



Joining 4jsecure Network with a Mac

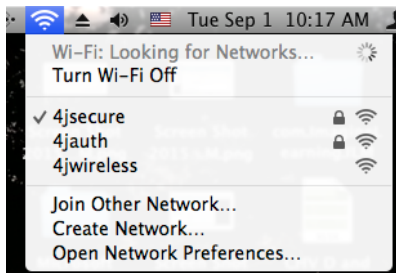
Joining 4jsecure wireless network

This is only to be used on staff computers, iPads, phones, etc. It is NOT for student use.

There are two main steps to switching to 4jsecure wireless.

Step 1:

- Click the Wifi icon to display the available wireless networks.
- Click on 4jsecure to select it.



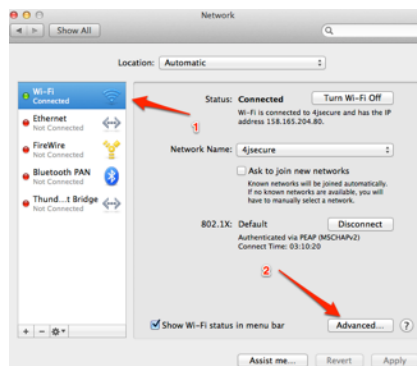
- A window pops open asking for your name and password. Enter your email name (without the @4j.lane.edu) and password.
- If you see a message about a certificate, click on "trust."
- Another window will pop up asking for permission to change the certificate. Enter the password you use to log onto your computer.
- You are now connected to 4jsecure and will not need to enter your user name and password again.

Step 2:

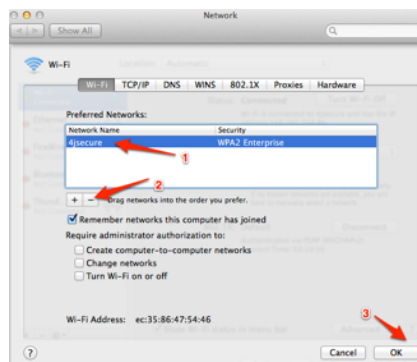
- Click on the black apple in the upper left corner of the screen.
- Select System Preferences.
- Click on Network.



- Click on Wifi (or Airport) and then click on Advanced.



- Drag 4jsecure to the top of the Preferred Networks list.
- Delete any other 4j network by clicking on the - sign.
- Delete any unneeded networks.
- Click on OK.



- Click on Apply
- Close System Preferences and you are done!

