

## Electron Dot Diagrams or Lewis Dot Structures

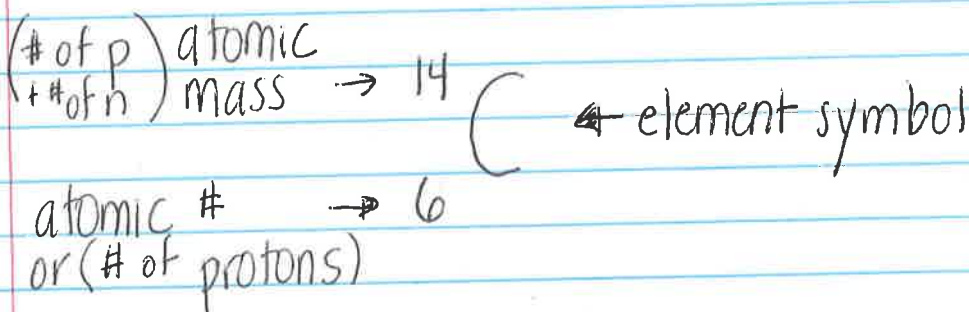
Use the element symbol and dots to represent valence electrons or electrons in the outer energy level.

Electron dot diagrams can have up to 8 electrons or 4 pairs surrounding the symbol.

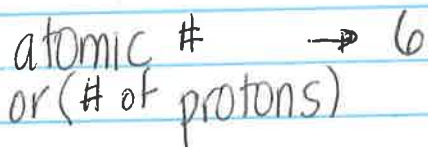


## Isotopes

Atoms of elements that have the same number of protons, but a different number of neutrons. Isotopes have different atomic masses.



← element symbol



Carbon - 14 ← atomic mass