

Natalie Schnoor

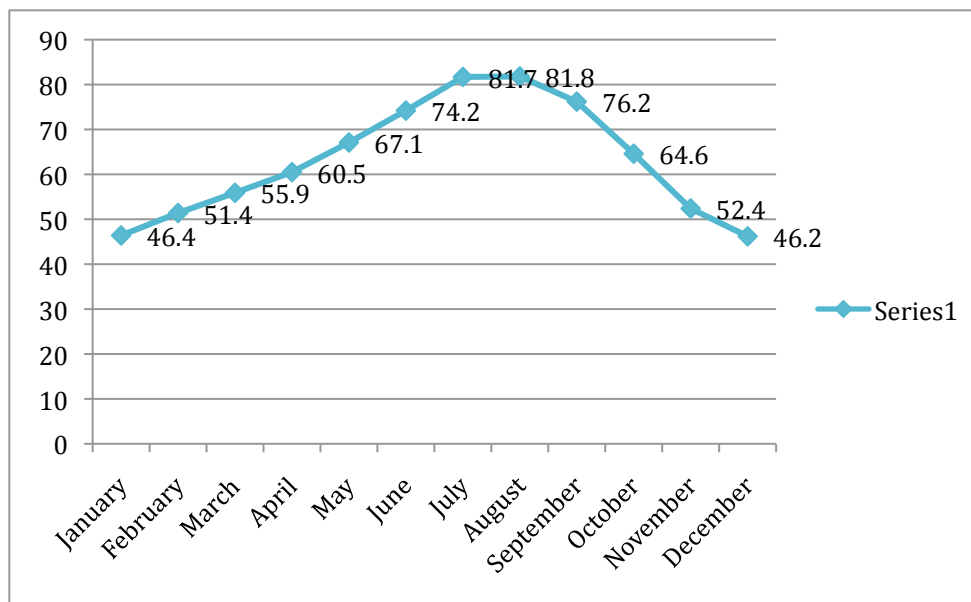
Tech Lit

Period 1

4.25.14

## Eugene's Normal Daily Maximum Temperature, 1961 – 1990

The graph below shows Eugene's normal temperatures in 1961 through 1990. I have chosen to show my data with a line graph.



From the data above I can tell that August was the warmest month. I can also tell that December was the coldest month.