

Scientific Models

A scientific model is...

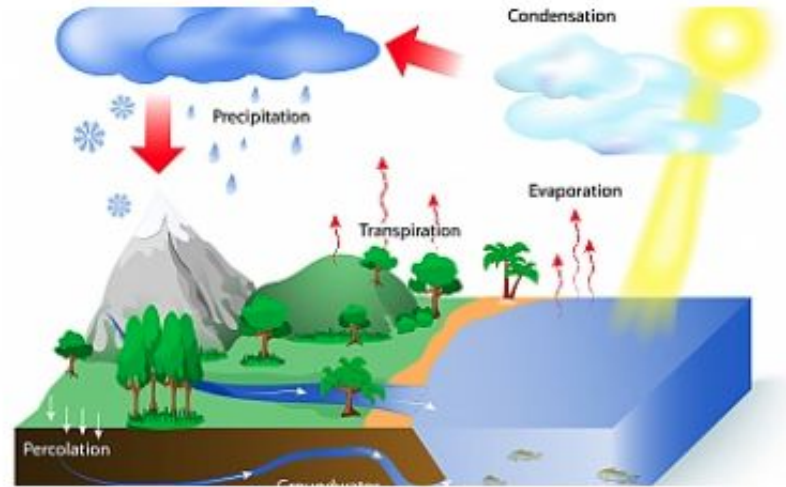
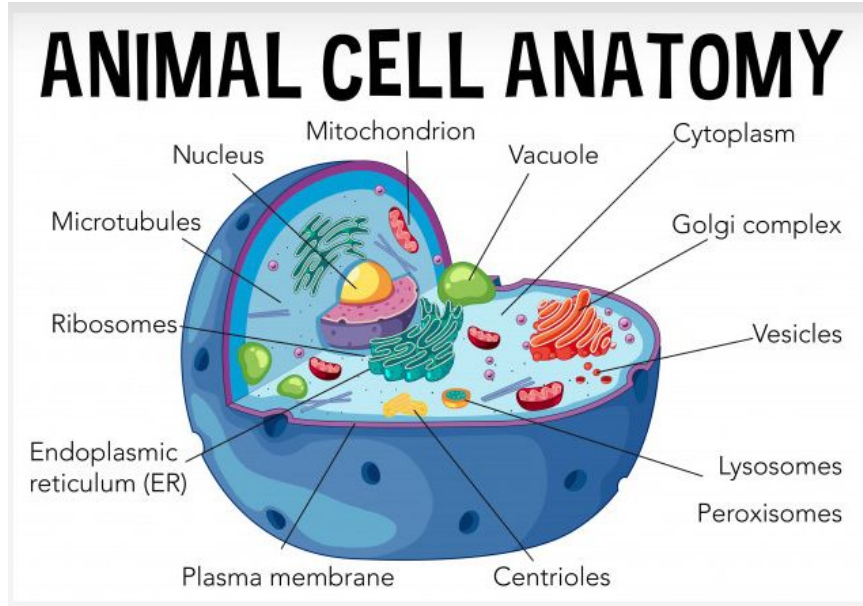
A representation of a particular
phenomena in the world

1. Help explain something
2. Study things that are too big or small
3. Used to make predictions and decisions

Visual Models
Physical Models
Computer Models

Models can **change** when new evidence is discovered. (Solar system, maps, new species...)

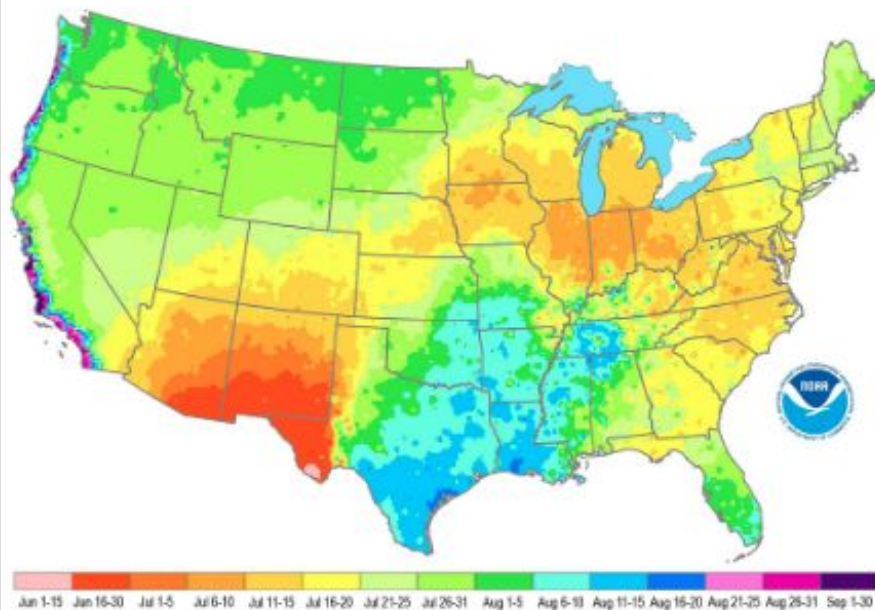
Examples



```
// alert("=php·echo·JT<br/}·<?php·}·?>  
<?php·if(·$this->item->typ  
$this->item->linkparts['op  
$this->item->linkparts['vi  
else·if(·document.getEleme  
> » alert("=php·echo·JT<br/}·<?php·}·?>  
<?php·if(·$this->item->typ
```

Warmest Day of the Year

Day of warmest high temperature based on 1981-2010 climate normals





Jupiter

Saturn

Uranus

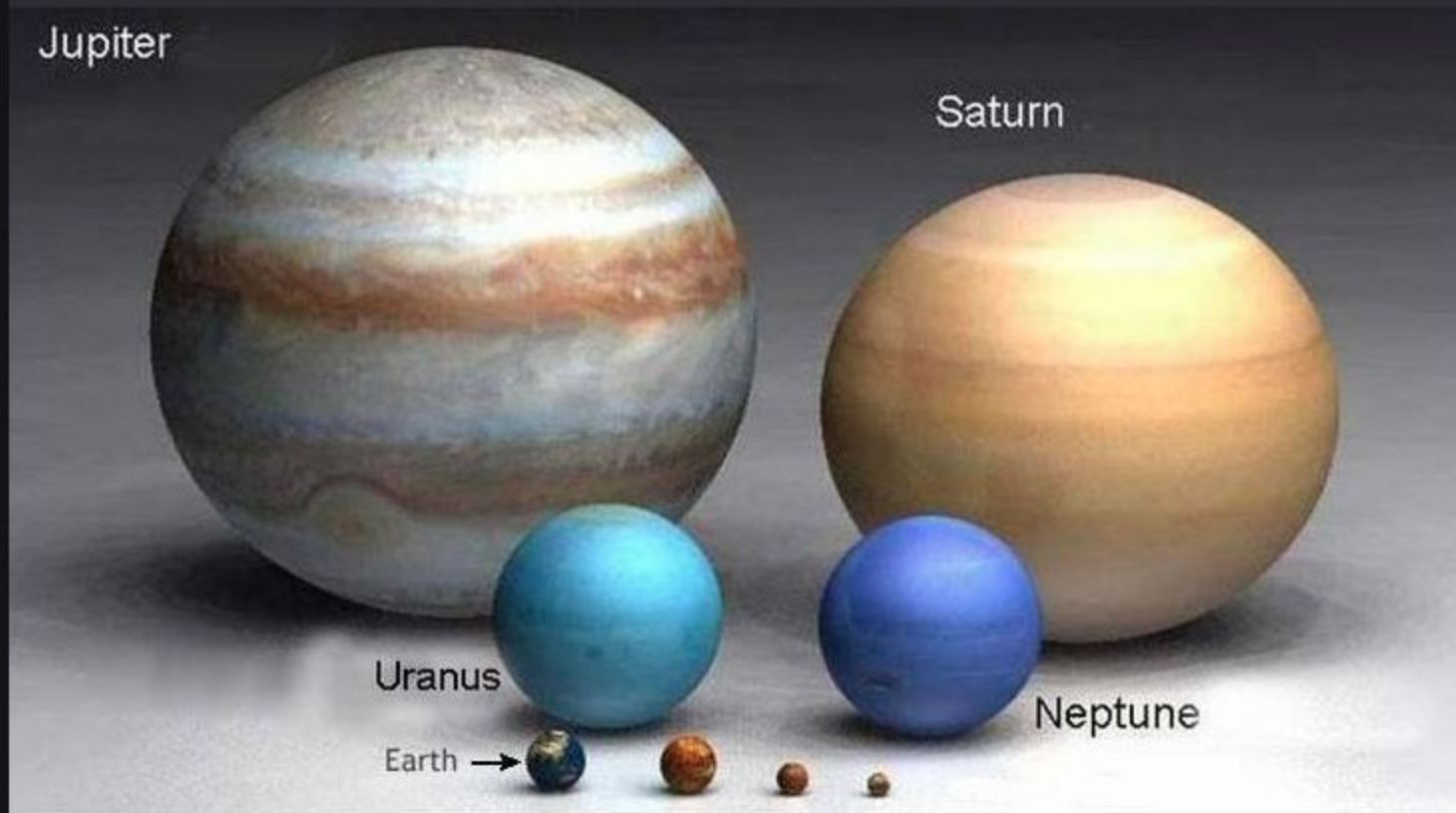
Neptune

Earth →

Venus

Mars

Mercury



Model Pretest:

*How does light interact with
the objects in the pictures?*





