

## Linear Perspective: Bedroom Design & Photoshop Basics

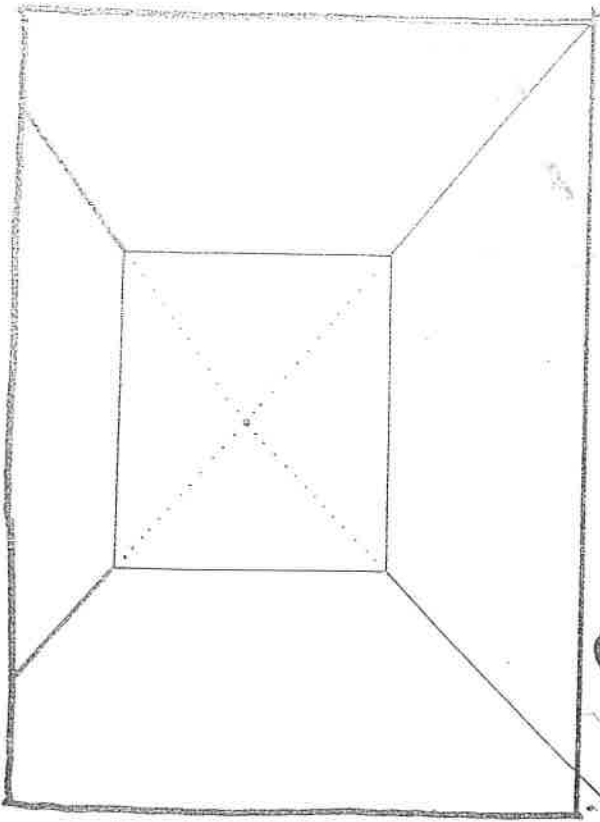
### **\*NEED: Bedroom Design Cardstock and Practice Paper**

- 1) On the back of the practice sheet, list items that you want in your bedroom.
- 2) Using a ruler & pencil start with items that are nearest or closest to you first. Draw the "face" of 3-Dimensional objects, then...
- 3) Using a ruler draw lines from your perspective point to the edges of the item you have drawn. Be sure that you are not drawing over the top of other shapes.

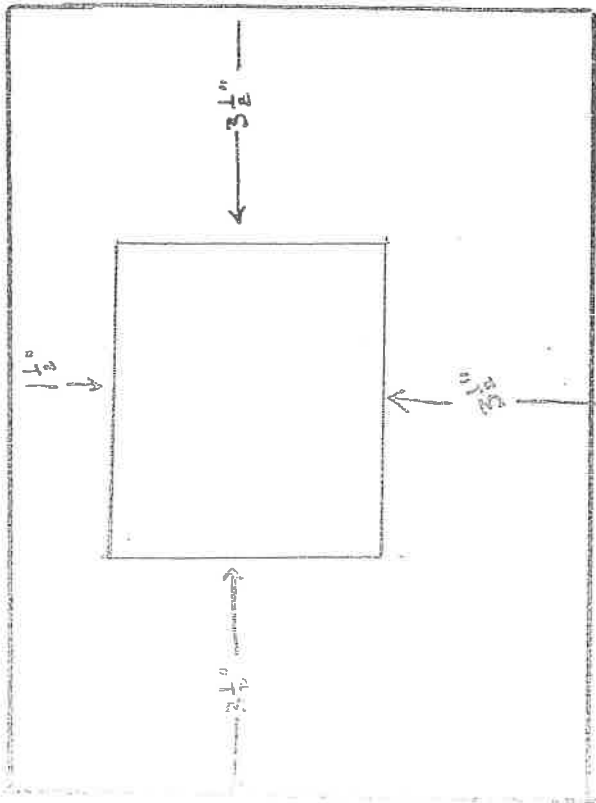
### **\*\*Now repeat ALL Steps Above on the piece of Cardstock**

- 4) You may add detail to your drawing, but be sure lines are "closed", so that you can color them in Photoshop.
- 5) Use a sharpie to make sure lines are crisp & closed.
- 6) Scan your drawing & Save to your Files1
- 7) "Place" Your scanned drawing into a new Photoshop assignment and finish designing your room using pictures from the internet, filters, and paint bucket.
- 8) Save as a PDF when finished and upload to a "page" on your Blog
- 9) Sign up to have your Blog checked: Grading for 1 Point Perspective, PS Collage Biography, and PS Room

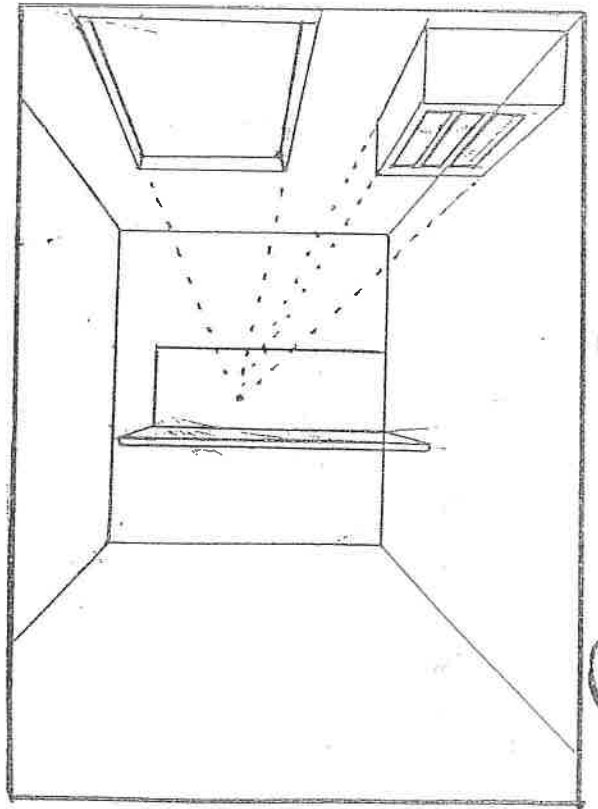
### **\*\*Neatness Counts**



2



1



3