

Ch 11-5: Gene Linkage

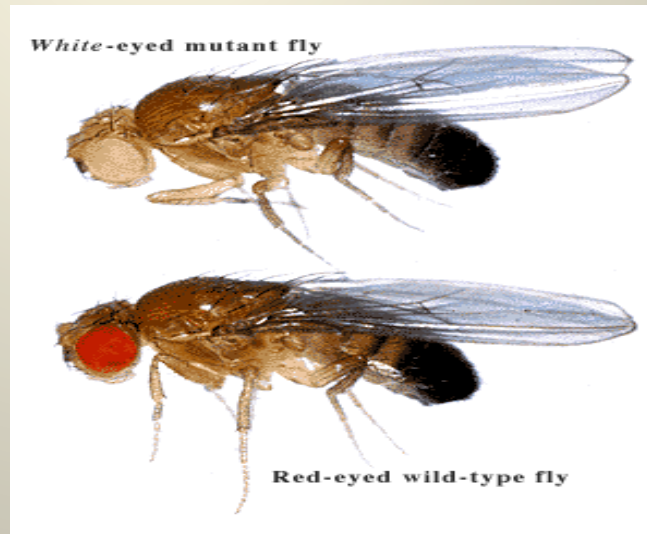
Essential Question:

- What are *gene maps* and *gene linkage*?

Linkage and Gene Maps

Gene linkage

- Mendel: genes assort independently in meiosis
- Morgan (1910):
 - chromos. are a group of linked genes
 - genes on same chromos. tend to be inherited together



– **Chromosomes** assort independently, NOT individual genes.

- Gene Maps

- Are genes on same chromos. always linked?

- No

- Greater dist. between genes on chromos., more likely that they will separate.

