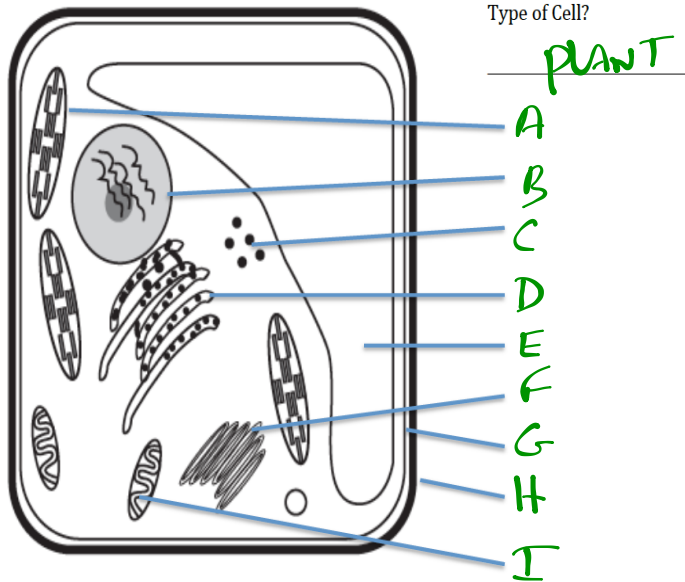


Type of Cell?

ANIMAL

	Structure	Function (4 words or less)
A	LYSOSOME	DIGESTS FOOD + WASTE
B	E.R. - ROUGH	TRANSPORTS MOLECULES
C	GOLGI APPARATUS	PACKAGES + MODIFIES PROTEINS
D	CELL MEMBRANE	CONTROLS WHAT GOES IN/OUT
E	NUCLEUS	CONTROLS CELL
F	RIBOSOMES	PROTEINS ASSEMBLED
G	CYTOPLASM	HOLDS ORGANELLS + GIVE SHAPE
H	MITOCHONDRIA	FOOD CONVERTED → ENERGY



	Structure	Function (4 words or less)
A	CHLOROPLAST	converts light → food
B	NUCLEUS	" "
C	RIBOSOMES	" "
D	E.R. - Rough	" "
E	VACUOLE	stores H ₂ O + nutrients
F	GOLGI APPARATUS	" "
G	CELL MEMBRANE	" "
H	CELL WALL	GIVES STRUCTURE + PROTECTION
I	MITOCHONDRIA	" "