

Ch. 14: Human Heredity

Essential questions:

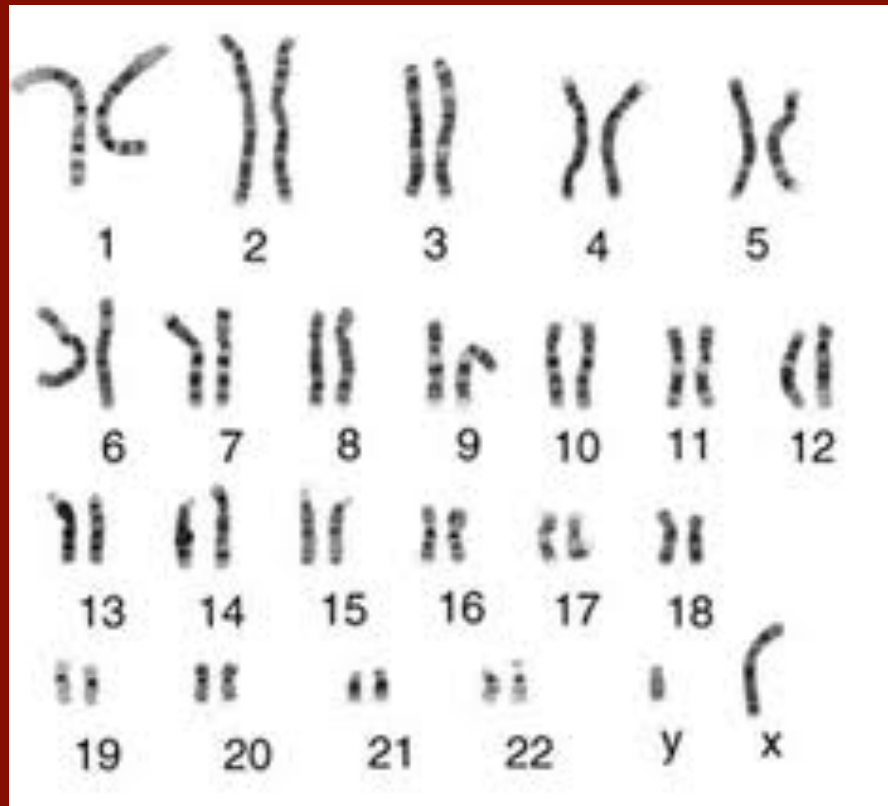
- How is blood type inherited?
- What is a ***sex-linked trait***?
 - Why are sex-linked disorders more common in males?
- What is ***non-disjunction***, and what problems it can cause?

Chapter 14–1: Human Heredity

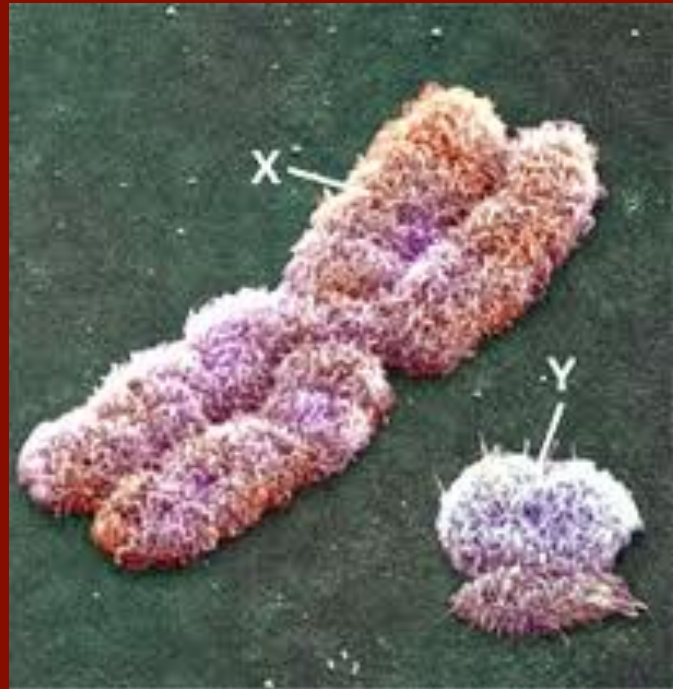
Essential questions:

- What is a *karyotype*?
- What are *autosomes* and *sex chromosomes*?
- How is blood type inherited?

- Human Chromosomes
 - karyotype

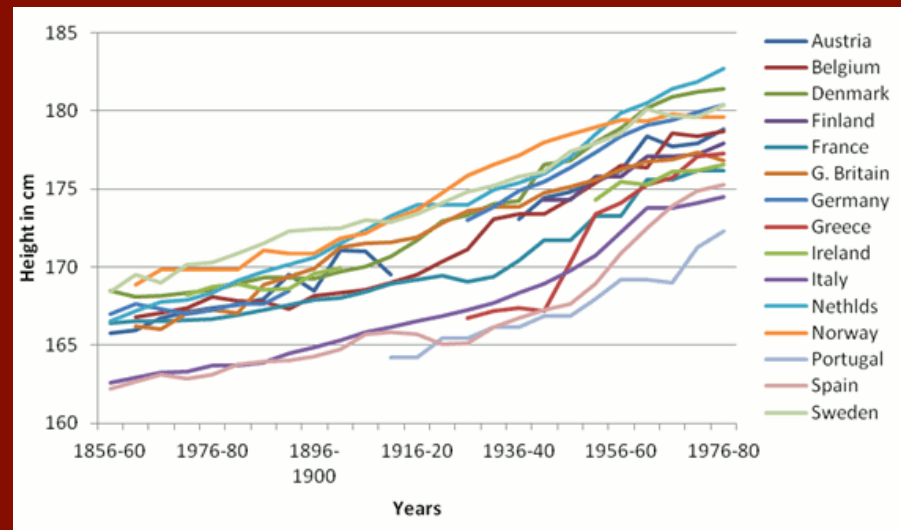
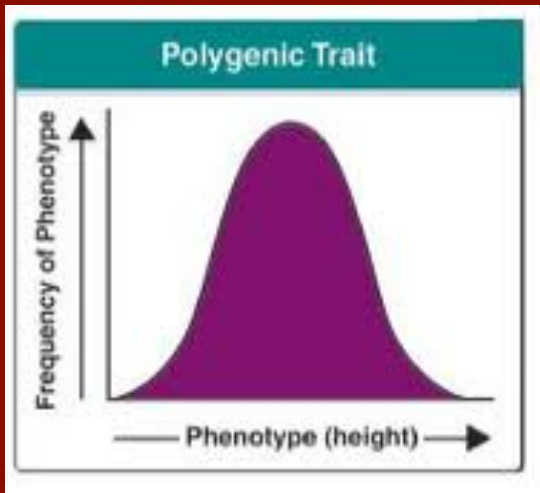


- sex chromosomes – XX or XY
- Autosomal chromosomes – non-sex chromosomes



■ Human traits

- Most polygenic
- many traits influenced by environment
 - Ex: height & nutrition



■ Human Genes

– Blood Group Genes

- Rh group – + dominant, - recess.

- ABO group

– 3 alleles I_A I_B i

- first 2 are codominant
- $I_A I_B$ = type AB
- $I_A I_A$ or $I_A i$ = type A
- $I_B I_B$ or $I_B i$ = type B
- ii = type O
- Universal donor – Type O
- Universal recipient – Type AB