

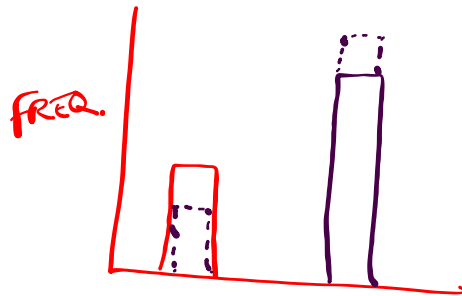
ARTIFICIAL SELECTION -
HUMANS PICK DESIRABLE TRAITS
- CHANGES ORGANISM

SPECIATION - NEW SPECIES FROM EXISTING SP.
REQUIREMENT -

REPRODUCTIVE ISOLATION

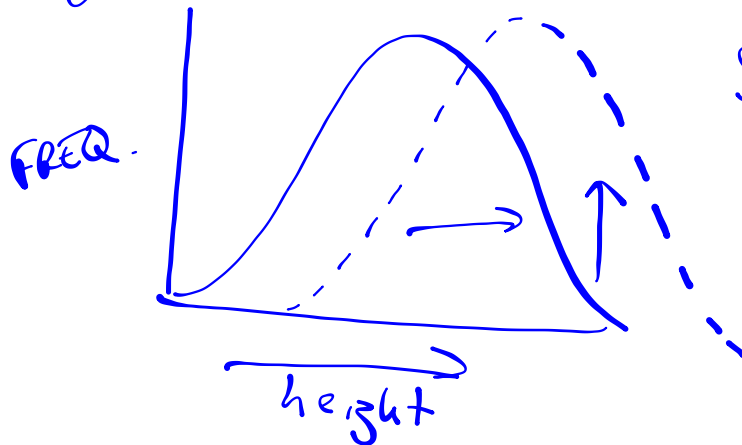
1. BEHAVIORAL
2. GEOGRAPHIC
3. TEMPORAL (Timing)

Single-gene trait: 2 phenotypes

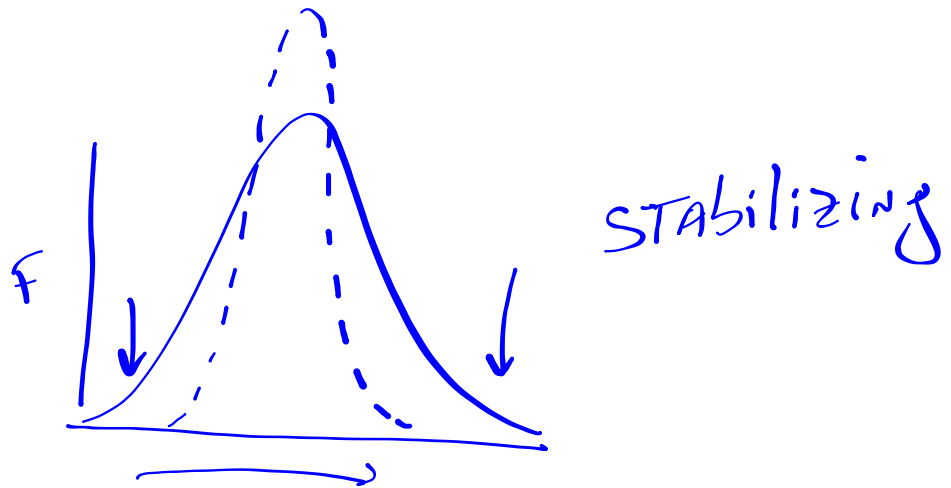


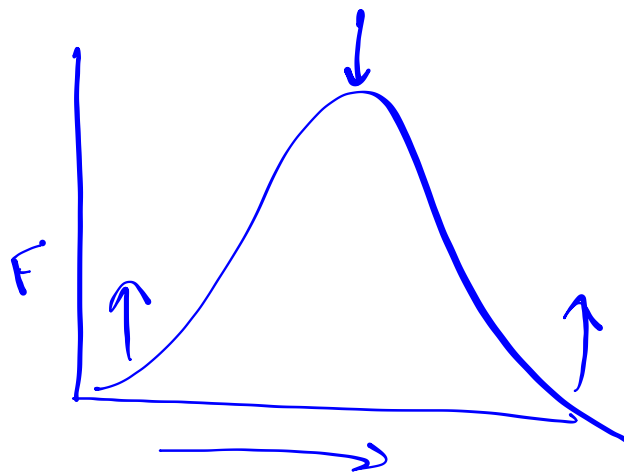
SELECTION CAN CHANGE FREQS.

polygenic traits - 1000's of phenotypes



Selection:
1. DIRECTIONAL





DISRUPTIVE
SEL.

GENETIC DRIFT:
RANDOM CHANCE
- Small pops.