

1. Geologists - Hutton + Lyell
  - 1. Earth changing
  - 2. Earth very old
2. Lamarck - evolution of life
  - Inheritance of acquired traits
3. Malthus - pop. control

Speciation = new species from existing

- Requirement:

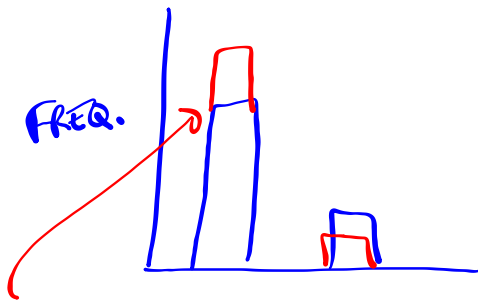
REPRODUCTIVE ISOLATION

- BEHAVIORAL

- TEMPORAL (time)

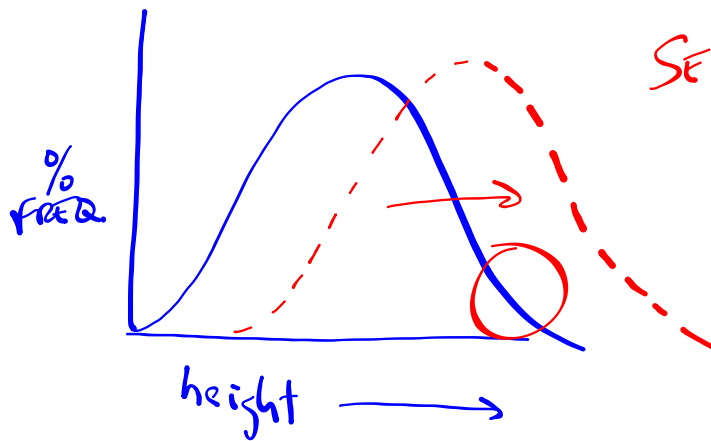
- GEOGRAPHIC

Single-gene traits - 2 phenotypes

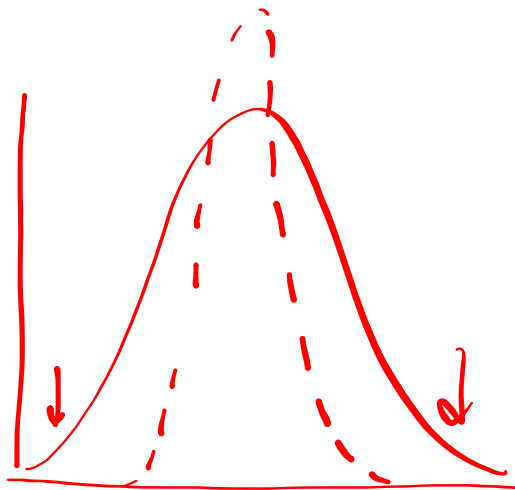


selection can lead to changes

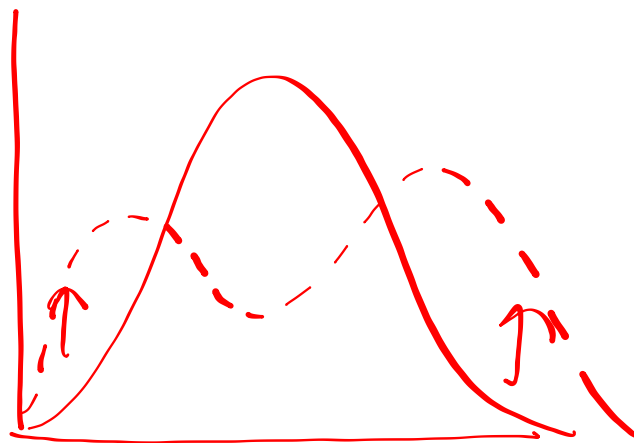
Polygenic traits - 1000's of phenotypes



SELECTION:  
- DIRECTIONAL



STABILIZING  
SEL.



DISRUPTIVE  
SEL.