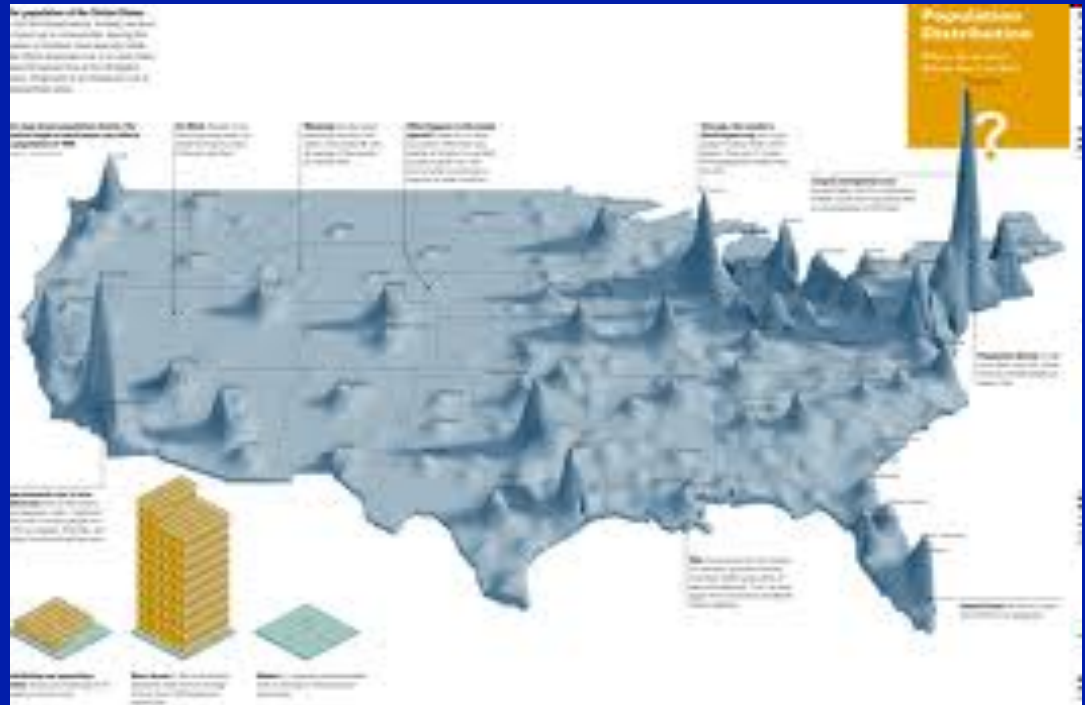


Chapter 5-1: How Populations Grow

Essential Questions:

- What are characteristics used to describe a population?
- What are factors that affect population size?
- What is exponential and logistic growth of populations?

- Characteristics of Populations
 - Geographic distribution
 - Density
 - Growth rate

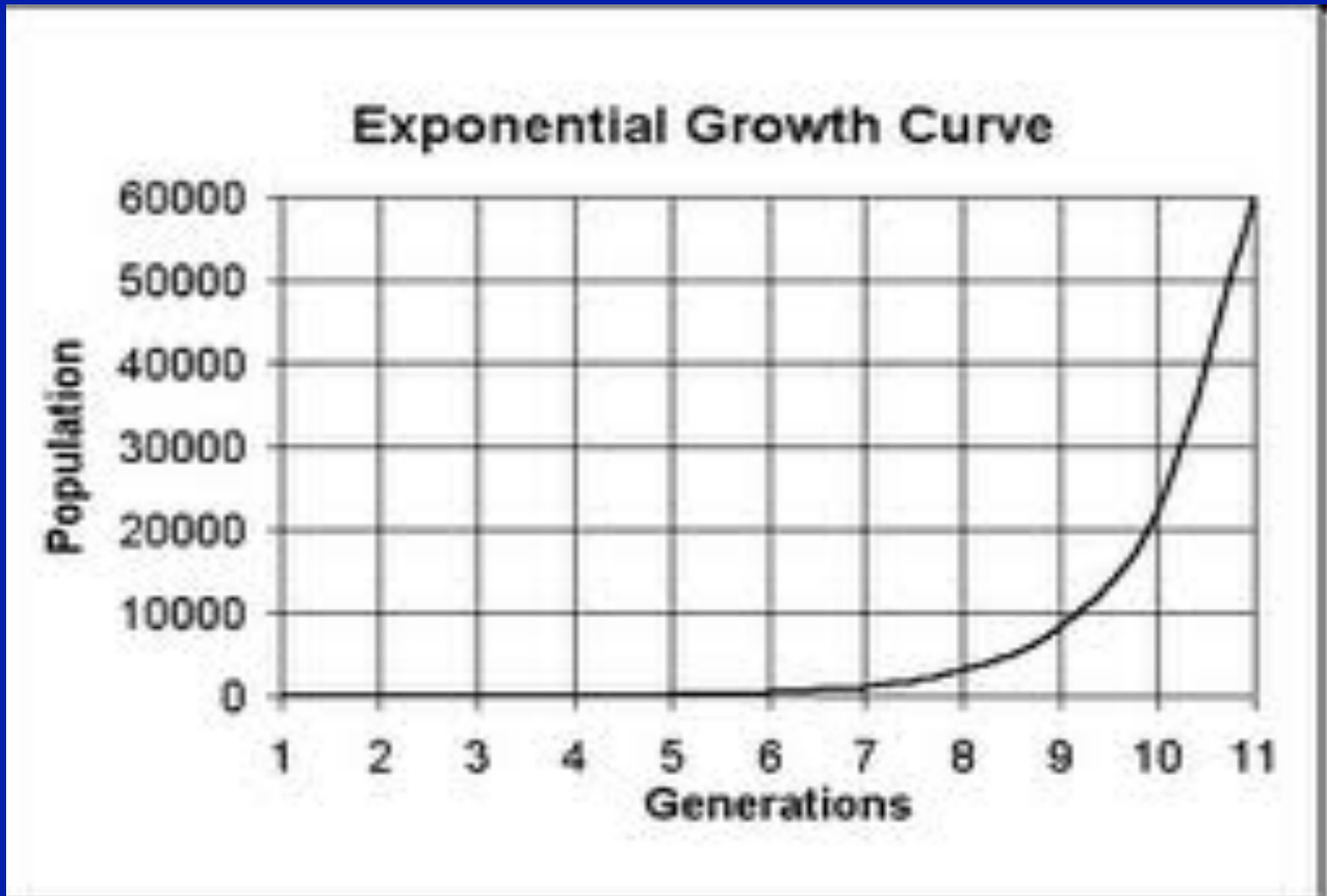


– Population Growth

- 3 factors that affect growth
 - # of births
 - # of deaths
 - # entering or leaving
 - Immigration
 - Emigration

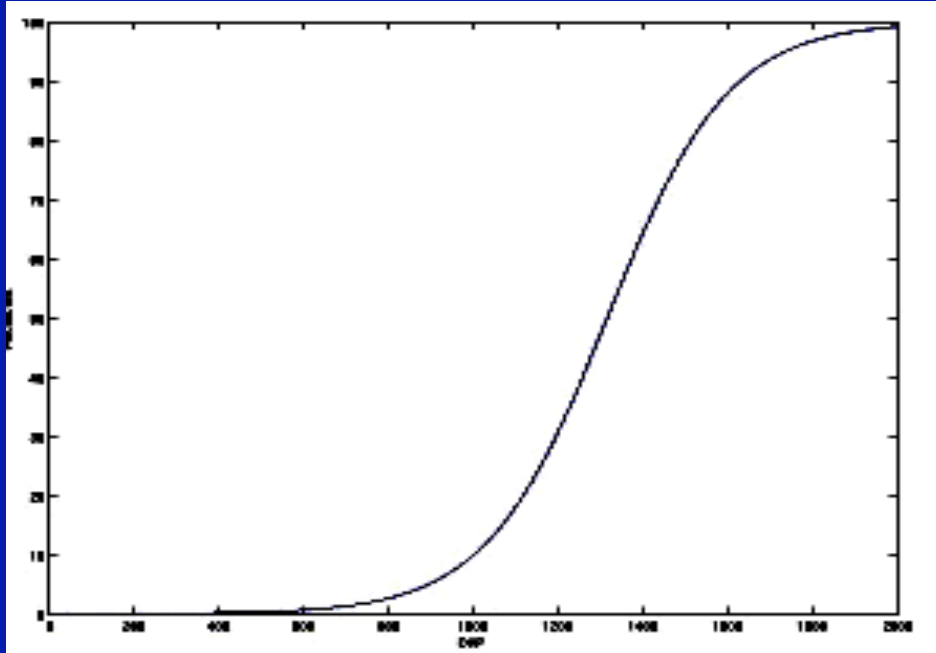


- Exponential Growth
 - “J-curve”



– Logistic Growth

- “S-curve”



- What slows or stops growth?
- Carrying capacity