

# Chapter 26-1: Introduction to the Animal Kingdom

## Essential Questions:

- What characteristics do all animals share?
- What essential functions do all animals carry out?
- What are important trends in animal evolution?

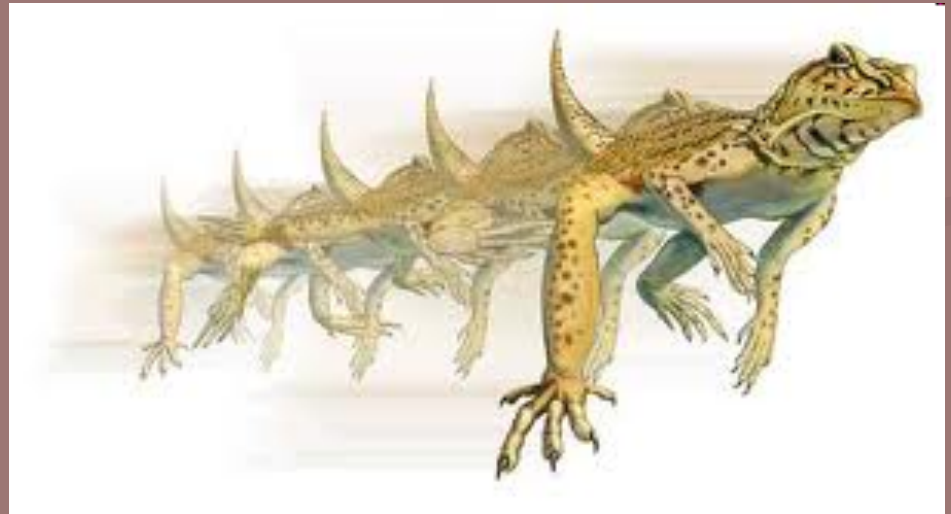
■ What is an animal?



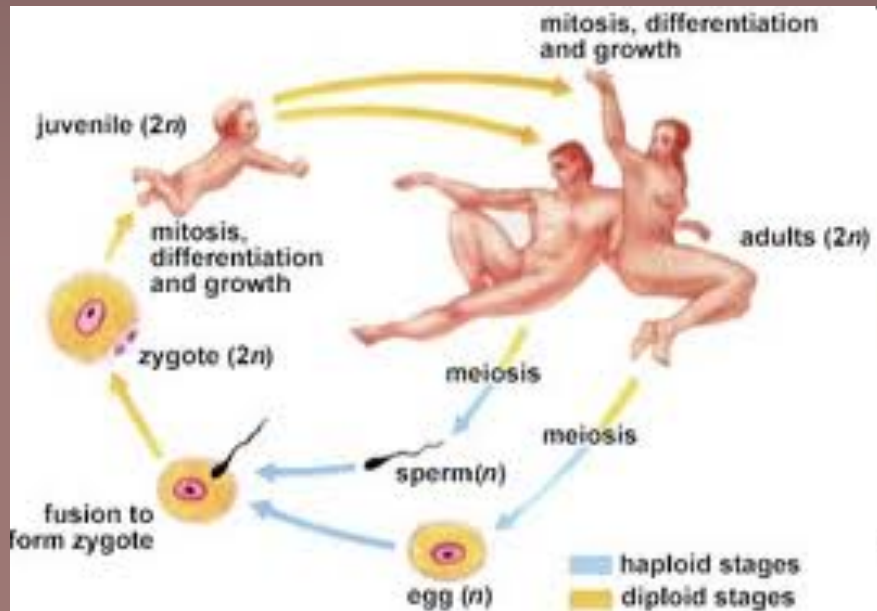
- What animals do to survive
  - Feeding
  - Respiration & circulation



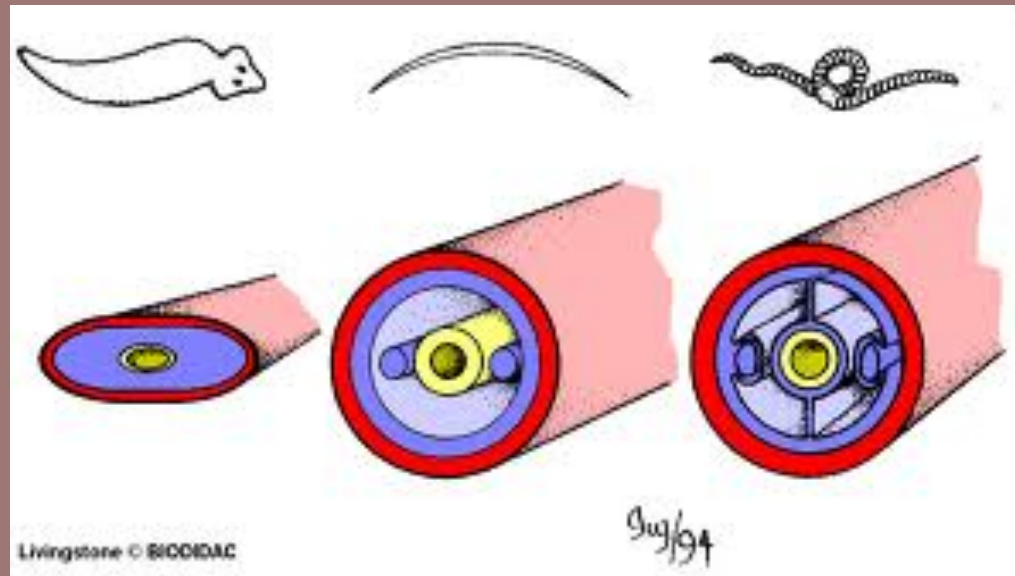
- Excretion
- Response



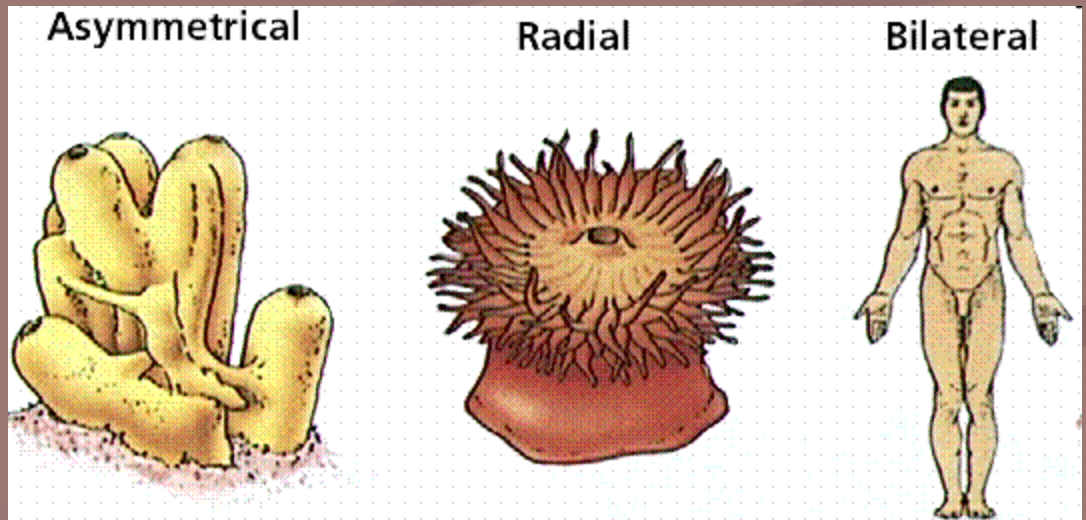
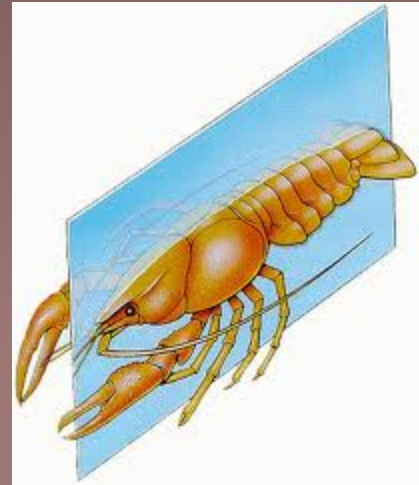
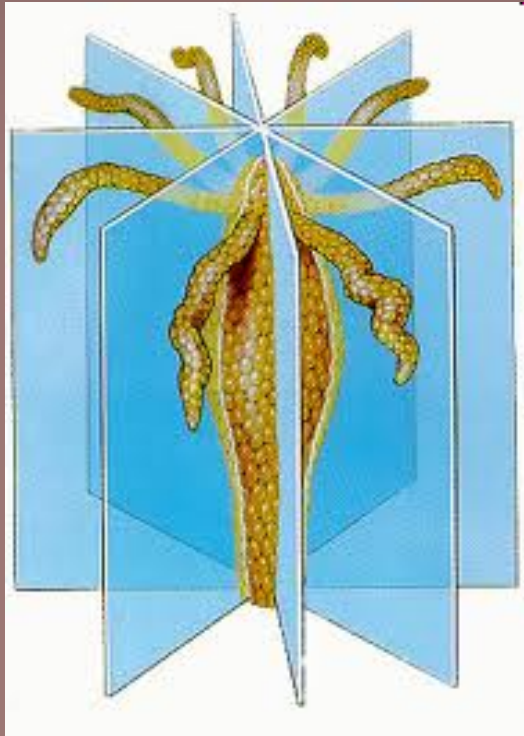
# ■ Reproduction



- Trends in animal evolution
  - Cell specialization & levels of organization
  - Early development-embryos differentiate into 3 layers



- Body symmetry
  - Radial or bilateral



- Cephalization
- Body cavity formation

