

Chapter 22-1: Introduction to Plants

Essential Questions:

- What is a *plant*?
- What do plants need to survive?
- How did the first plants evolve?

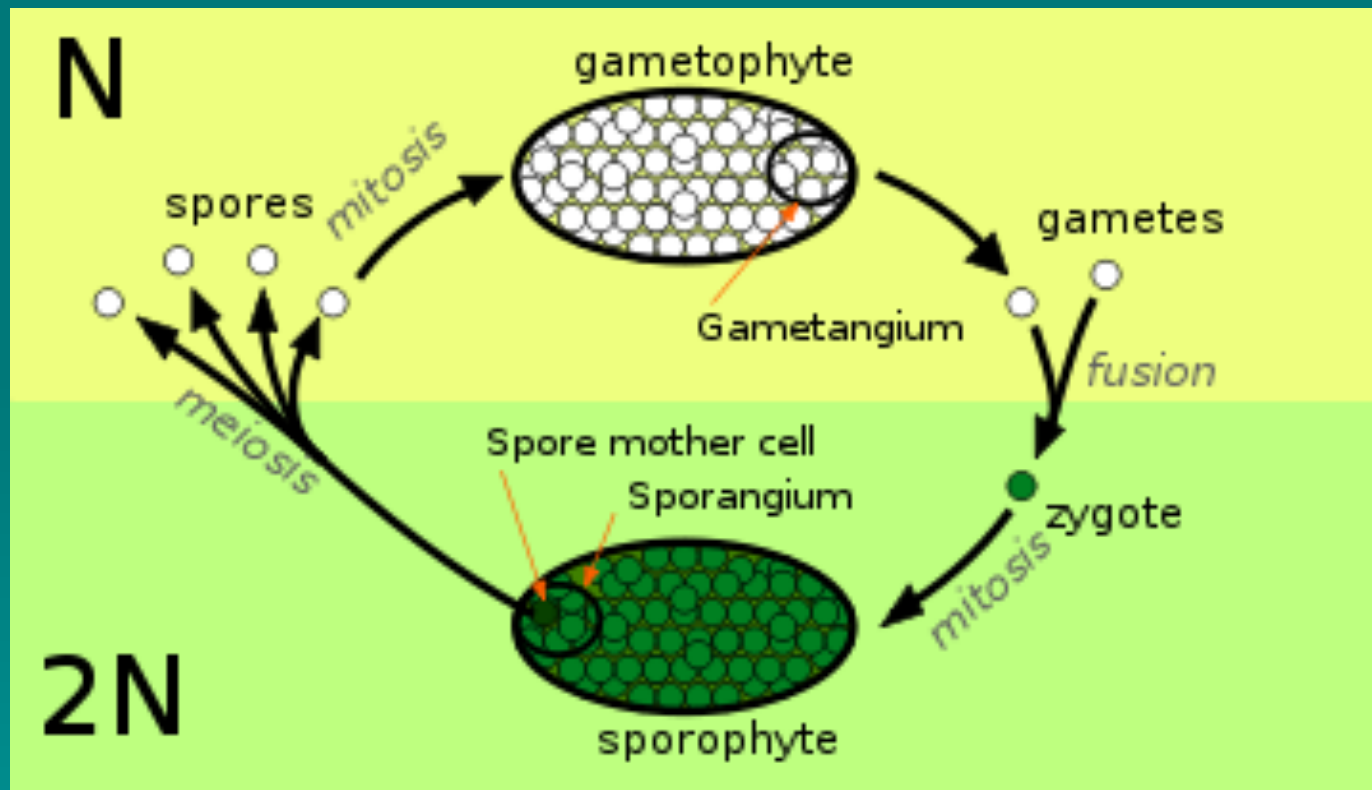


- What is a plant?
 - Multicellular
 - Eukaryote
 - Autotroph



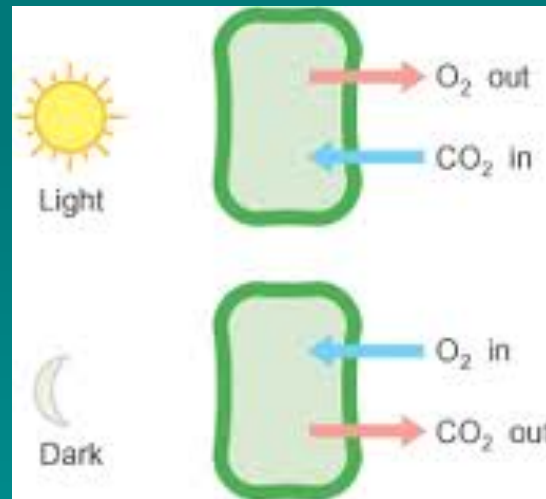
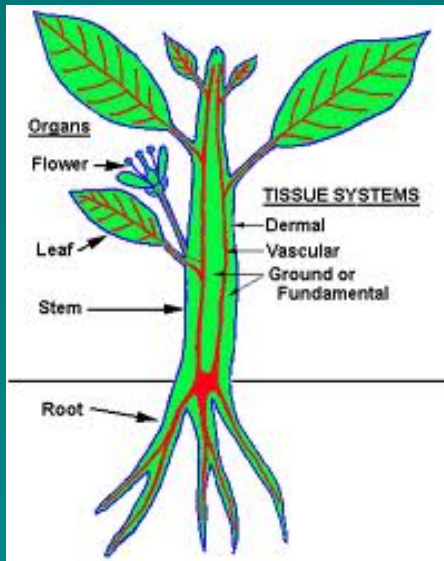
➤ Plant life cycle

- Alternation of generations
- Seeds



➤ What plants need to survive

- Sunlight
- Water & minerals
- Gas exchange
- Movement of water & nutrients



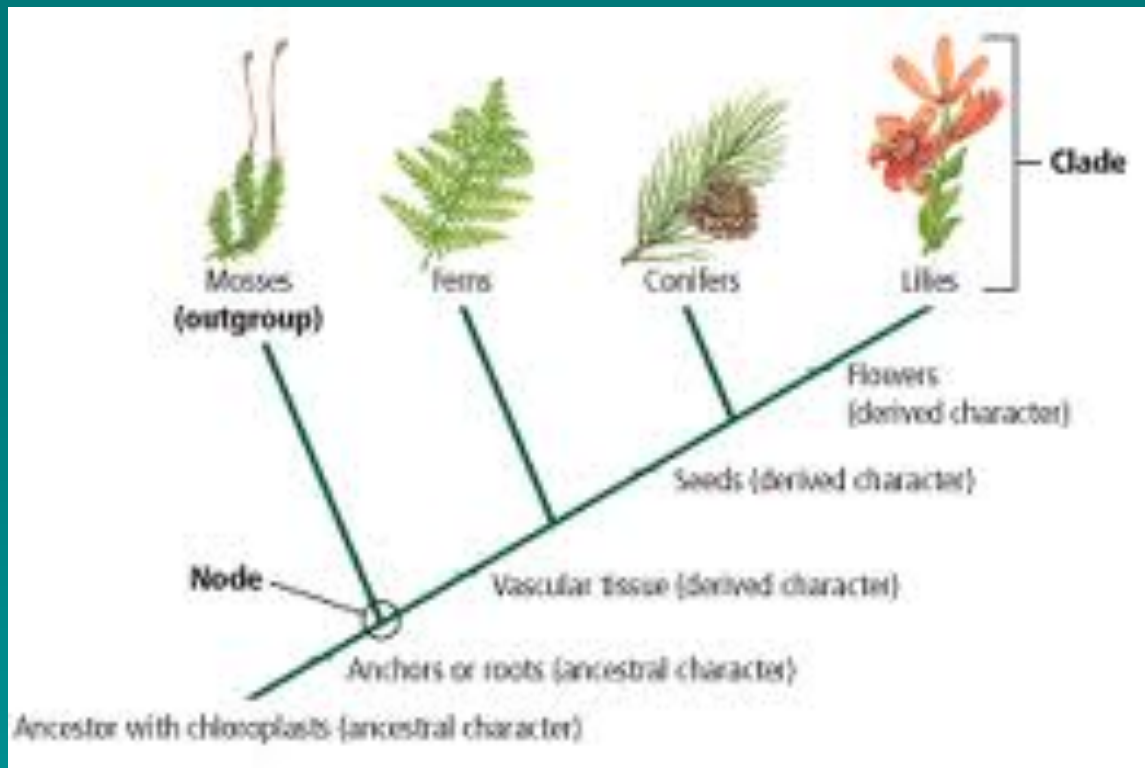
➤ Early plants

- Origins in water
- First plants



➤ Evolution of plant kingdom

- Vascular tissue
- Seeds
 - Cone-bearing
 - Flowering



➤ Overview of plant kingdom

- Most plants alive now: flowering
- DNA evidence
 - plants evolved from fresh water algae, not sea water

