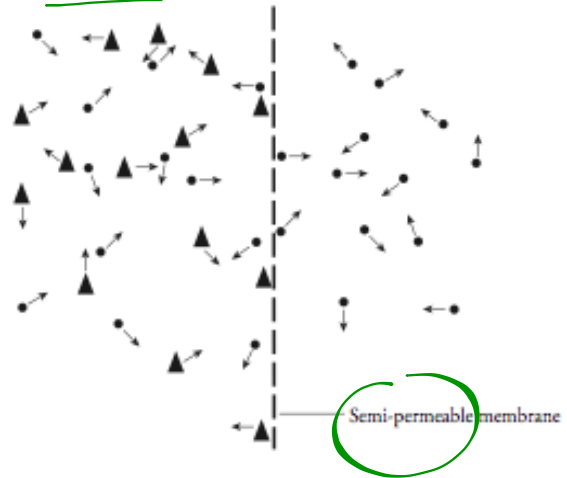
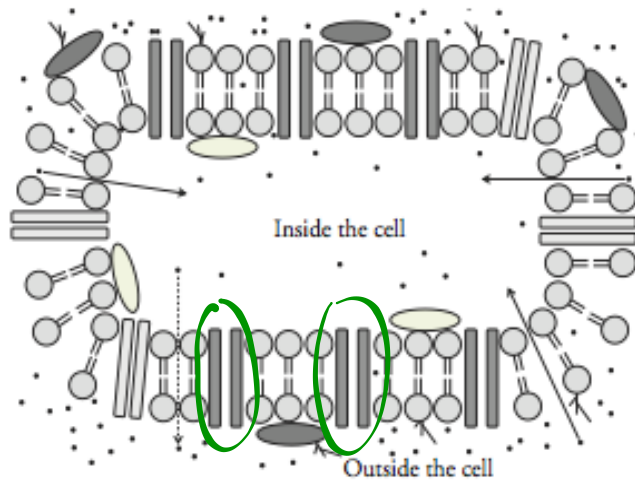
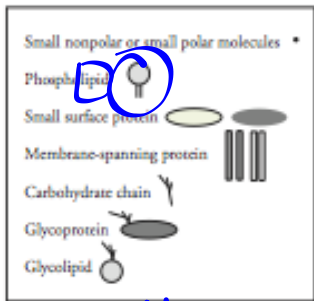


Model 1 – Simple Diffusion



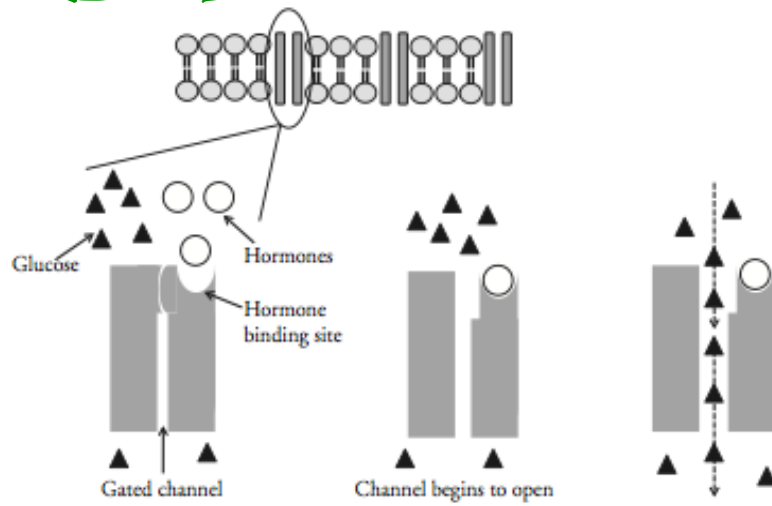
Model 2 – The Selectively Permeable Cell Membrane



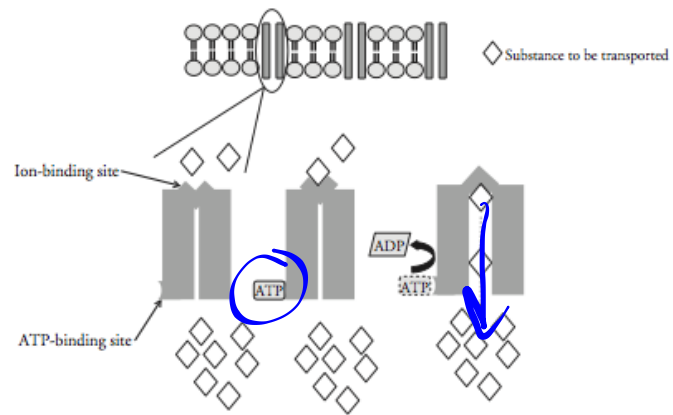
polar → H_2O
non-polar →



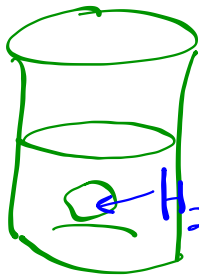
Model 3 – Facilitated Diffusion



Model 4 – Active Transport

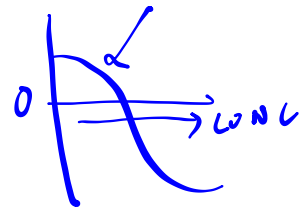


Diffusion of H_2O - Osmosis



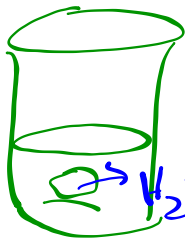
H_2O MOVES
in -
cell gains mass

conc. of solute
is lower outside
the cell than in -
Hypotonic

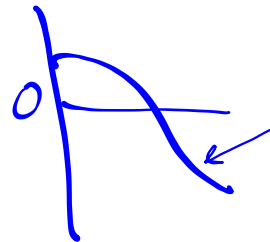


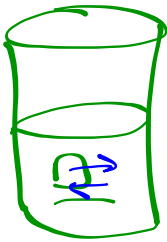
sol. conc. outside cell
is higher than inside

- **Hyper**tonic



H₂O moves out
- cell loses mass





Sol. conc. in/out is EQUAL

ISOTONIC

no change in mass

