

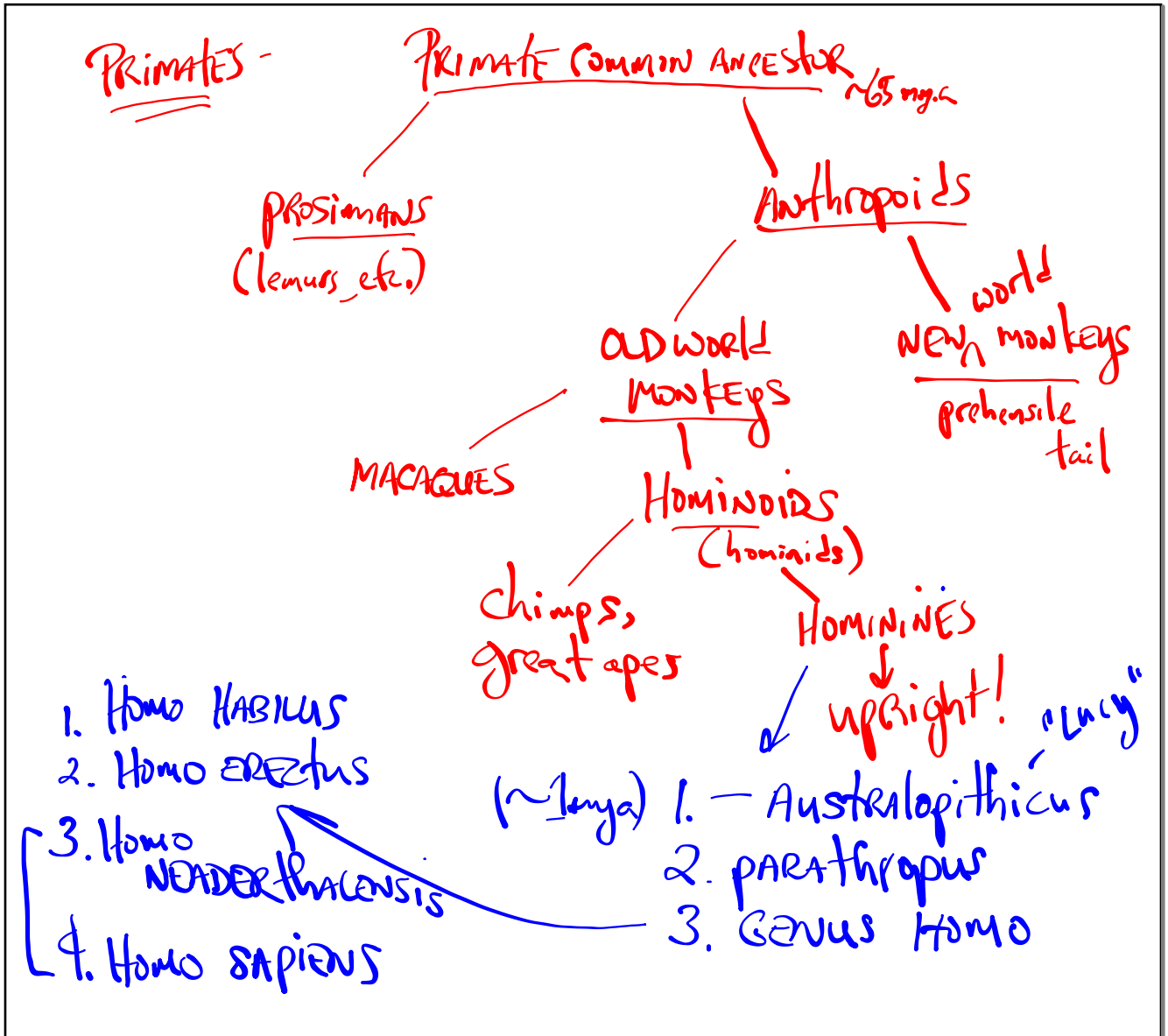
## Evolution TEST REVIEW

PLEASE GET OUT

2 "what to know" HANDOUTS

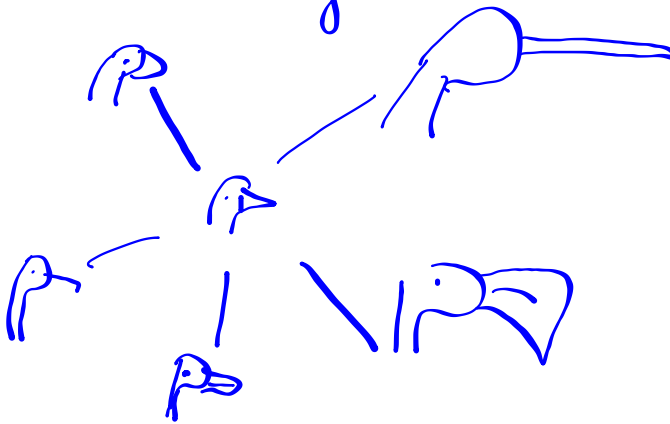
1. ch. 15 + 16

2. ch. 17 + 32-3



# ADAPTIVE RADIATION

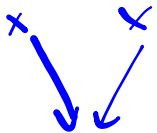
- 1 SPECIES EVOLVES INTO SEVERAL  
DIFF. SPECIES THAT LIVE IN DIFFERENT  
WAYS



CONVERGENT EVOL. - 2 not closely related

SPECIES COME TO RESEMBLE EA. OTHER

b/c they evolve in similar environments



SHARKS + DOLPHINS

## Coevolution -

2 SPECIES EVOLVE IN RESPONSE TO  
CHANGES IN EA. OTHER

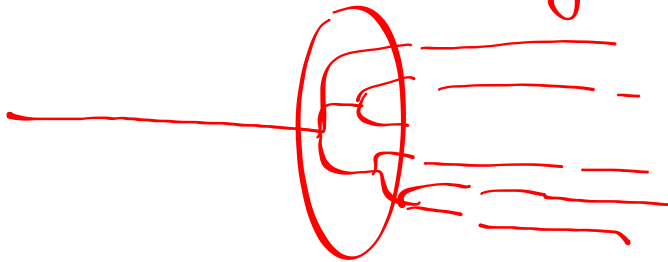
Ex. flowering plants + pollinating animals

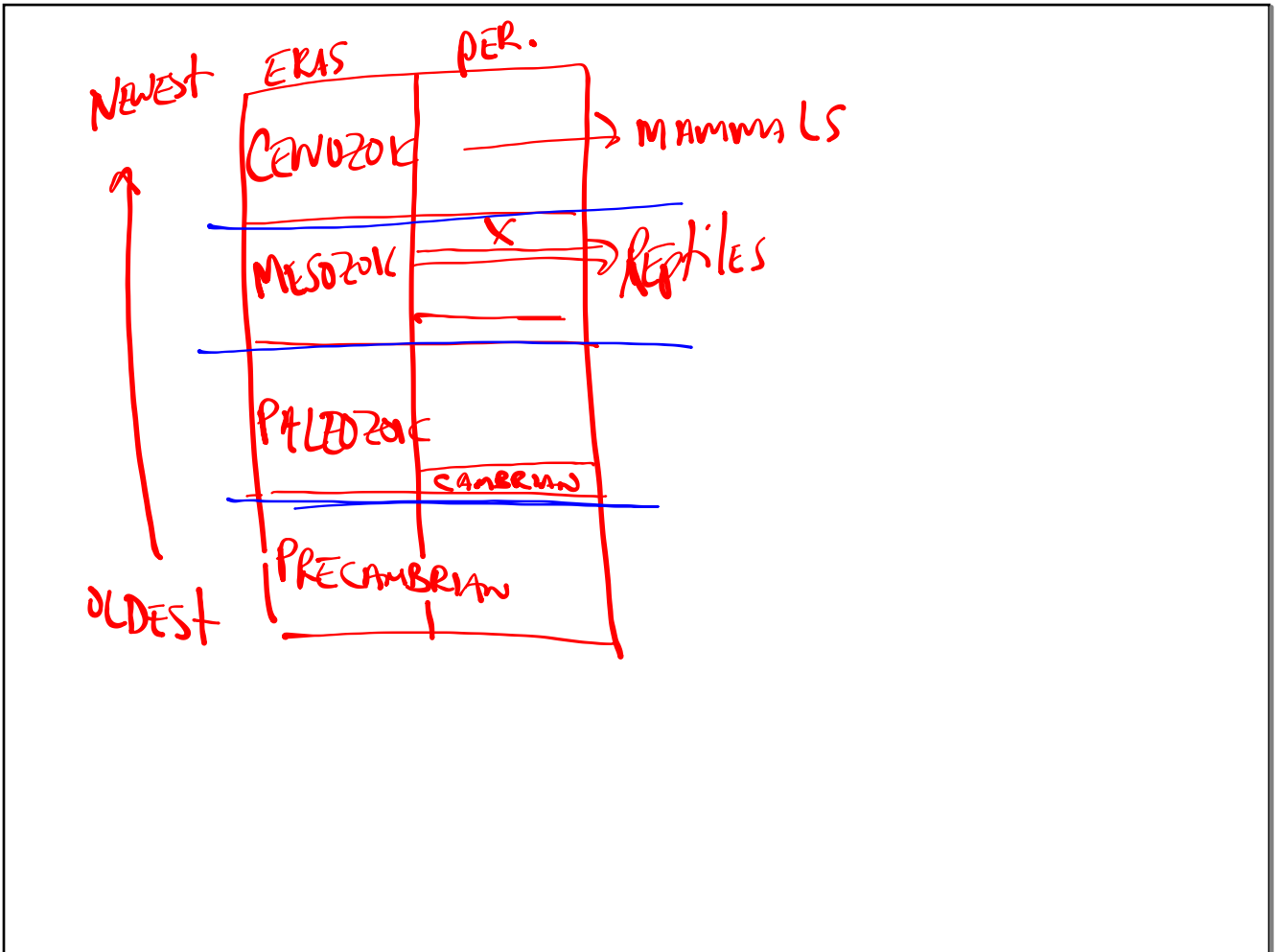


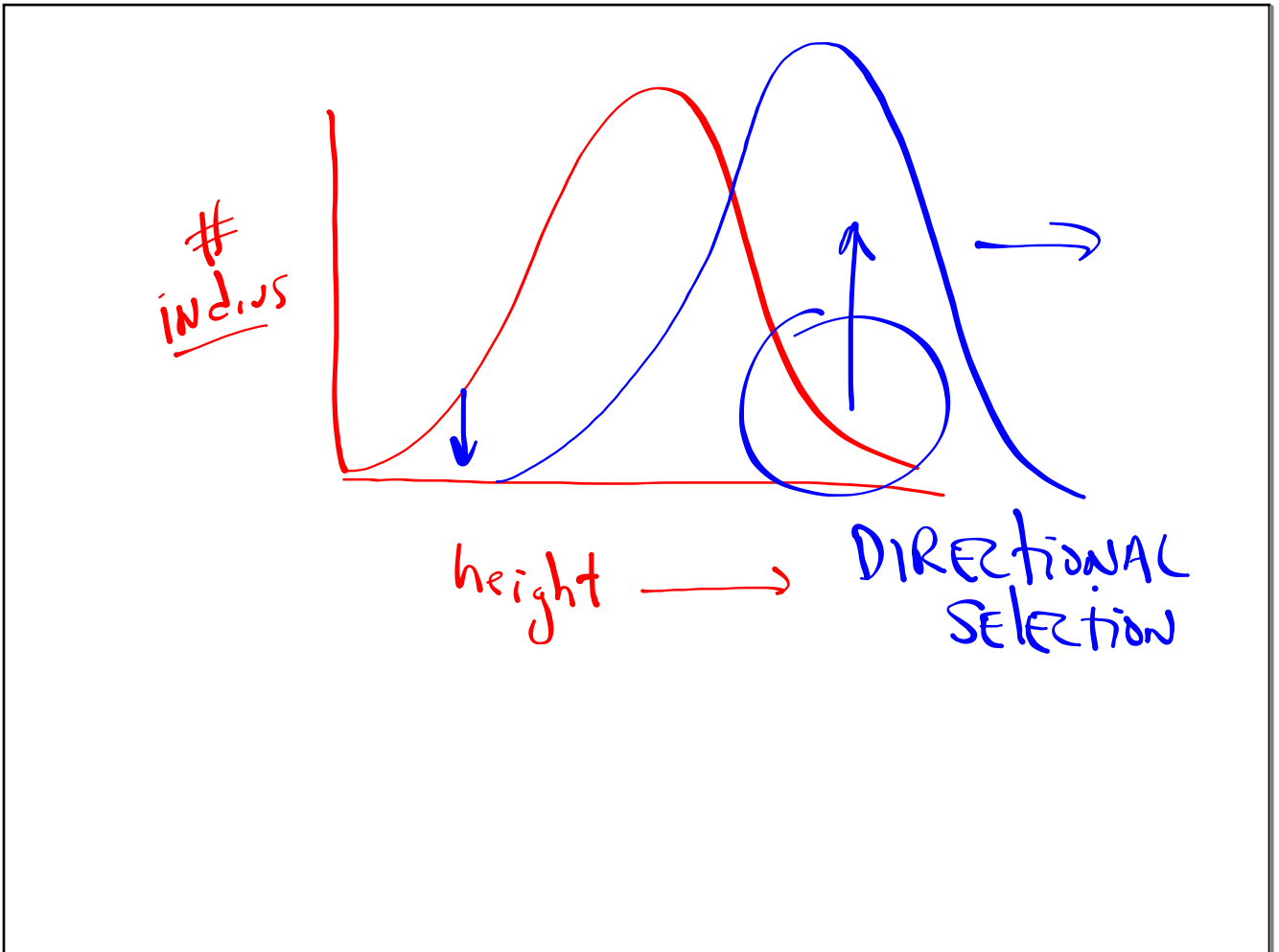
PUNCTATED EQUILIBRIUM -

- DARWIN - GRADUALISM X

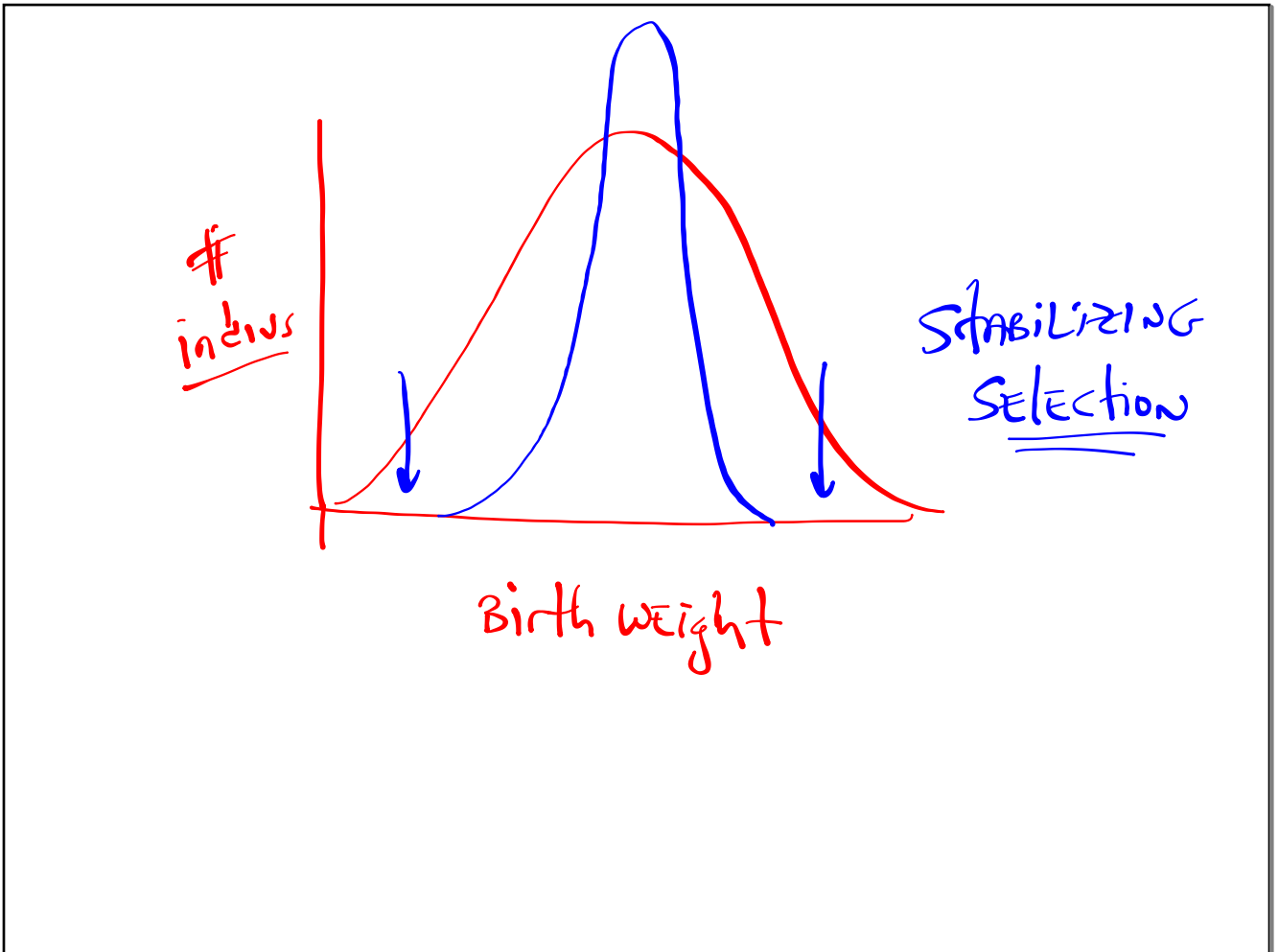
→ Long periods of stability  
punctuated by burst of evolution

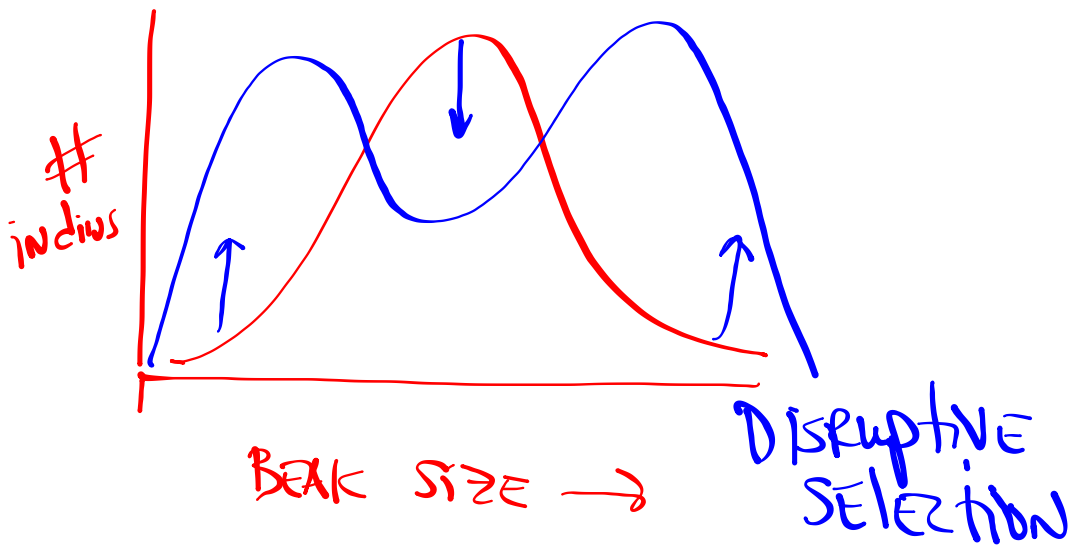












GENETIC DRIFT - IN SMALL POPS,  
CHANGE IN ALLELE FREQUENCIES DUE RANDOM  
CHANGE

FOUNDER EFFECT -

WHEN SOME INDIVS LEAVE TO FORM  
NEW POP, SOME ALLELES MAY  
BE MORE OR LESS REPRESENTED.