

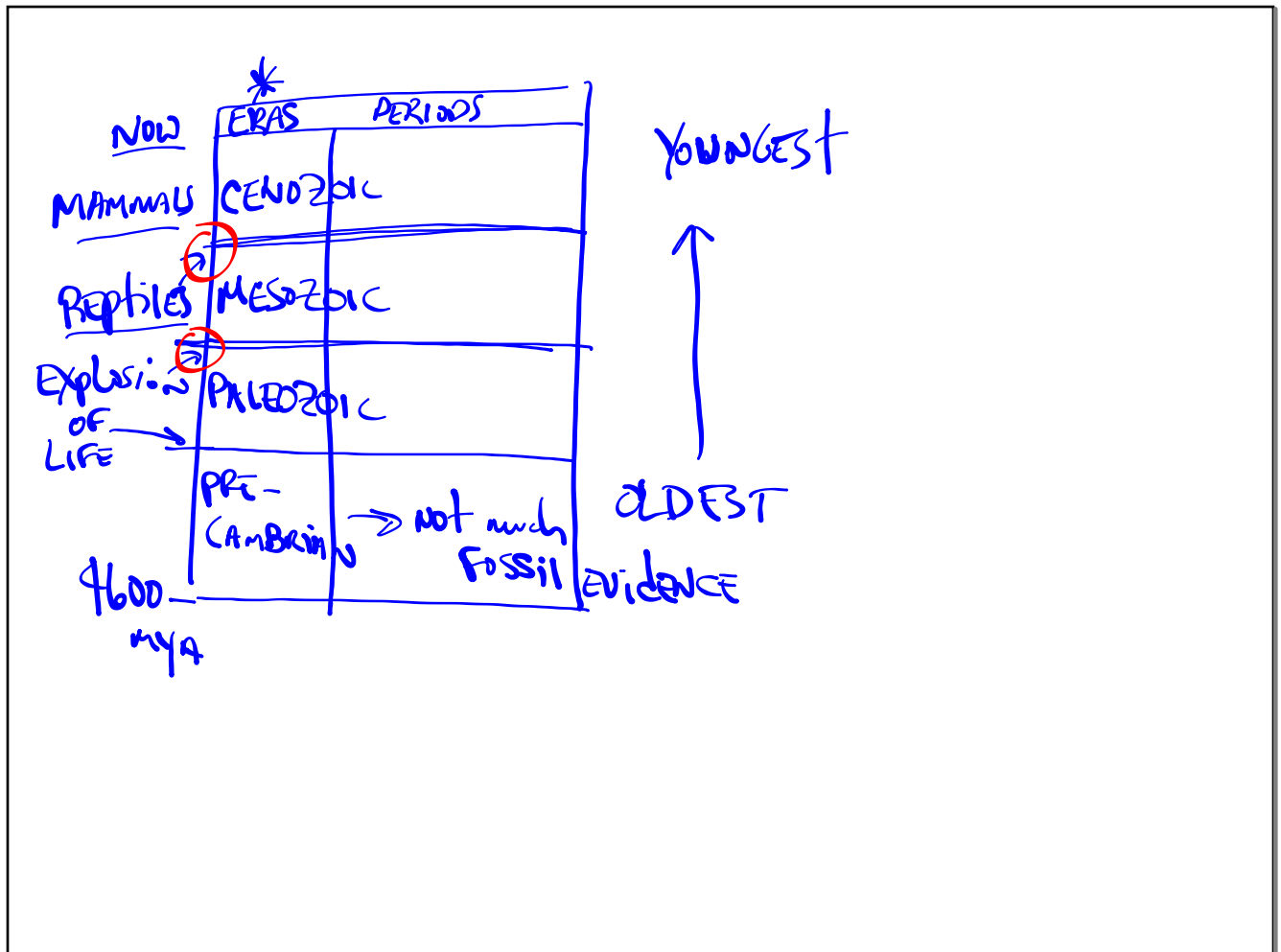
Evolution TEST REVIEW

PLEASE GET OUT

2 "what to know" HANDOUTS

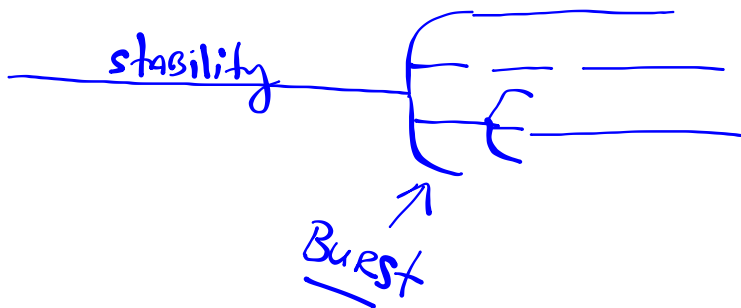
1. ch. 15 + 16

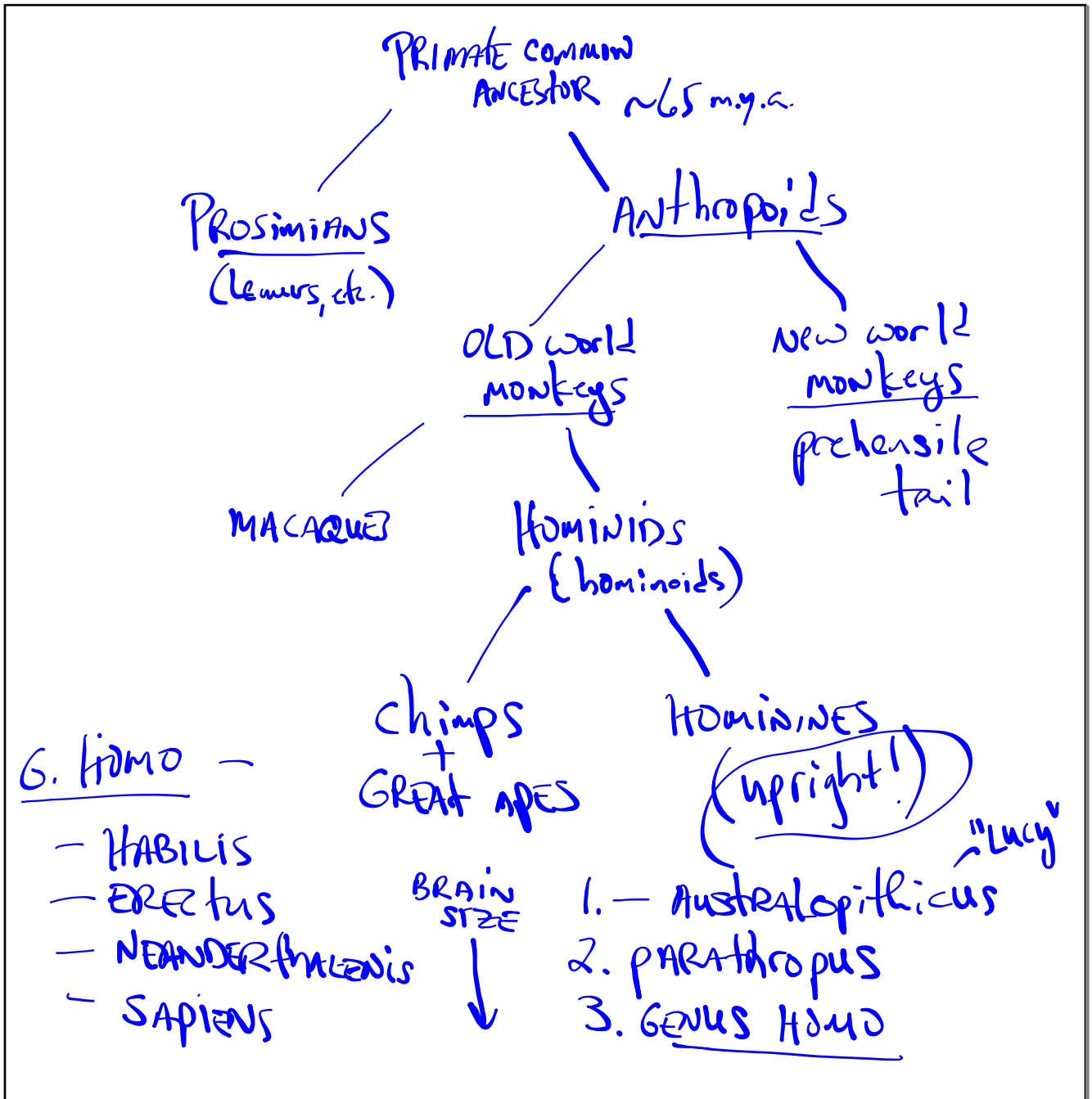
2. ch. 17 + 32-3



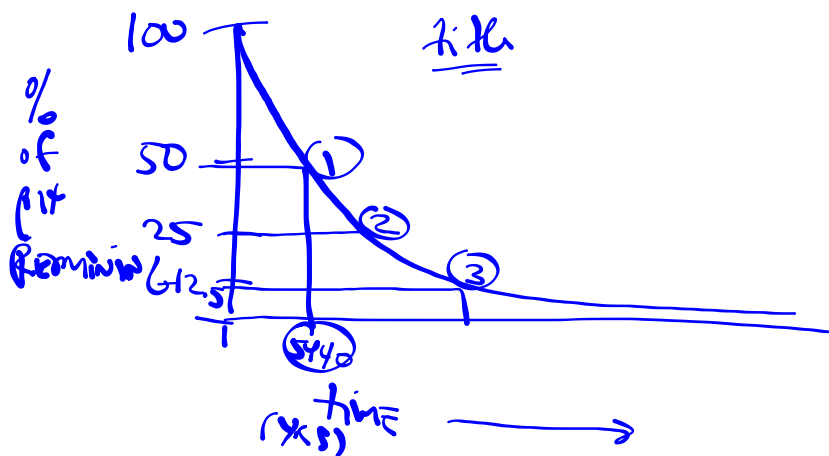
GRADUALISM - DARWIN

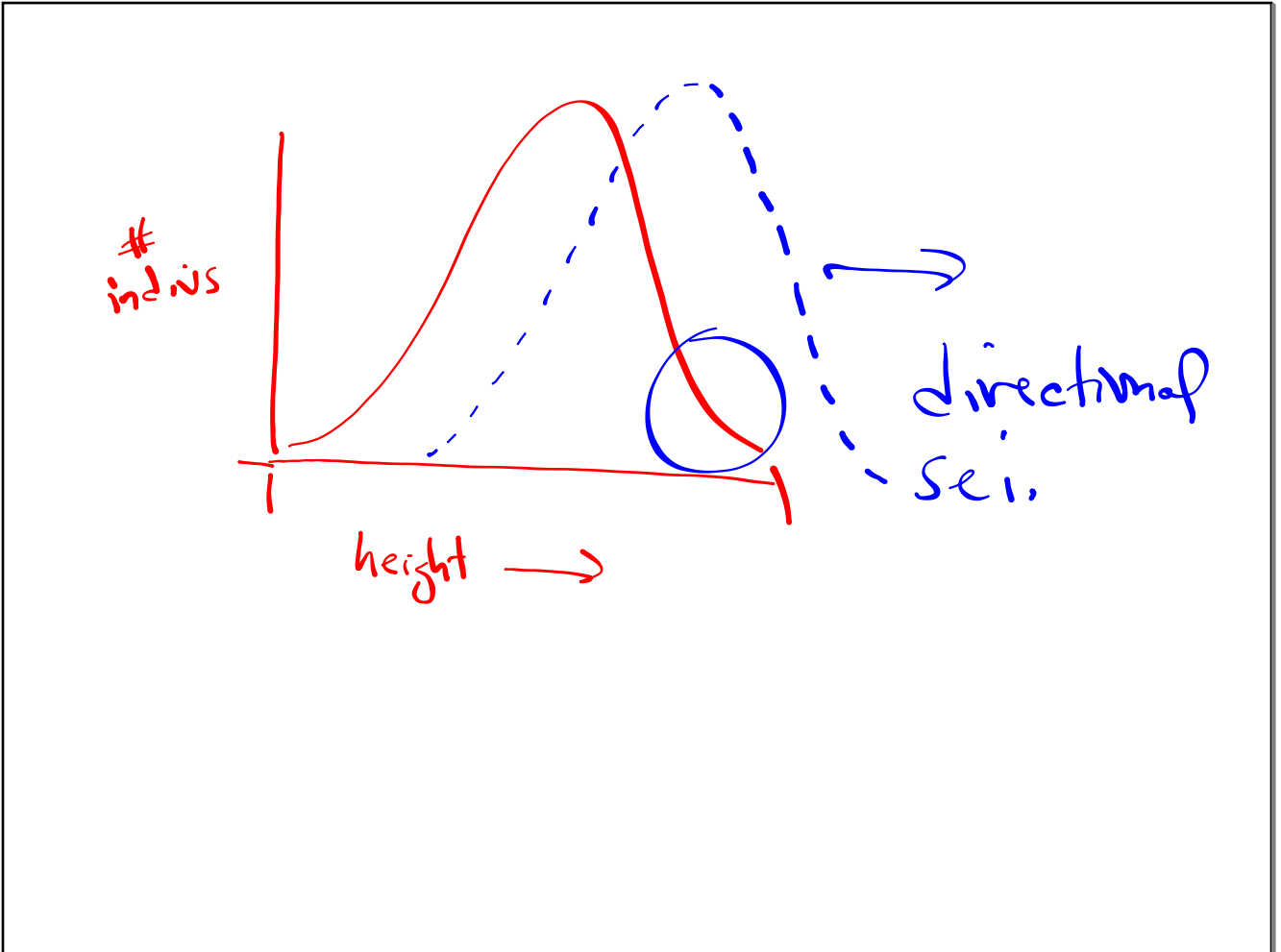
→
→
PUNCTUATED EQUILIBRIUM -

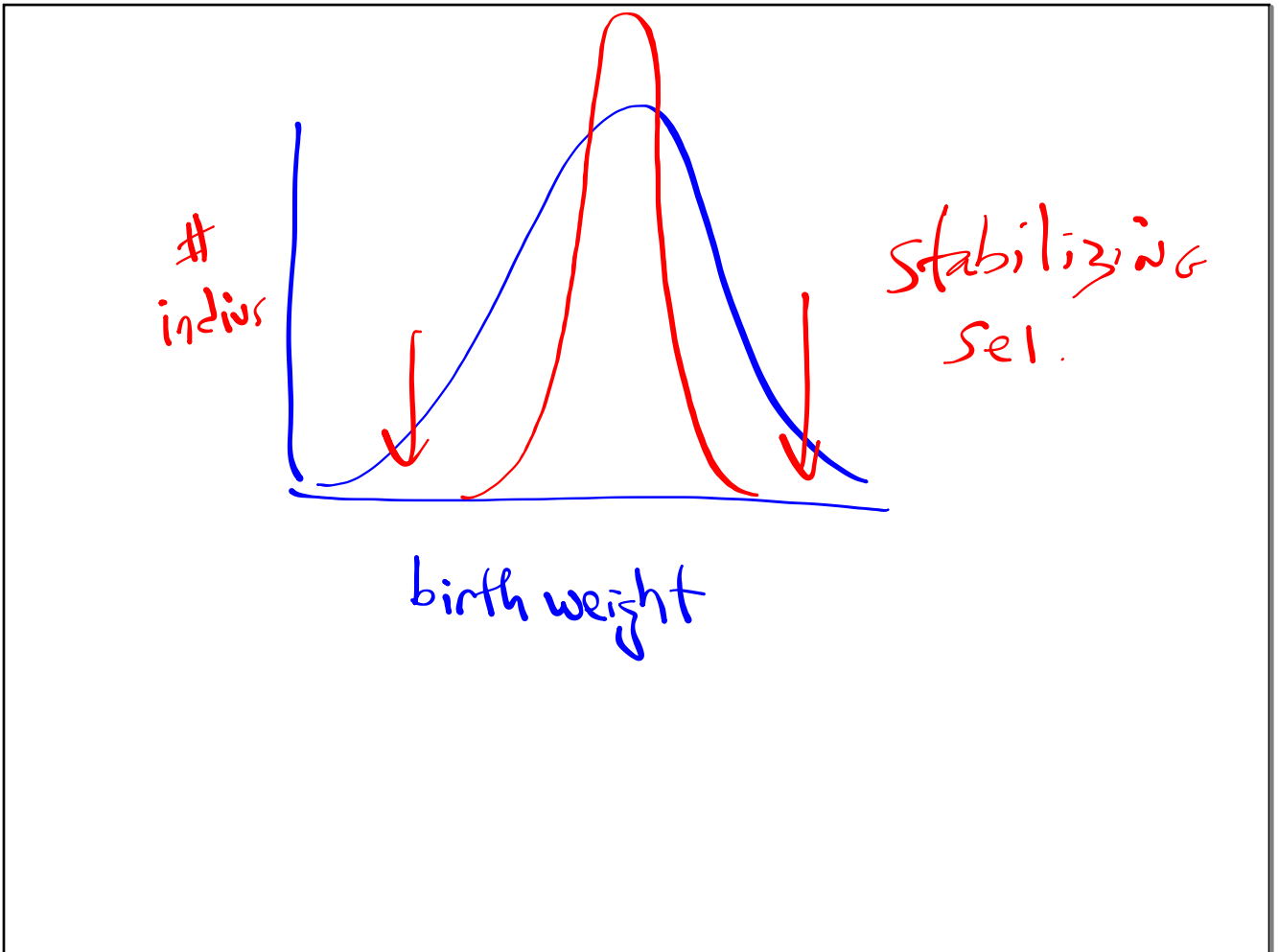


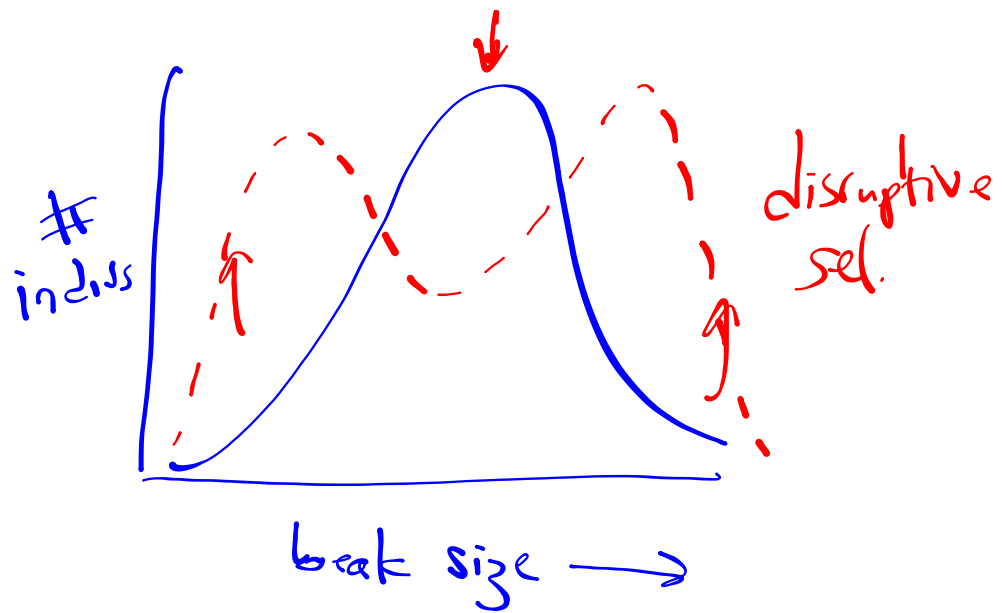


HALF-LIFE - time for $\frac{1}{2}$ of sample of
radioactive isotope to "decay"
back to stable form.









GENETIC DRIFT - small pops.

FOUNDER EFFECT

→ NEW pop. FORMED

