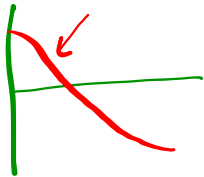
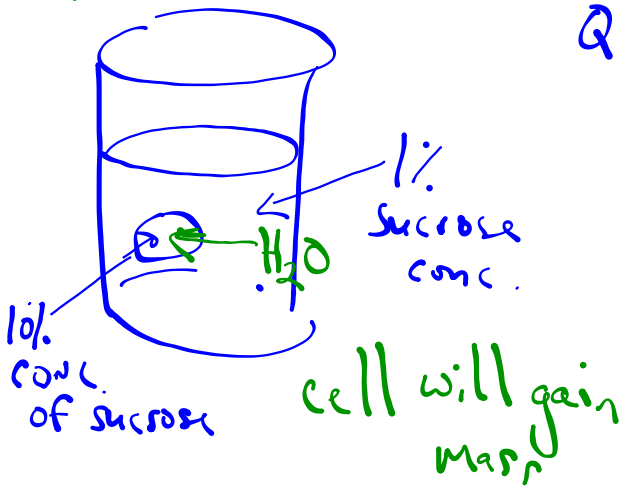


Please get out  
"Ch. 7 Test:  
What to Know"



# OSMOSIS

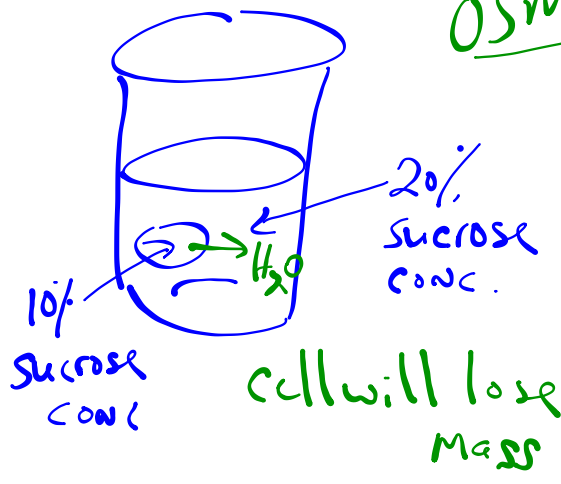


Q. what kind of solution is this?

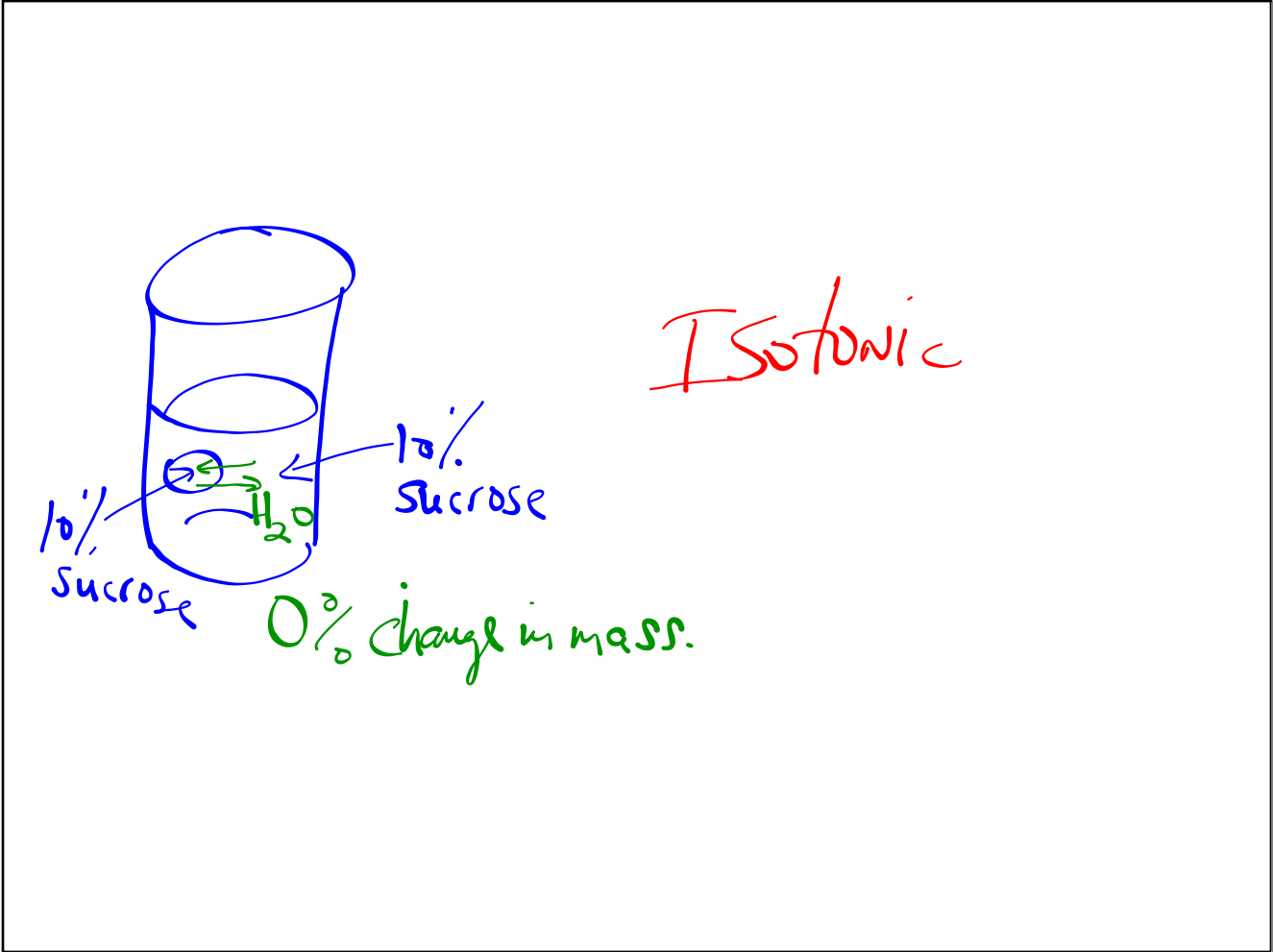
Hypotonic

— solute conc. in ENV. is lower than inside cell

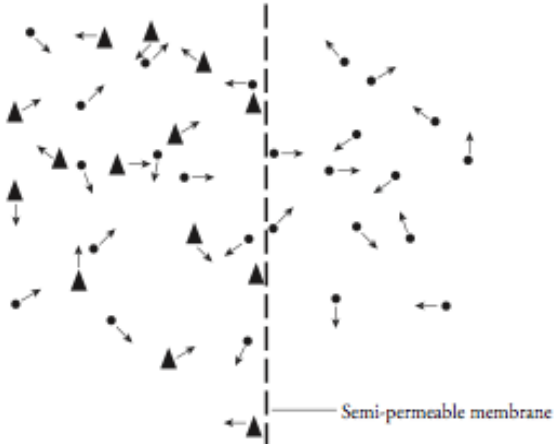
OSMOSIS



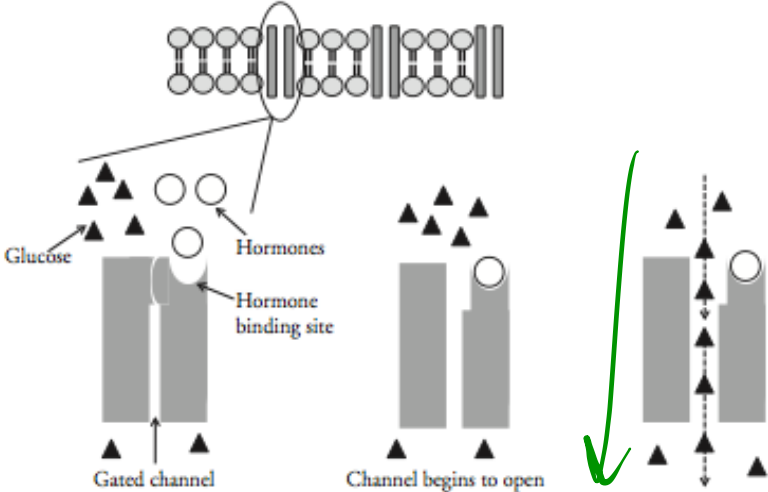
**HyperTonic -**  
Solute conc.  
in ENV. is  
higher than  
inside



**Model 1 – Simple Diffusion**



**Model 3 – Facilitated Diffusion**



**Model 4 – Active Transport**

