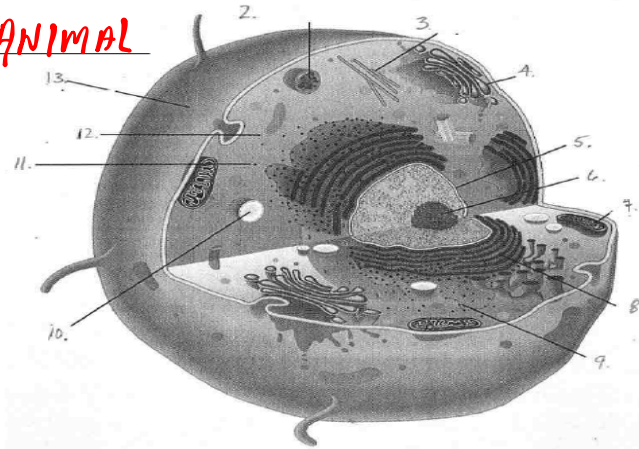
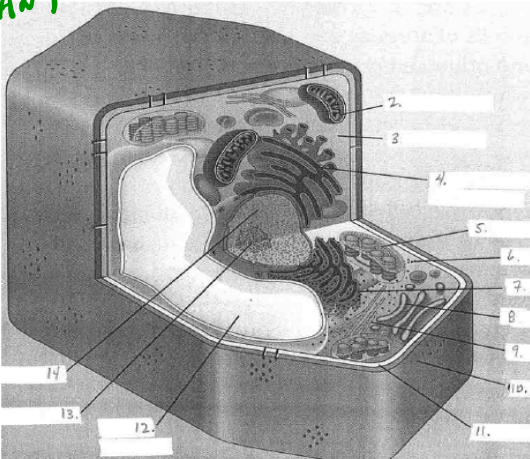


1. Type of Cell? **ANIMAL**



#	Structure	Function (4 words or less)
2	LYSOSOME	BREAKS DOWN MOLECULES
3	CYTOSKELETON	FRAMEWORK + TRANSPORT
4	GOLGI APPAR.	ATTACH CARBOHYDRATES → PROTEINS
5	NUCLEUS	LIKE THE BRAIN / CONTROLS CELL, HOLDS DNA
6	NUCLEOLUS	RIBOSOMES MADE
7	MITOCHONDRION	EXTRACTS ENERGY FROM CARBS
8	ROUGH ER	PROTEIN TRANSPORT
9	RIBOSOME (ATT)	MAKES PROTEINS (MODIFIES)
10	VACUOLE	STORAGE OF WATER + NUTRIENTS
11	RIBOSOME (FREE)	" "
12	CYTOPLASM	FILLS CELL + HOLDS ORGANELLES
13	CELL MEMBRANE	CONTROLS WHAT GOES IN/OUT

Type of Cell? Plant



#	Structure	Function (4 words or less)
2	mitochondrion	"
3	cytoplasm	"
4	smooth ER	"
5	chloroplast	turns sunlight into food
6	ribosome	"
7	rough ER	"
8	golgi apparatus	"
9	cytoskeleton	"
10	cell wall	protection + support
11	cell membrane	"
12	vacuole	"
13	nucleolus	"
14	nucleus	"