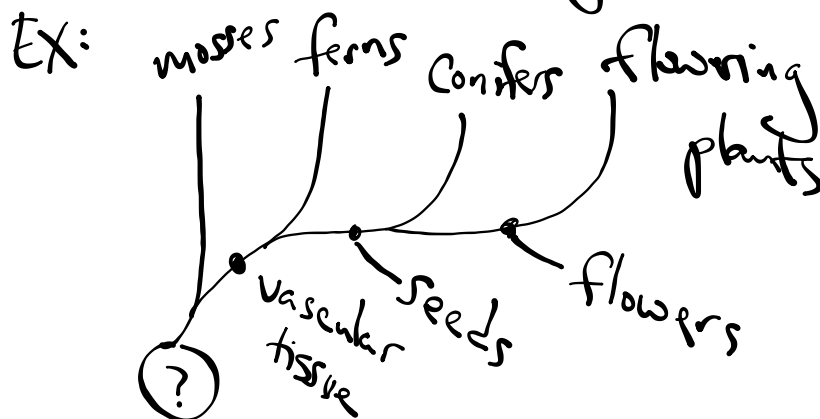


Cladogram

Considers "derived characteristics"
- evolutionary innovations



WBCs

- phagocytes - in bloodstream - "eater"

- lymphocytes - in lymphatic system

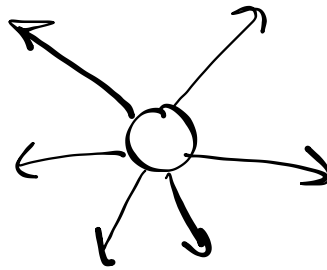
humoral immunity { - B cells - plasma - antibodies
- T cells - memory -

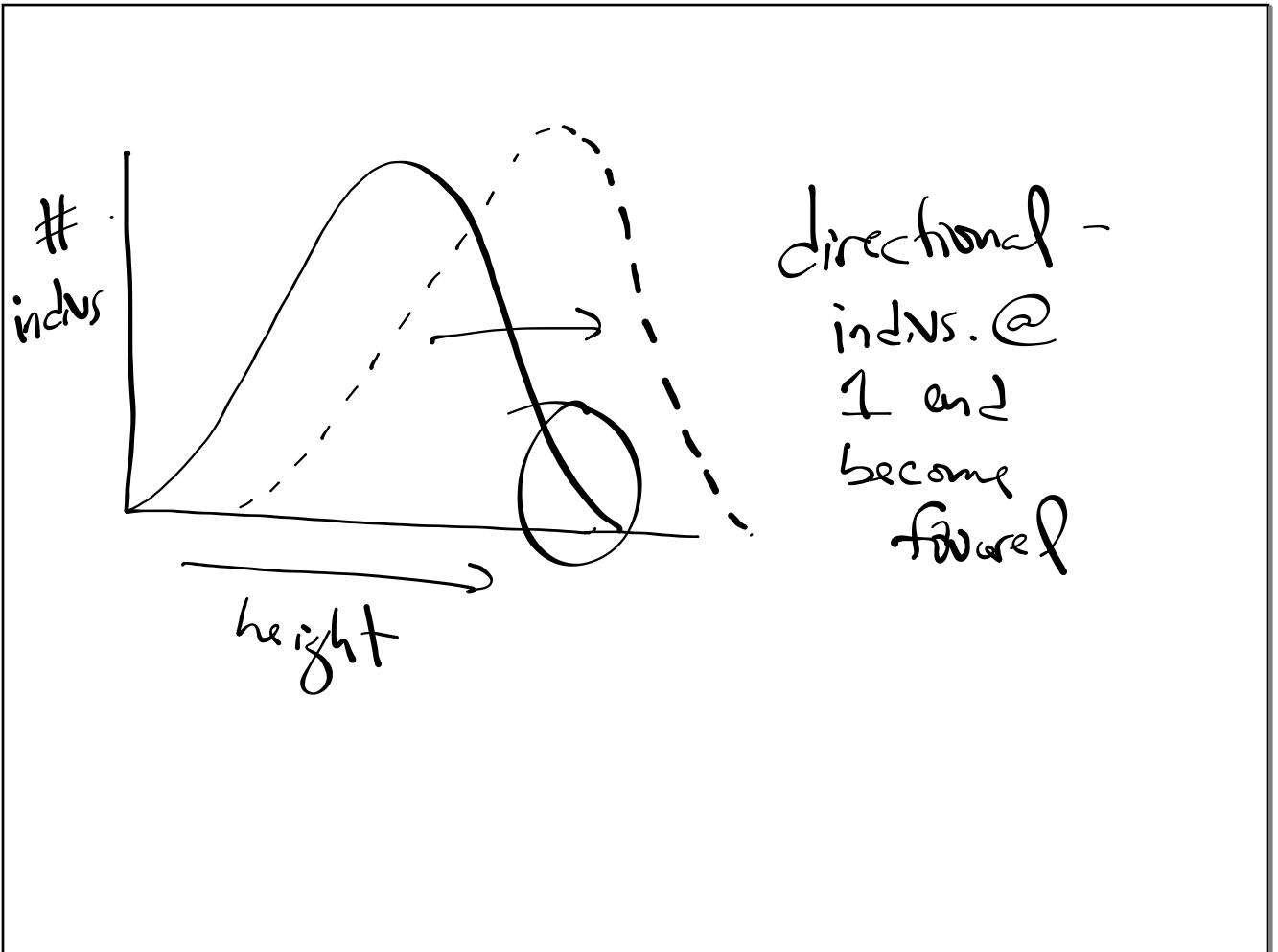
cell-mediated immunity { killer T cells - no antibodies

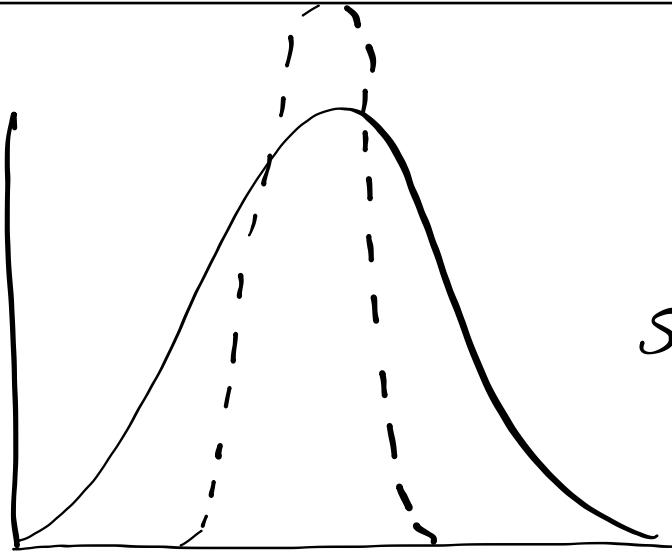
Vectors - Animals - carry
pathogens from person → person

- ex: mosquitos
fleas/rodents

Speciation -
Darwin's finches

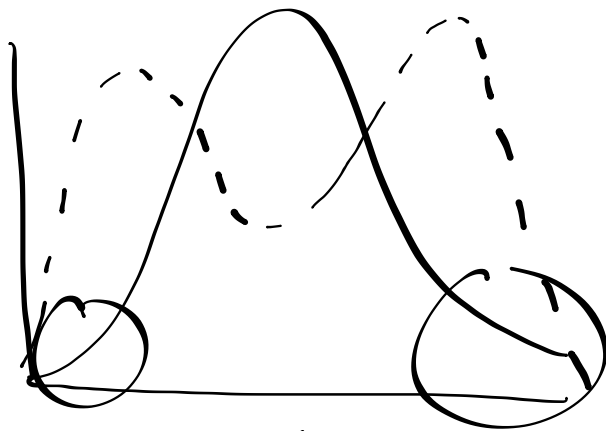






stabilizing
selection

indivs. in middle
become favored



disruptive
selection

indivs. @ Both ends
become favored

- geographic isolation
- temporal "
- behavioral "