

Lesson 1.3

Self-paced study

Number 1,2,3,4a, b, c, d, 5, 6 ,7, 8 on page 16 of your science notebook as directed by your teacher. All answers should be recorded in complete sentences.

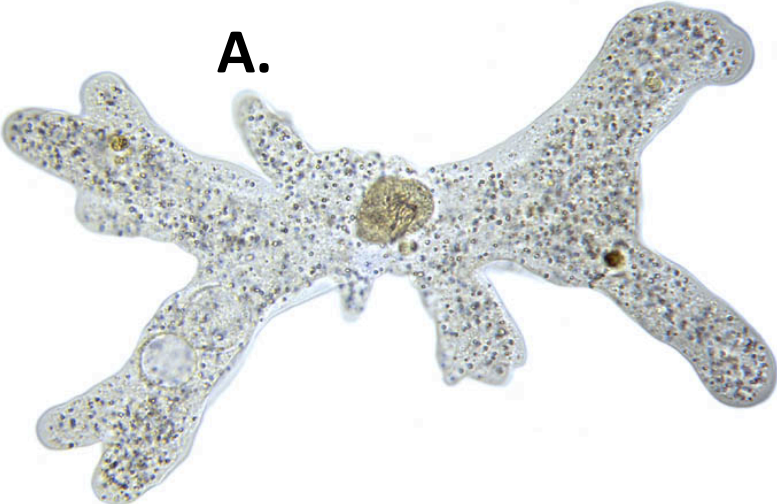
Think

- 1) If you were going to look inside the body for something that makes traits show up like they do in humans and other living organisms, where would you look? Why?

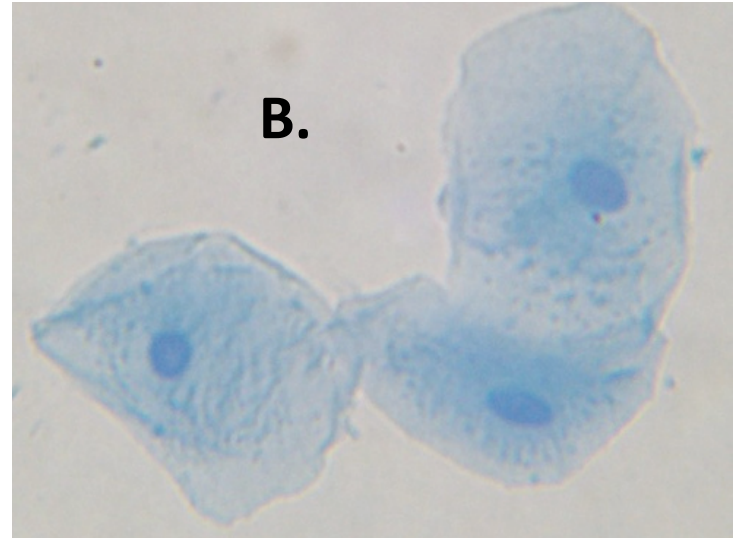
2) What do you know about what is *inside* humans, plants and other living things that enables organisms do the work of living?

3) What structures do these cells have in common? List (or describe) them!

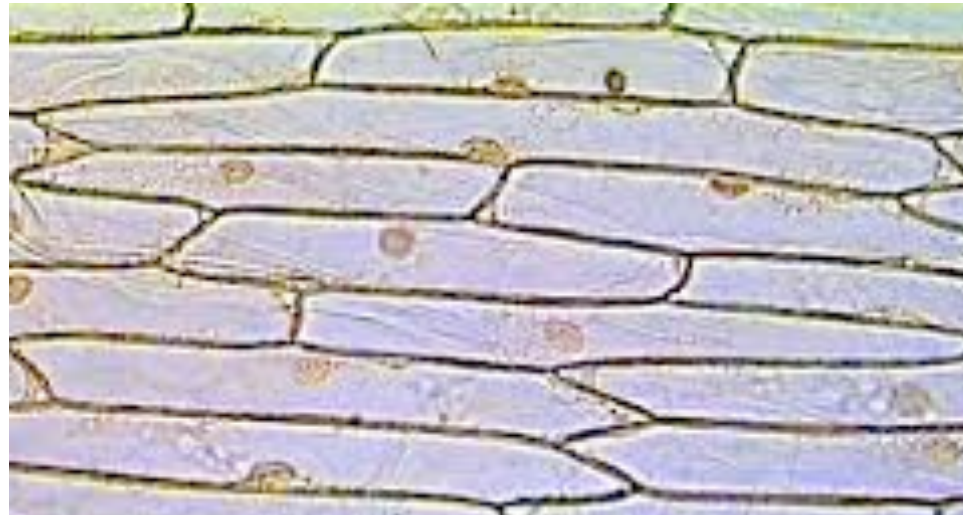
A.



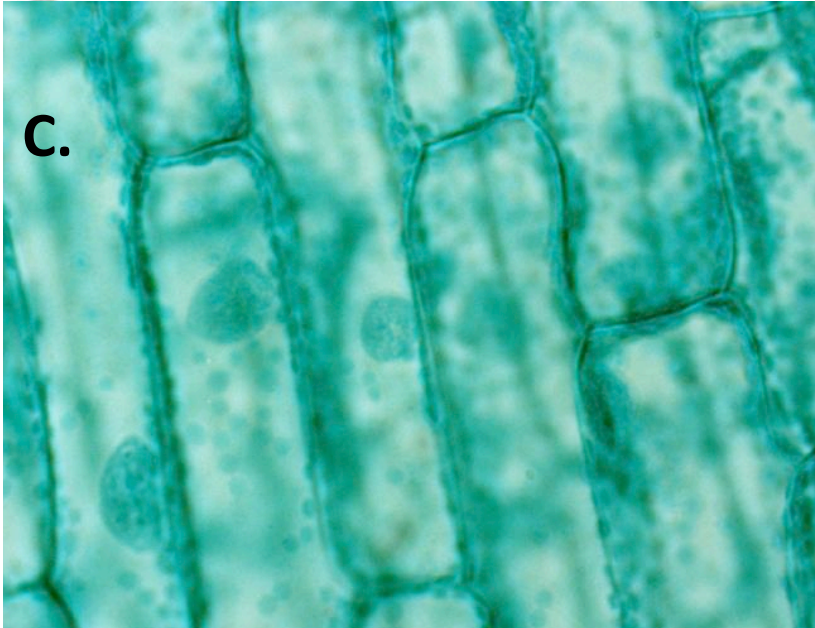
B.



D.



C.



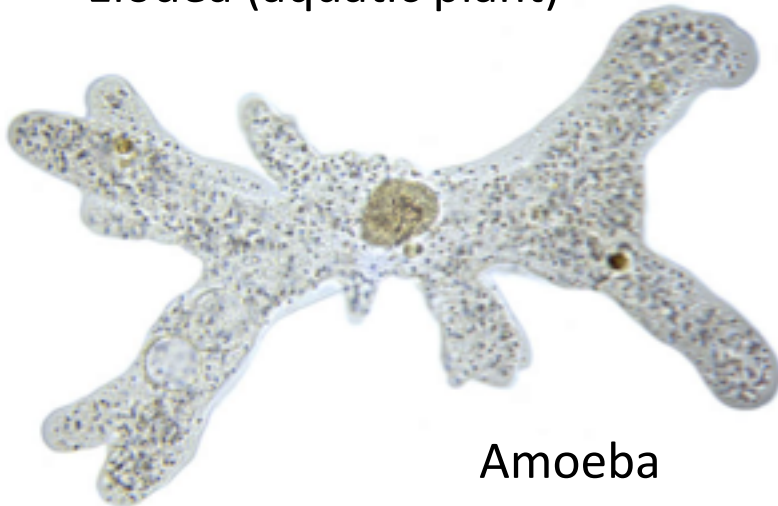
4) Match cells on previous slide to organism below? Clues? Traits?



Elodea (aquatic plant)



Onion
Bulb

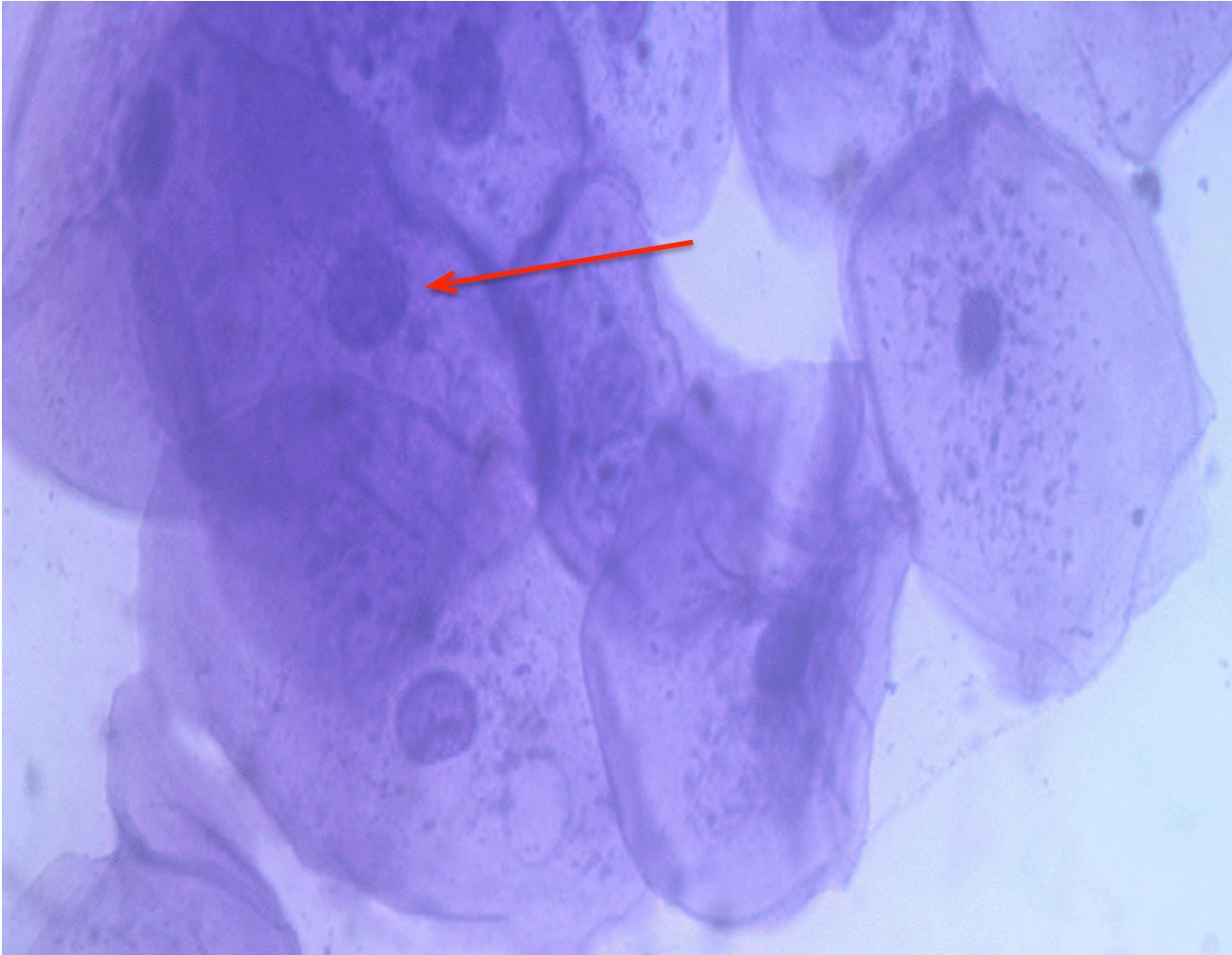


Amoeba

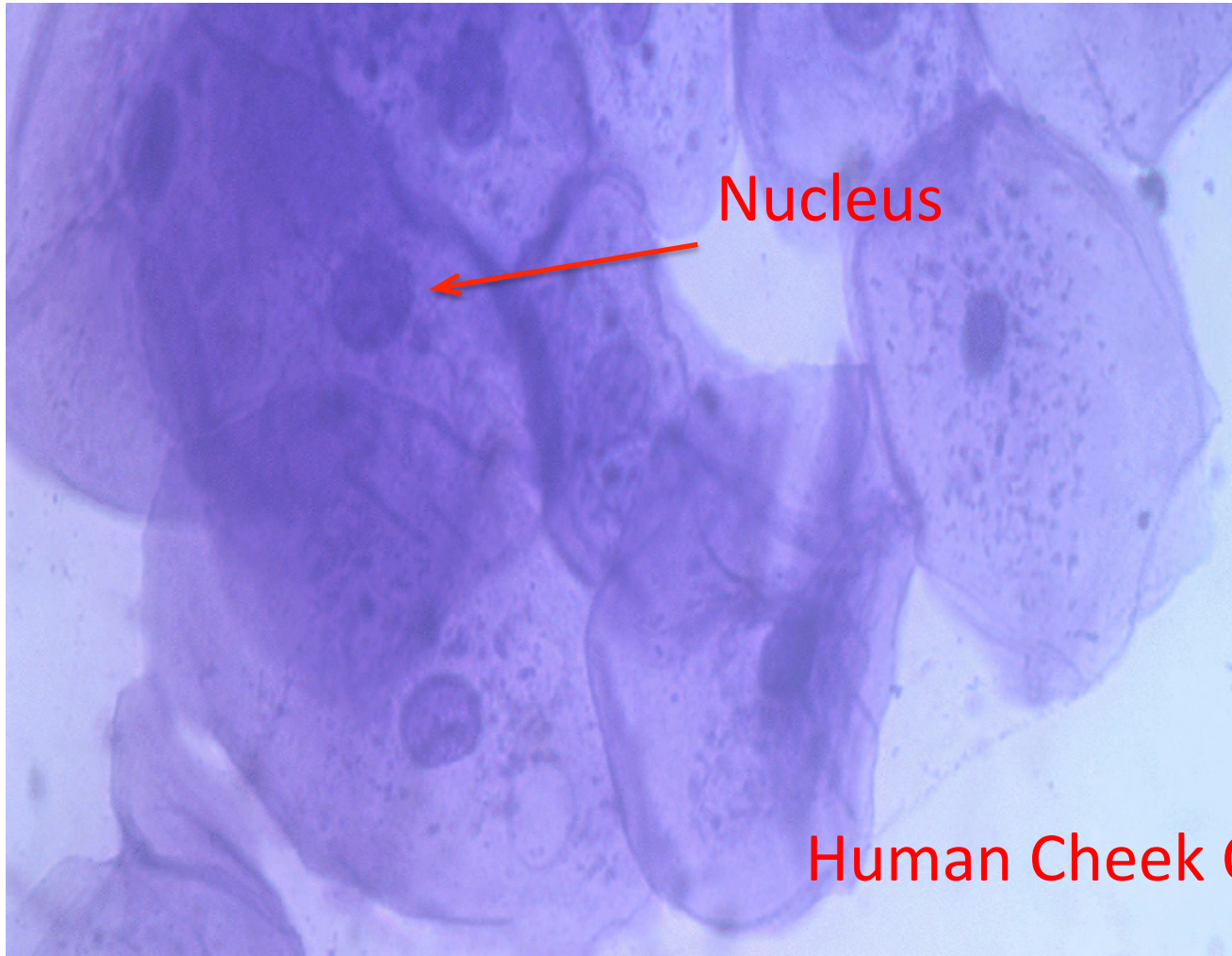


Human

5) What are the dark stained structures in each cell?

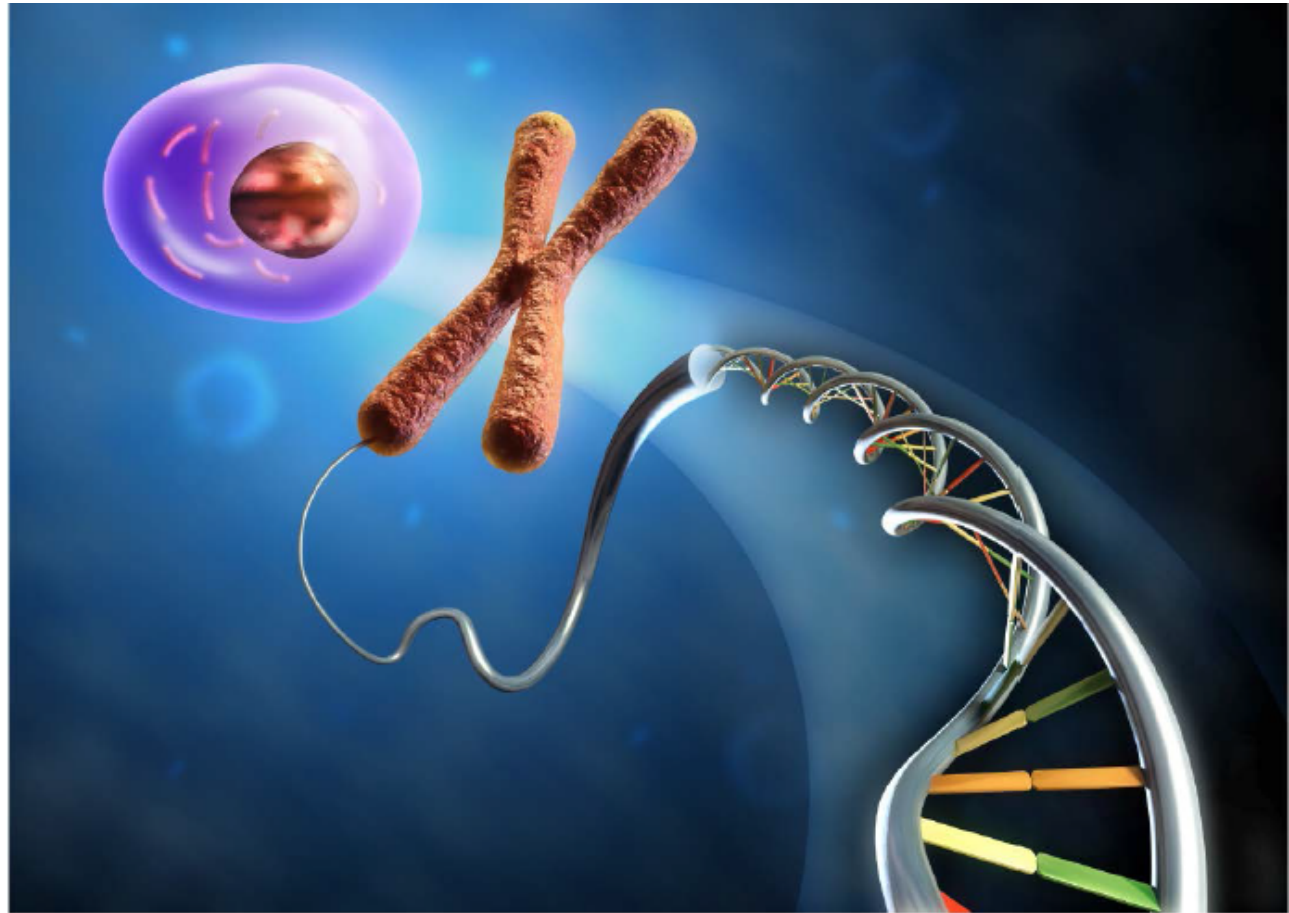


6) What is found inside the nucleus in the cell?

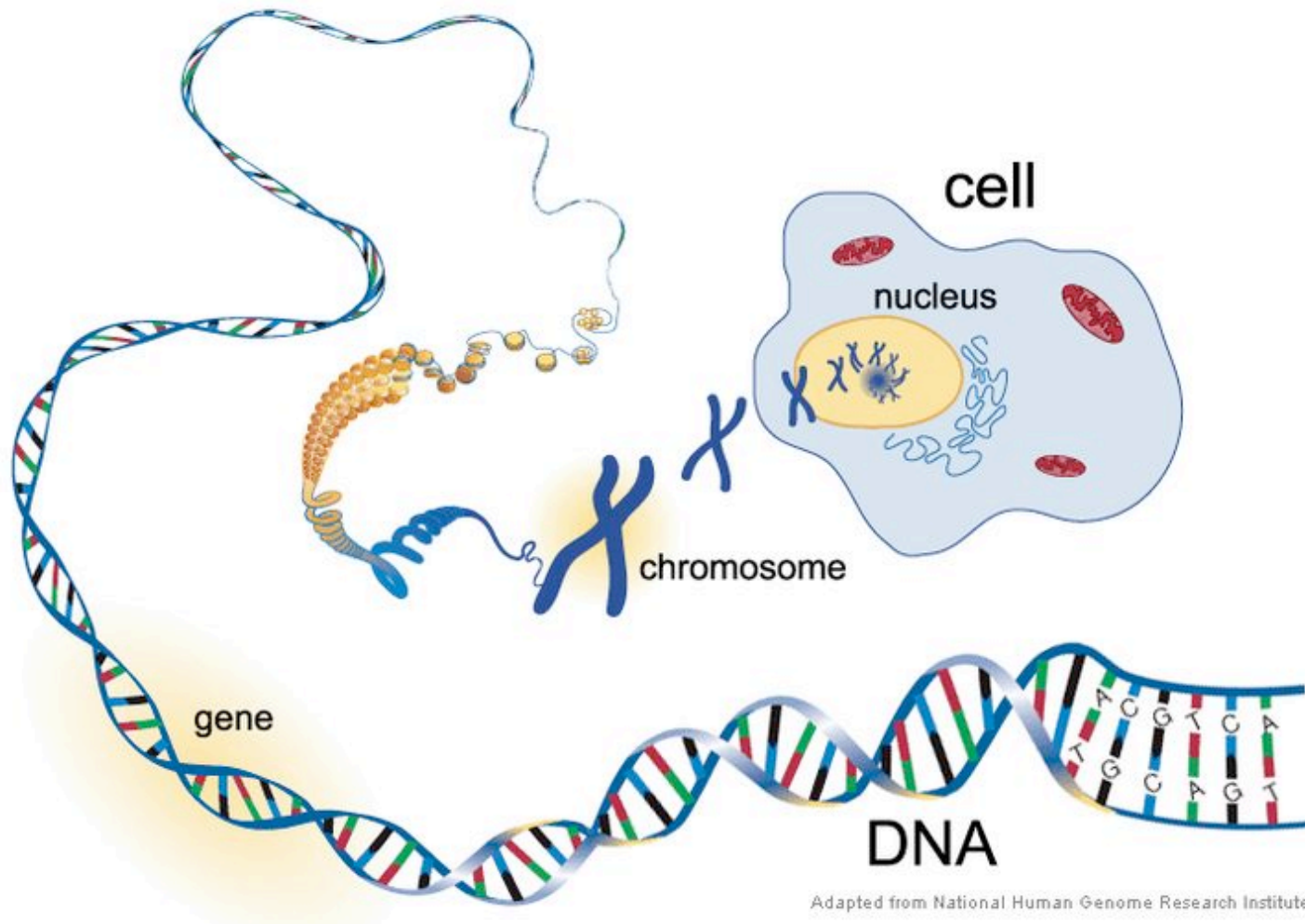


When technology improved....

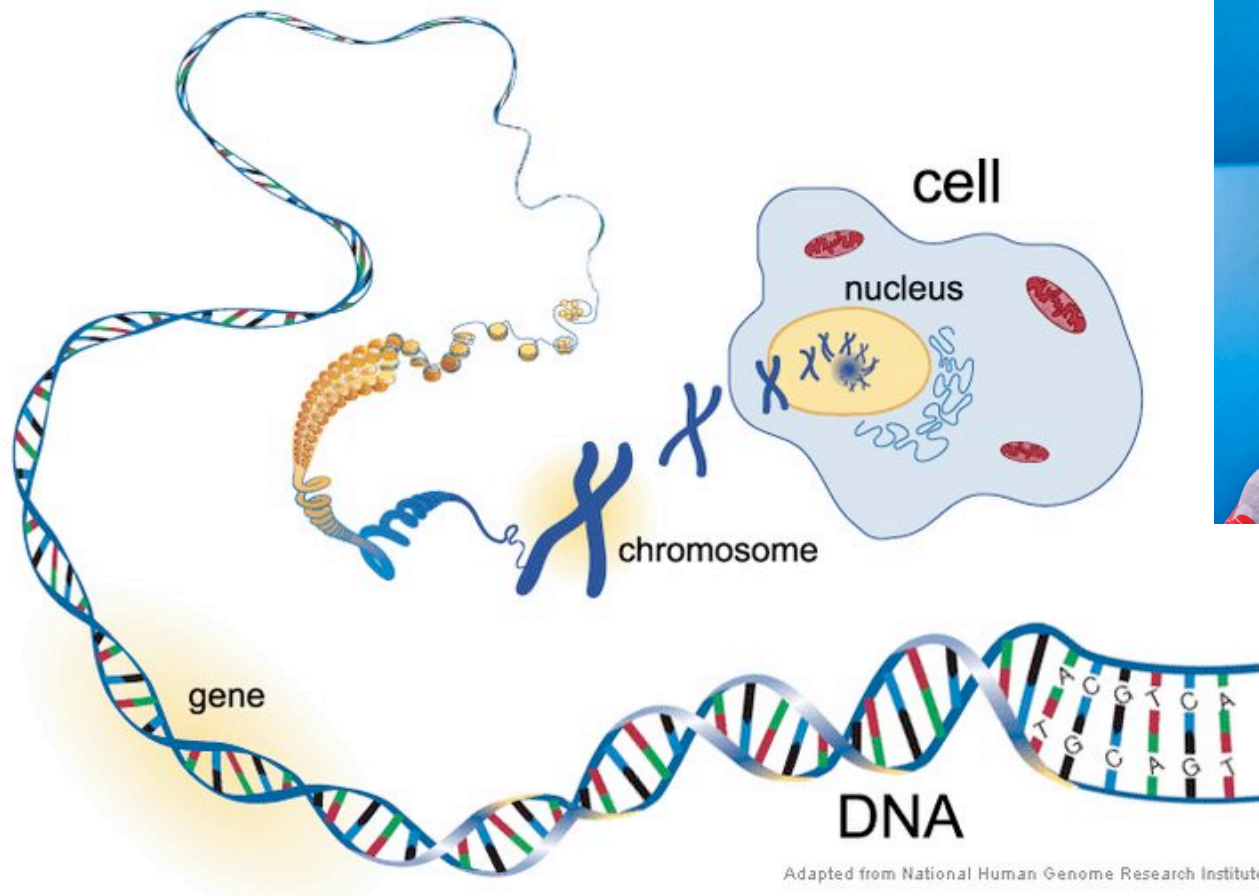
Scientists
observed
stringy stuff
in the nucleus.
DNA was the
“stuff.”



7) What do you think this diagram is meant to show? Start inside the nucleus and work your way out. Explain fully.



8) What do you think DNA, genes, and chromosomes have to do with traits?



Get Reading 1.3 and add to notability

ONE paragraph at a time—do the following:

- Skim silently once—no writing!
- As you read each paragraph a second time, circle key vocabulary words
- Underline ONE main idea per paragraph, two if you can't decide on only one 😊!
- Answer questions in the boxes (without pronouns).
- Add three margin notes. Finish for homework