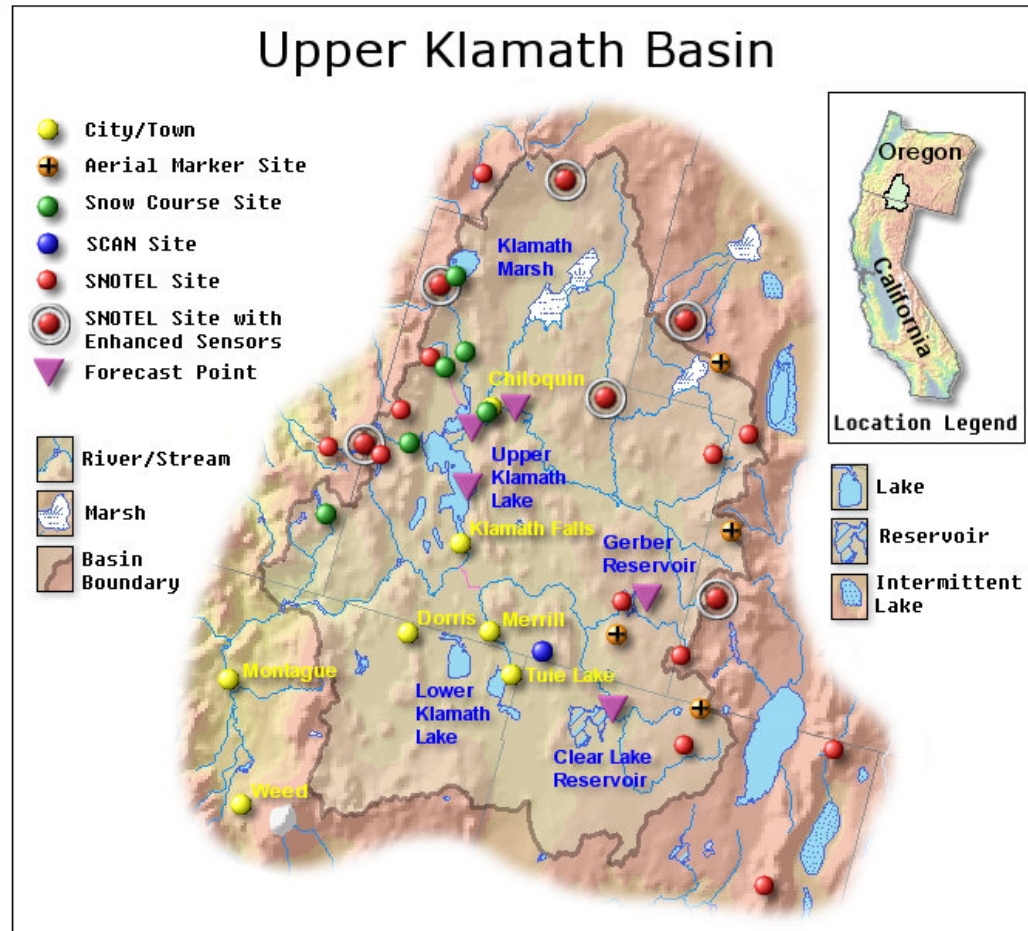


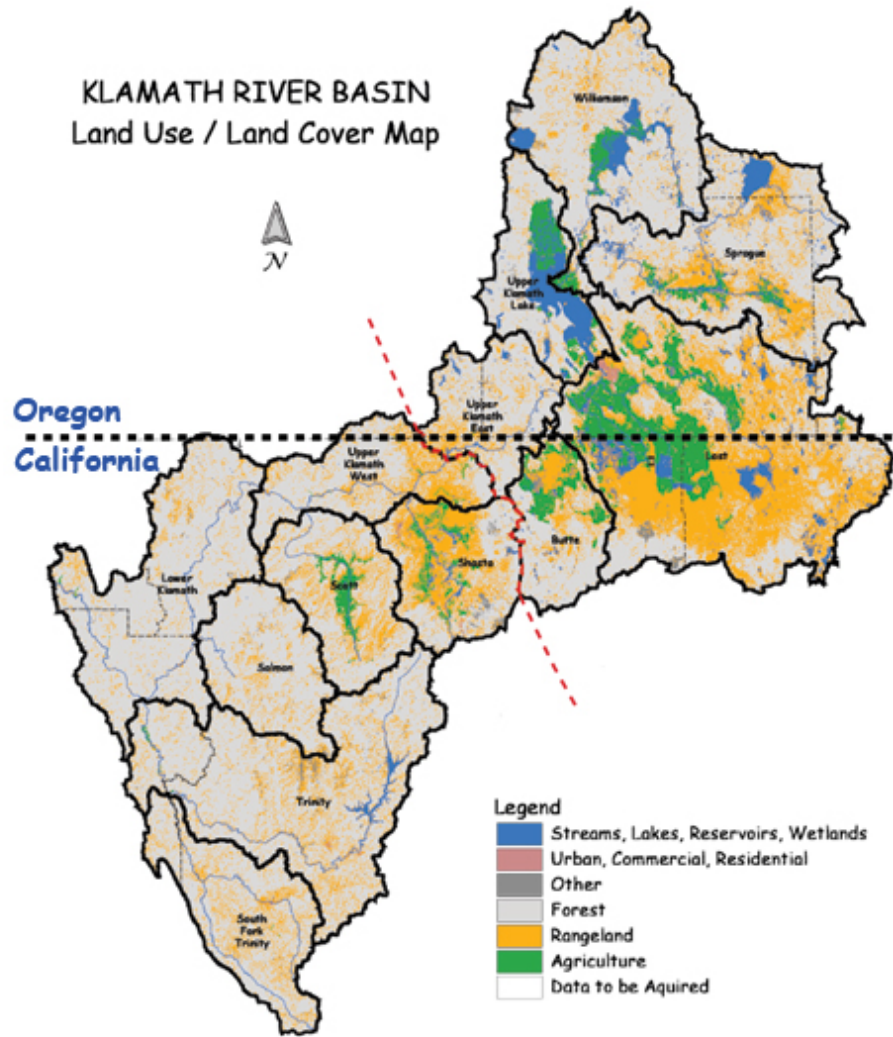
EQ #23- Why is there a Water Crisis in the Klamath Basin?

A case study of water stress
& Water Scarcity

Where is the Klamath Basin?



KLAMATH RIVER BASIN Land Use / Land Cover Map



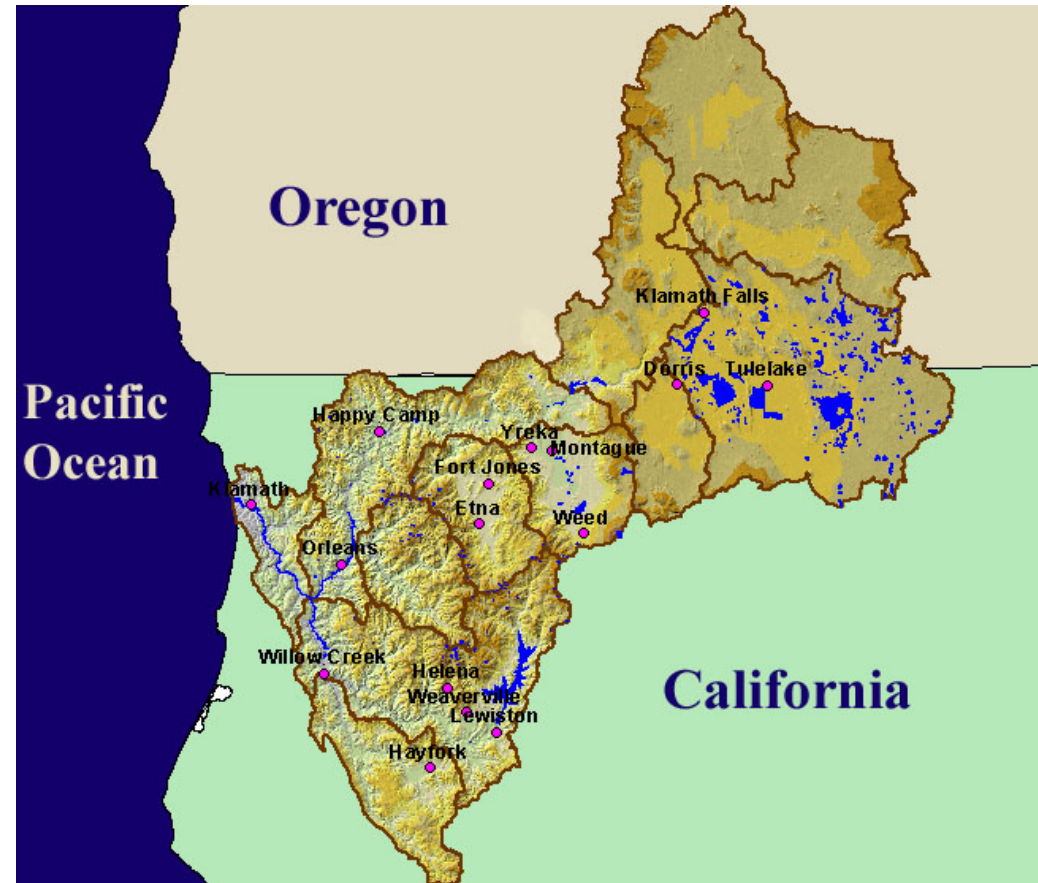
Oregon
California

- Legend**
- Streams, Lakes, Reservoirs, Wetlands
 - Urban, Commercial, Residential
 - Other
 - Forest
 - Rangeland
 - Agriculture
 - Data to be Acquired



Where and what is the K Basin?

- It is a watershed that straddles Oregon and California near Klamath Falls.
- Is a series of streams, rivers, lakes and reservoirs.
- What can you infer about the **climate?**
Population? Jobs?
Demographics?



What does it look like?



What is a water stress?

- **Water stress**—Is when there isn't enough water to meet a community's demands—is common throughout the US.
- Too little water can lead to a **water crisis!**

- K... BEFORE to ... AFTER



What is happening in the K Basin?

- In the Klamath Basin, competing needs for water have pitted community members against each other.

Why not enough water?

- A dry climate prone to drought
- A rural community that relies heavily on agriculture for jobs and needs water to irrigate.
- The Native American community there has been stripped of its land and access to resources over time.
- Federal laws that protect endangered salmon.

Read the background about the K Basin

- Read the article, *Can an uneasy truce hold off another water rebellion on the Klamath?* (First 17 paragraphs only) describing the K Basin water crisis.
- **Mark it up!**
- When you're done- **Write a ONE paragraph summary** of what you read **OR FIVE Fun Facts** in your INB on your LEFT side INB.
- **Think about...**
- What happened in 2001-02? Why?
- Why are locals concerned again about the situation currently?

What is the Klamath Basin Water Crisis?

- In the Klamath Basin, there is too little water to go around for all who want/need it = crisis!
- Farmers
- Native Americans
- Environmentalists wanting to protect - Salmon, sucker fish and birds
- Electric power utilities
- Commercial Fishermen
- All have a stake in using water for their interests.
- How should we decide who has the right to it??

Use the Film Notes Grid as you watch

- Record **KEY** information as you watch the film for each of the **Bold Terms** on the Film Notes Grid.
- They are roughly in synch with the film

Watch the Film

- The Klamath Basin- a Restoration for the Ages
- <http://www.watereducation.org/topic-klamath-river>
- Or try this link
- https://www.youtube.com/watch?v=em_VpkrxwV0

Stakeholder Sheet

- Use the following slides to fill in any gaps on your stakeholder notes.
- The Stakeholder Notes Sheet is a **GRADED** assignment and needed for the final activity.