

6th Grade Science 3/13/19

EQ: Could the bull frog have a major impact as a predator?

CW: Activity 7.1 and 7.2

HW: No HW

Agenda

1. Writing Prompt

2. Activity 7.1 External structures of frog

3. Begin Activity 7.2

Open Ended Question



Write silently for three minutes: What impact do you think the bullfrog would have on native species. Give specific examples. You may use your book. What do you think should be done about the bullfrog?

Fill in the Blanks

organs

moist

layers.

outer

(germs)

injury

THE SKIN of a Frog

' The skin is a thin _____ body covering for the frog. It consists of the _____ epidermis and the inner dermis _____. It functions to protect the more sensitive inner _____ of the frog from physical _____ as well as from harmful microorganisms _____ in his outer environment.

Fill in the Blanks

skin

(oxygen

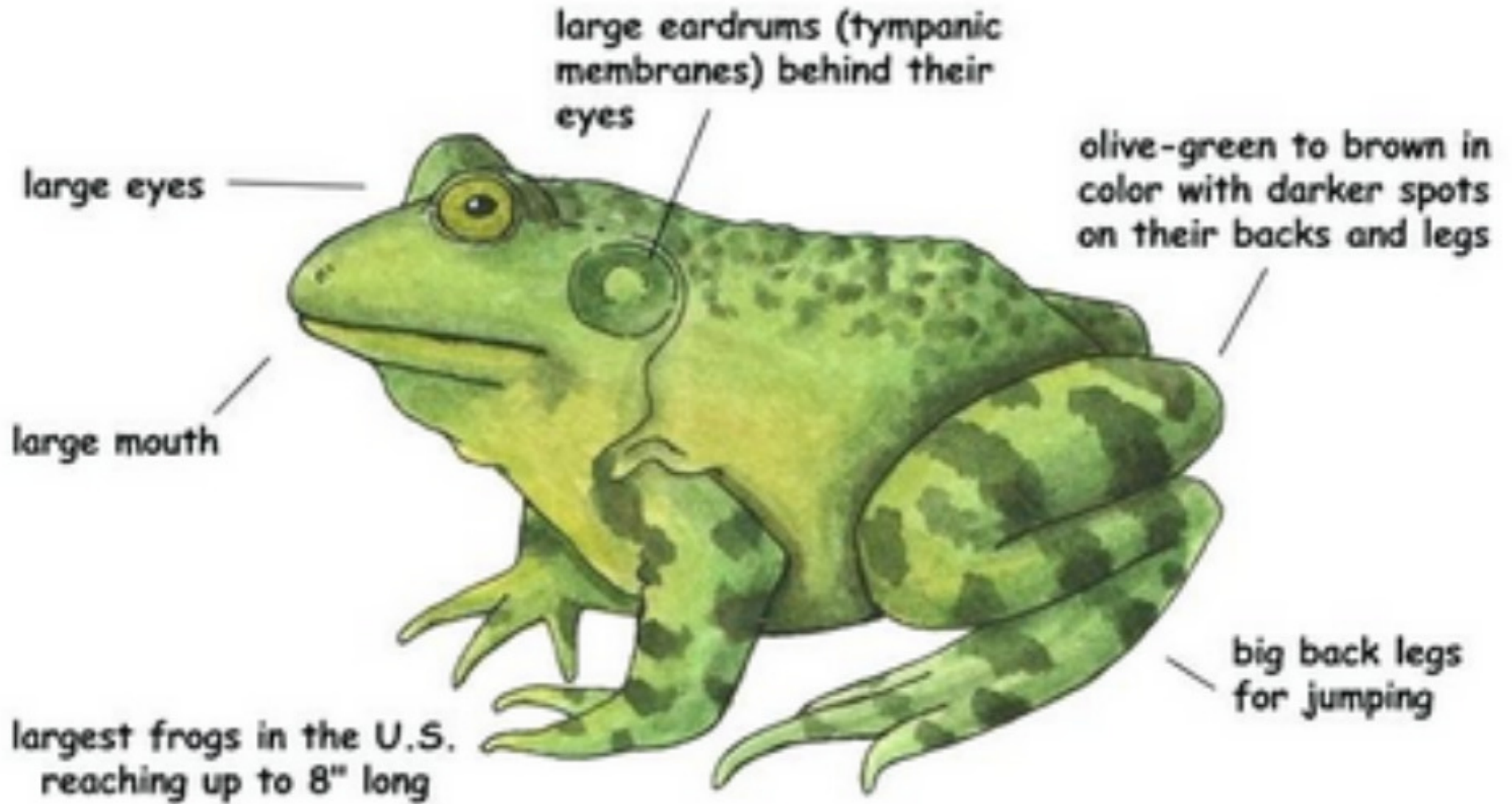
water

respiration.

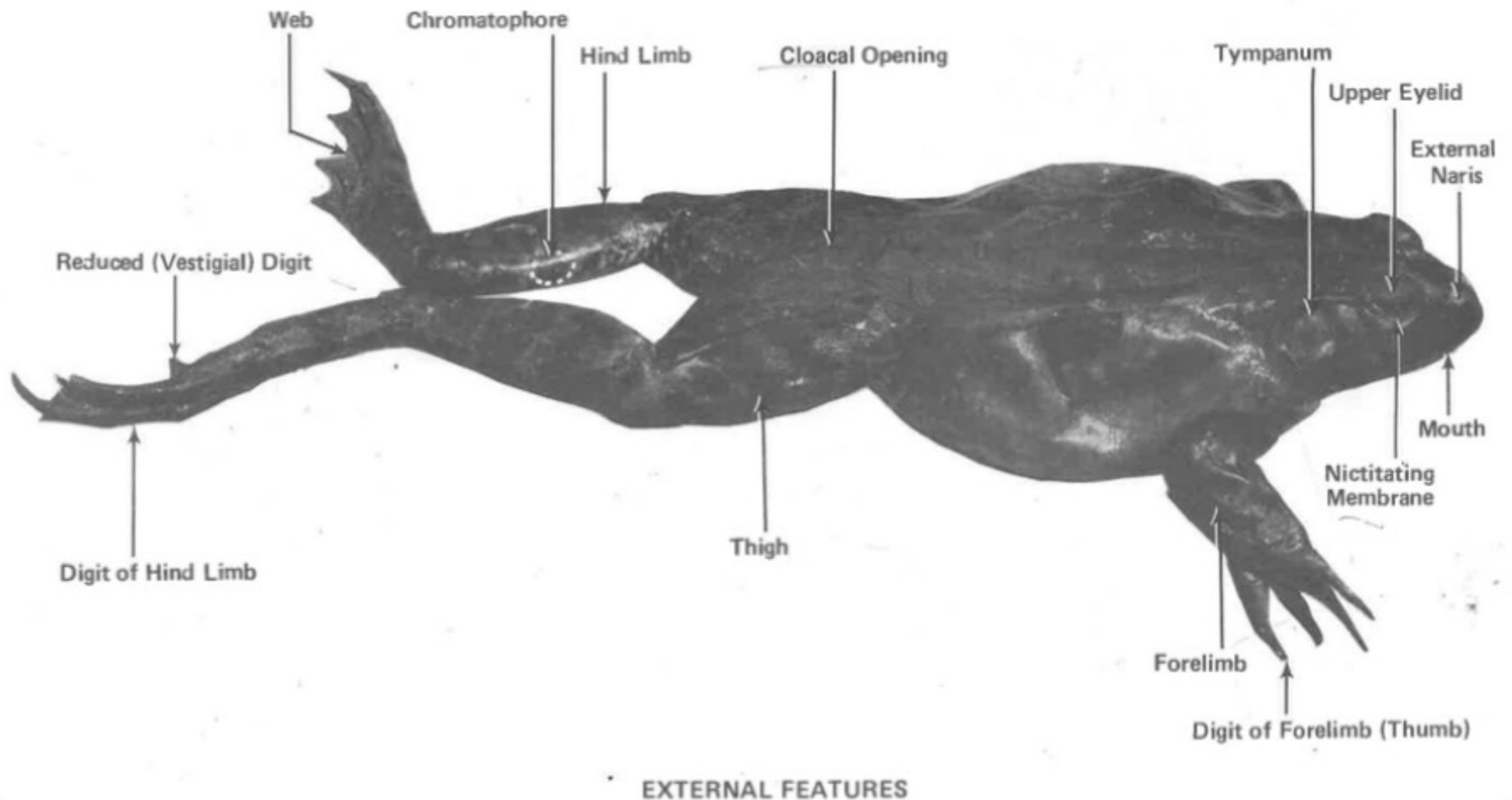
It also serves as an organ of _____ The frog exchanges respiratory gases _____ and carbon dioxide) across its _____ as well as through its lungs. The frog also absorbs _____ through its skin.

American Bullfrog

Rana catesbeiana



Activity 7.1 – External structures of the bull frog pg. 65
Draw and label the frog. Then use the book to write the
function of each body part below your drawing.



Frog Paper Dissection

Background: Students can learn about a frog's body without actually dissecting one. This way, we can help not to deplete the wild frog populations nor put frogs through unnecessary pain. This paper dissection will give you a good idea of what a frog dissection is all about and help you to better understand comparative, structural and functional anatomy.

Instructions:

1. Color the organs on the organs sheet according to the colors below and then cut them out. This is a male frog.

esophagus: pink

stomach: pink

lungs: orange

spleen: dark grey

kidneys: olive green

urinary bladder: yellow

liver: brown

gall bladder: green

testicles: beige

ureters: yellow

fat bodies: yellow

small intestines: pink

rectum: pink

cloaca: red

pancreas: aqua

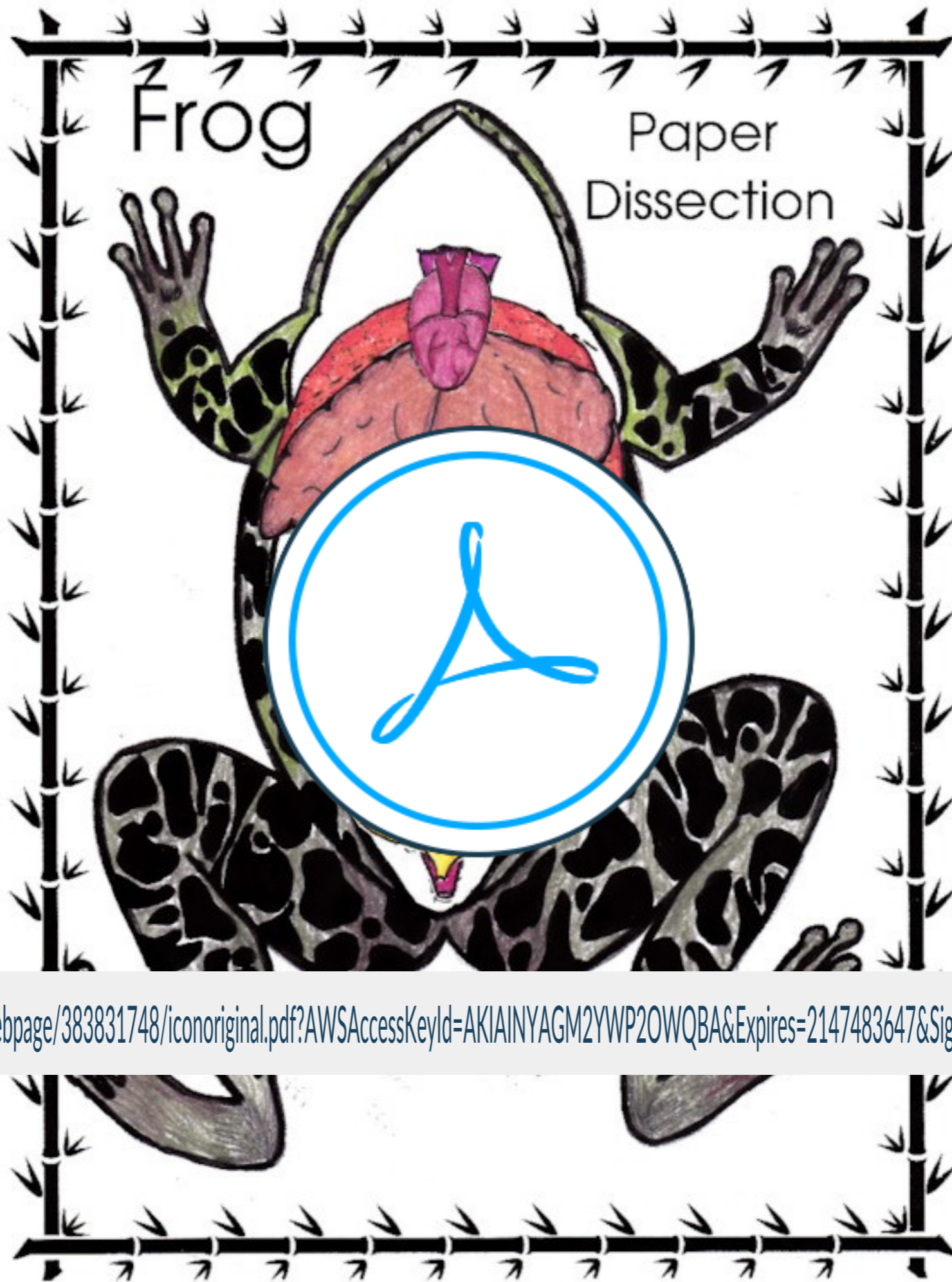
heart: red

Frog Paper Dissection

- 1) Carefully color organs according to directions
- 2) Follow directions, cutting organs out as you need them (NOT all at once)

Samples of Frog Paper Dissection Construction in Sequence





<https://cf.nearpod.com/neareducation/new/Webpage/383831748/iconoriginal.pdf?AWSAccessKeyId=AKIAINYAGM2YWP2OWQBA&Expires=2147483647&Signature=NSjtq8k8sj%2Bq4dAThJQkf0ks7d8%3D>