

Zimbra

chinn@4j.lane.edu

---

**[princi\_elem] Lightspeed Flexmike Mute button damage**

---

**From :** Misty Jackson <jackson\_misty@4j.lane.edu> Thu, Mar 14, 2024 03:37 PM  
**Sender :** princi\_elem <princi\_elem-bounces@4j.lane.edu> 2 attachments  
**Subject :** [princi\_elem] Lightspeed Flexmike Mute button damage  
**To :** princi\_elem <princi\_elem@4j.lane.edu>, princi\_high <princi\_high@4j.lane.edu>, princi\_midd <princi\_midd@4j.lane.edu>  
**Cc :** tsstechteam <tsstechteam@4j.lane.edu>

Good afternoon -

Recently there have been tickets and reports of damaged Lightspeed Flexmikes (lanyard microphones). I wanted to review the proper use of the microphone and share the quick start guide (attached pdf) as well as the training video which is linked below.

The number one issue we are seeing is a broken/damaged mute button. On the top of the Flexmike there is a small white button and is technically labeled as a Power button but in reality the Flexmike doesn't need to be powered on and off. This button should be thought of and used as the Mute/Unmute button. It only takes a quick tap to Mute or Unmute the microphone. A person should never have to push and hold that button unless they are pairing the microphone to the system and generally that would be done by the TSS. The damage we are seeing appears to be from extended pressure on the button.

Administrators...I am asking you to please share this information with staff, perhaps viewing the video at a staff meeting. I think this quick review would be helpful for everyone and possibly eliminate the issues we are seeing. The microphones are no longer under warranty (not sure this would have been covered under the one year warranty) and replacement cost for schools is \$250 per microphone.

Thank you and please let me know if you have any questions.

Misty

*Side note: Spring Creek and Awbrey Park are in progress and do not have this system yet. ATA, Roosevelt, Howard and River Road have the AMX systems and those microphones are slightly different. Edison, North Eugene and Camas Ridge (new building) have the Extron system which is also slightly different than the Lightspeed systems.*



Lightspeed 975 Training Video (includes lanyard microphone controls) - <https://lightspeed-tek.com/products/975/?tab=support>

Misty Jackson  
Instructional Technology and Systems Specialist

---

Eugene School District 4J  
[4J Instructional Technology](#)  
541-790-7567

For technology assistance please visit <https://eugene4j.freshservice.com>

---

You received this message because you are subscribed to the 4J list "princi\_elem".

Send e-mail to this list at [princi\\_elem@4j.lane.edu](mailto:princi_elem@4j.lane.edu)

To unsubscribe from this list, send e-mail to [princi\\_elem-unsubscribe@4j.lane.edu](mailto:princi_elem-unsubscribe@4j.lane.edu)

---

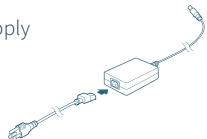
 **975\_Quick\_Start\_QS0592US01-7.pdf**  
891 KB

# 975

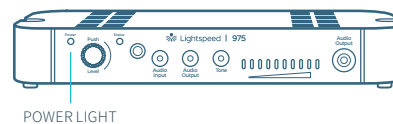
## Instructional Audio System

### CONNECT POWER TO THE 975

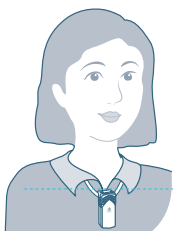
Connect the power supply to the 975 and plug the cord into an AC outlet.



The 975 will power on and the power light will glow.

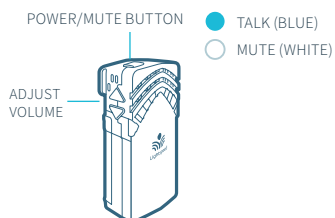


### USING THE FLEXMIKE



Remove microphone from charger. Press the mute button to unmute, hold near your mouth and begin speaking.

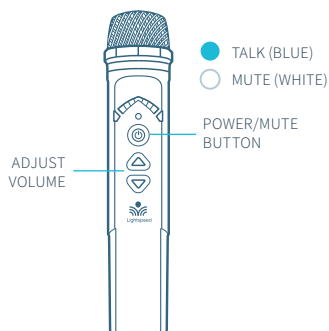
ALIGN WITH COLLARBONE



### USING THE SHAREMIKE



Remove microphone from charger and press the mute button to begin speaking.

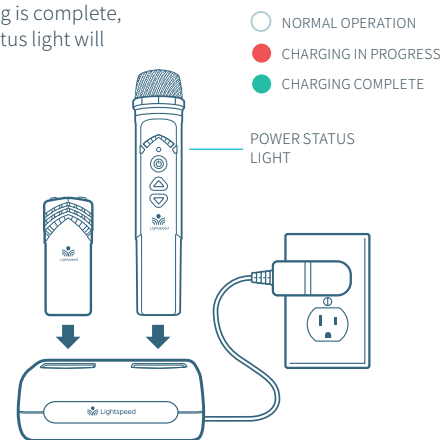


### CHARGE MICROPHONES NIGHTLY

Place the microphones into the cradle charger. The power status light will glow red when it is charging.

It takes about 5-6 hours to fully charge the microphone battery.

When charging is complete, the power status light will glow green.



### USING A WIRELESS AUDIO LINK

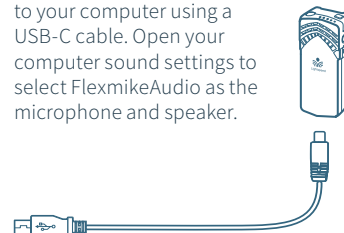
You can connect your 2nd (or 3rd) microphone to your computer's USB port to enable a wireless 2-way audio link.

**SEND AUDIO FROM THE COMPUTER** to the 975 to ensure all audio from the computer (videos, video conferencing, audiobooks, music, etc) can be played through the Lightspeed 975 system and speakers.

**SEND AUDIO TO THE COMPUTER** from the 975 to ensure the teacher's Flexmike and any student microphones are clearly picked up by a video conferencing solution.



Connect the microphone to your computer using a USB-C cable. Open your computer sound settings to select FlexmikeAudio as the microphone and speaker.



USB cable sold separately. Lightspeed offers a USB-A to USB-C cable for sale (part #USBC)

## PAIRING MICROPHONES TO THE 975

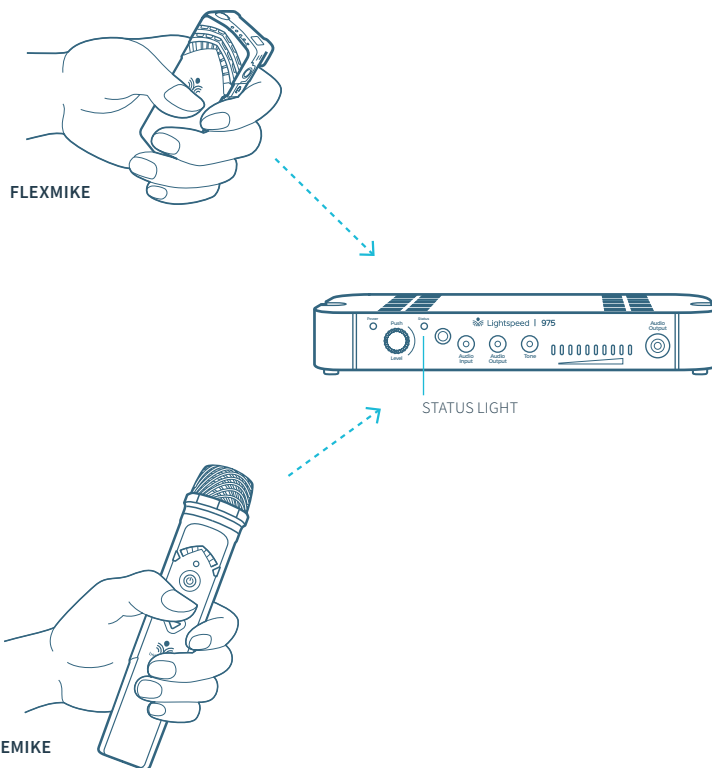
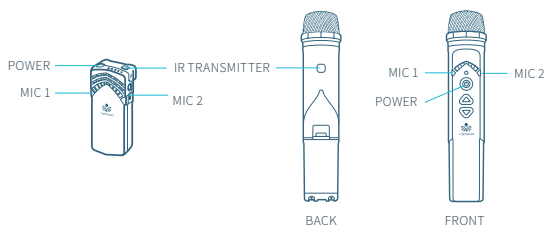


Your system is shipped with microphones and base units pre-paired for quick and easy use. If you ever need to pair new components, follow this pairing process:

**PLEASE NOTE:** Microphones should be out of the charger while pairing.

### 1 POINT MICROPHONES AT 975

From a powered off state, point the IR transmitter lens toward the base unit (for ShareMike, the transmitter lens is located on the back of the microphone).



### 2 PRESS AND HOLD POWER BUTTON

Press and hold the power button for 5 seconds until the Mic 1 and Mic 2 lights start flashing, then release the button and let the pairing process finish.

### 3 CONFIRM STATUS

The status light on the 975 will light up indicating the pairing process is complete. The Mic 1 or Mic 2 light on the microphone will stay illuminated.



If the microphone is out of range, it will automatically shut off after 30 minutes of trying to reconnect. Once you are back in the classroom, or in range, simply press and hold the power button on the microphone to power it up.



#### INSTALLATION GUIDE

For installation instructions, go to [www.lightspeed-tek.com/support/975-installation-guide/](http://www.lightspeed-tek.com/support/975-installation-guide/) (or scan the QR code).



#### USER MANUAL

For complete operating instructions, go to [www.lightspeed-tek.com/975-usermanual](http://www.lightspeed-tek.com/975-usermanual) (or scan the QR code).

QS0592US01-7



81-975-B