

# HALLOWEEN COSTUME PARADE

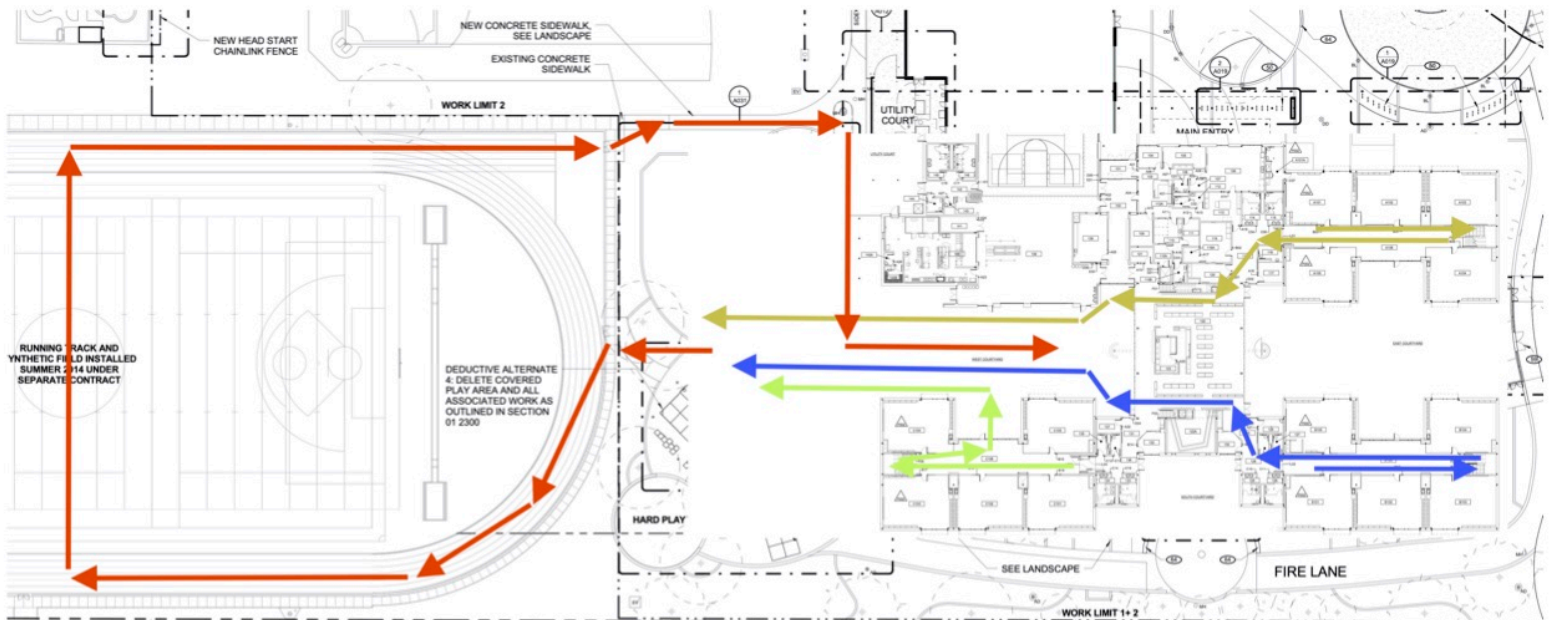
OCTOBER 31, 2019 AT 1:40PM



## Costume Parade to the Field

The Halloween Parade will start at 1:40 PM on October 31st. Classroom parties may run prior to or after the parade at the teacher discretion. At 1:40, upstairs classrooms will begin a single file line down their stairs and will pick up their downstairs buddy classrooms who will follow behind out to the field where we will parade around the track and cross the field at the 50 yard line. Here is the approximate schedule:

- 1:40 – Upstairs classrooms walk single file downstairs
- 1:45 – Downstairs buddy classrooms follow upstairs buddy classrooms
- 1:50 – Classes proceed single file onto the track area following the red arrows
- 2:10-2:20 – Classes return back to their rooms.



## Here are some important points to note:

- If it is raining, the costume parade will follow the below indoor map through the hallways, led by blue wing buddy classrooms and other classrooms joining behind as the parade train passes.
- Parents/guests should gather on the north side of the track (the street side) to watch the performance
- **Please have your class make a sign that includes your name.** You may want to post your sign on a yardstick for easier viewing. Your line leader should hold the sign high so that we know when one class ends and another begins.
- **Costume restrictions:** No toy weapons or weapon-like props should accompany costumes. No masks except for during the parade. No costumes of another ethnicity, race, or culture. No especially scary or gory costumes. You may want to ask students what they plan to wear at school prior to your celebration.
- **BE SENSITIVE TO STUDENTS WHO DO NOT CELEBRATE HALLOWEEN.** If you have any such students, please consider a harvest party rather than a Halloween party. Also, the Learning Center will be available for students not participating in the celebration.

## RAINY WEATHER PARADE ROUTE

