

Howard Elementary School Stairwell Graphics Application Specifications 2.19.16

Description - The 4J school district and Howard Elementary School would like to add educational graphics to the new HES's stairwells. Included with these specifications are drawings of each of the 3 stairwells and a plan view which locates each of the areas noted as 4, 5 and 6 in the building.

Application - The intent is to have the graphics applied directly to existing lightly textured walls with pressure sensitive vinyl (PSV) and (or) painted. Each stairwell will have 2 or 3 custom colors. The smallest type is 1.25" high.

Art Reparation - Oslund Design will provide vector files at %50 final size.

Process - Proposal for this project will need to include:

1. Site visit and measurement verification
2. Color and material submittals for approval by design team
3. Test sections and site application of 1 to 2 sf
4. Digital proof of art prior to fabrication
5. Coordination with General Contractor and 4J schools to arrange installation schedule
6. Fabrication and installation

If you have any questions contact:

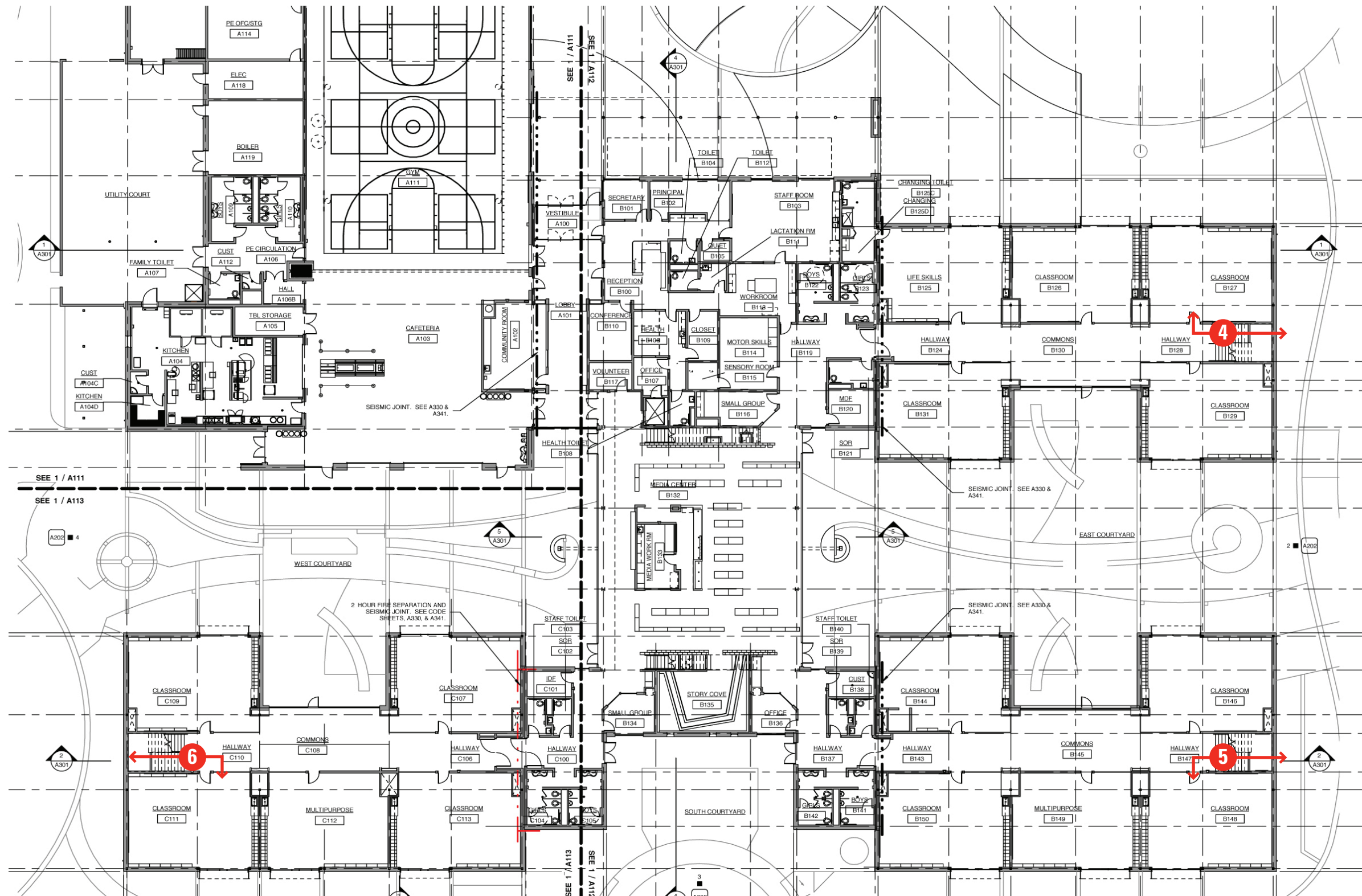
Carl Oslund

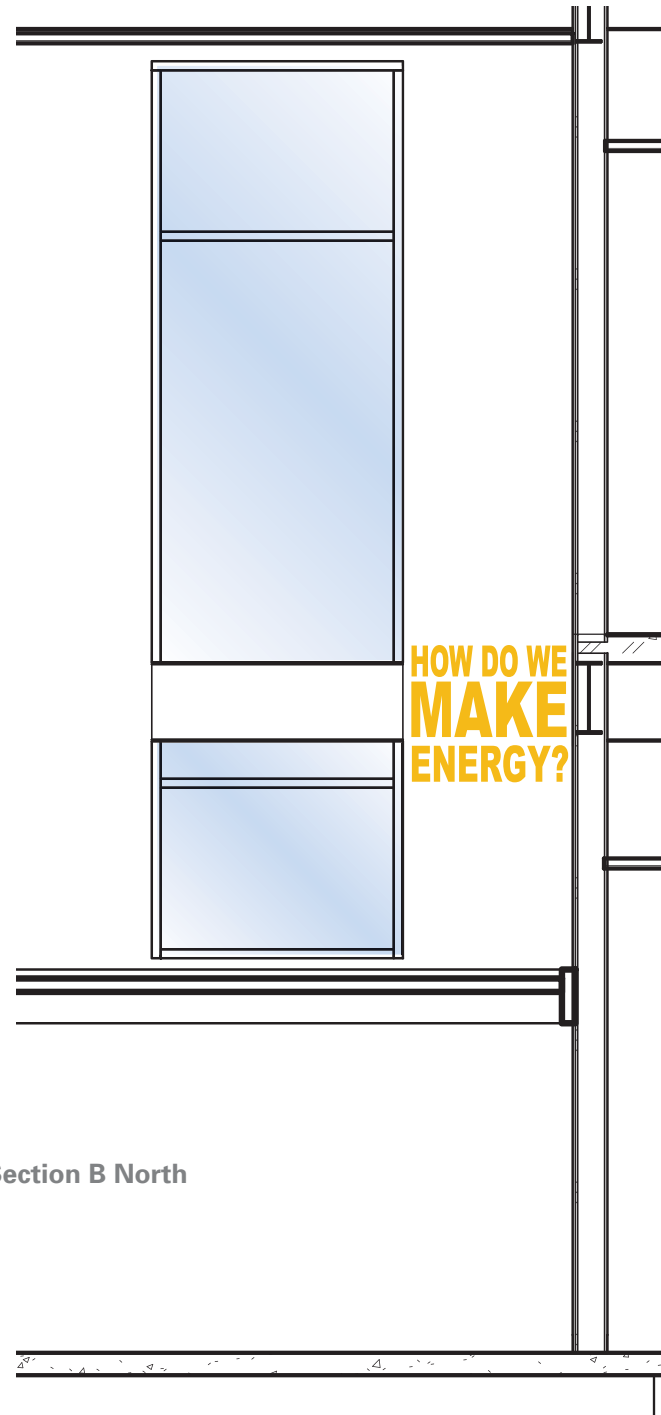
541.686.9833

cjo@oslund.com

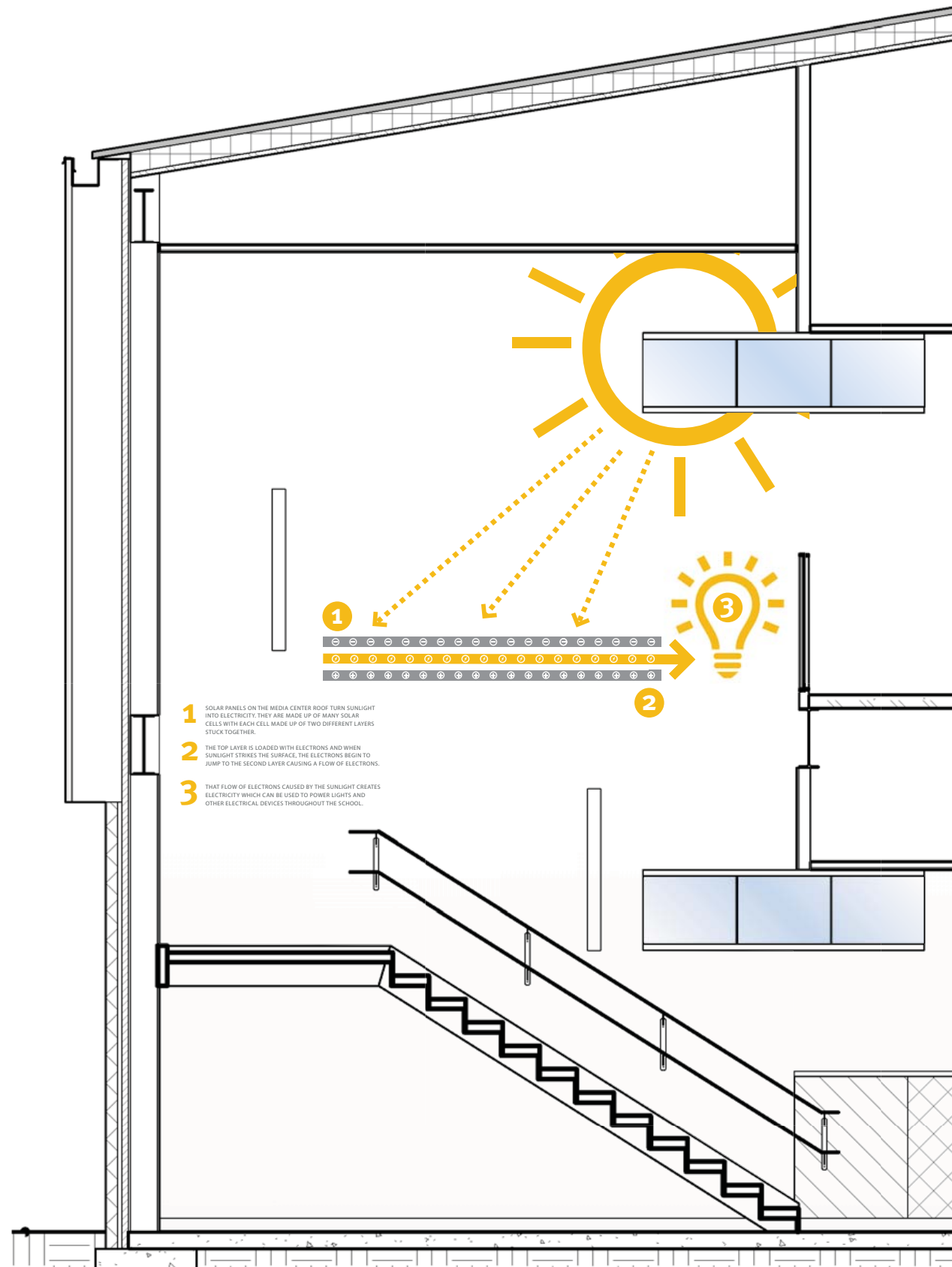
Marketing Communications

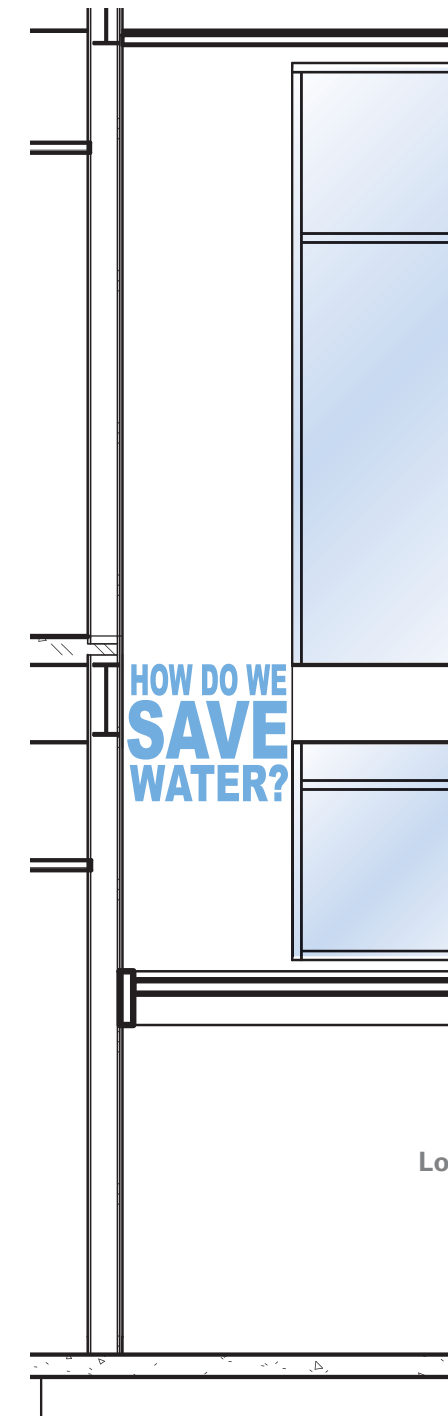
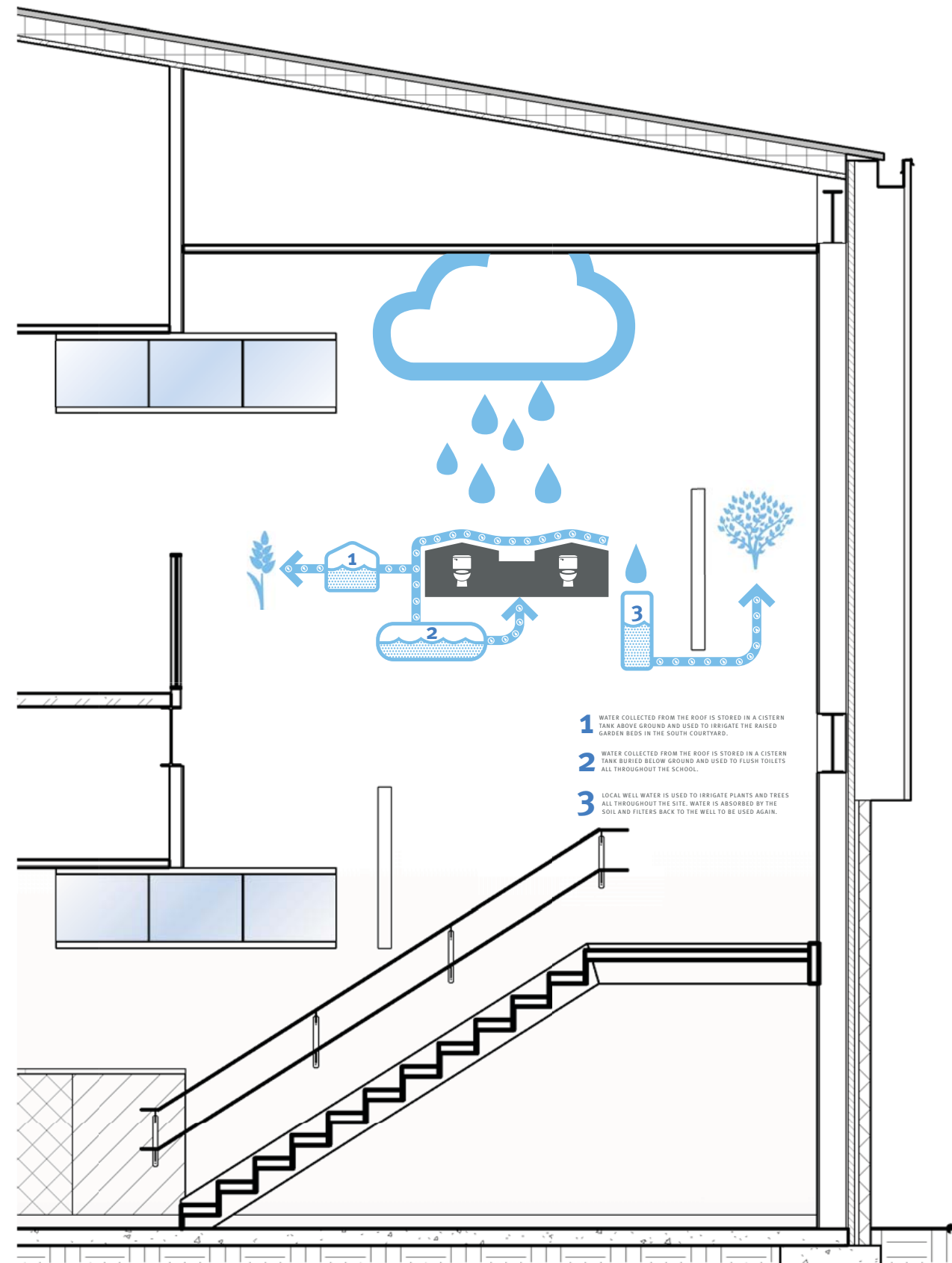
improve your image



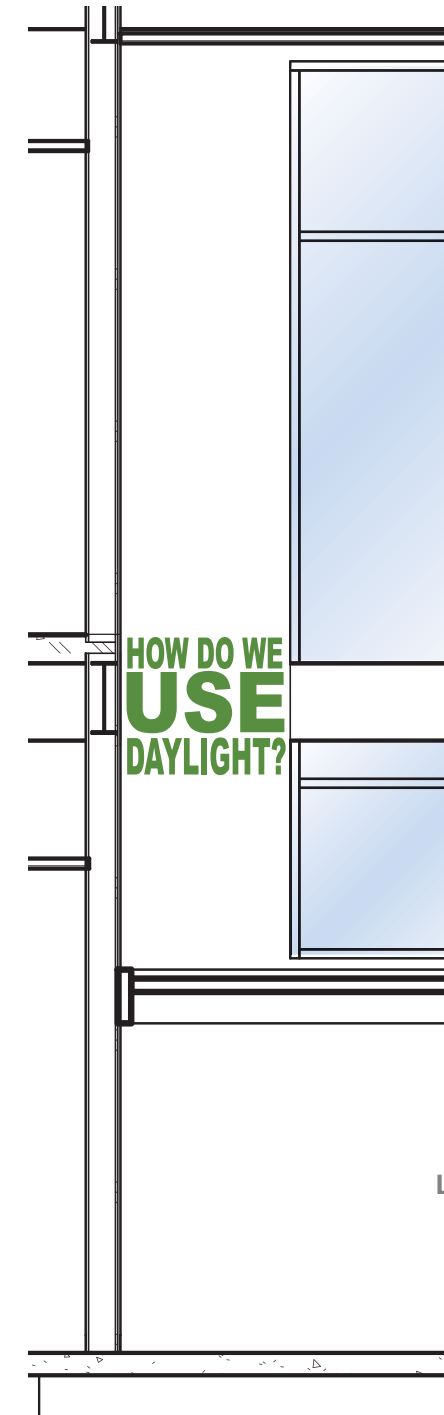
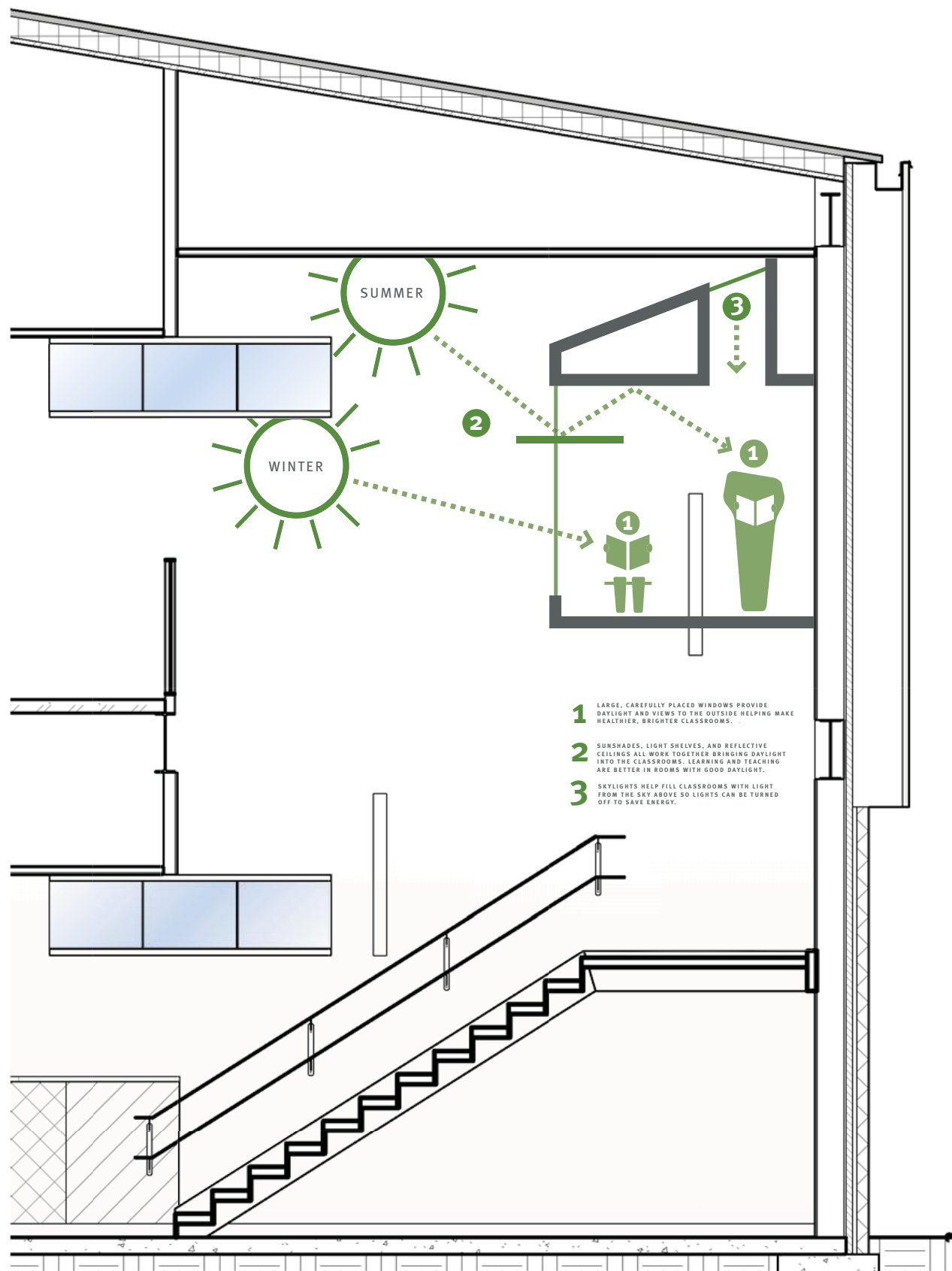


HOW DO WE
MAKE
ENERGY?





Lower Run Section B South



Lower Run Section C South