

if late start, then wait to go over the HW rubric on Day 3.

Textbooks

Period 3 11:40 AM

Period 4 1:20 PM

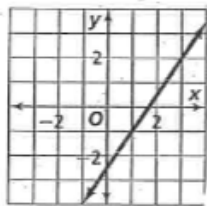
Textbook: be sure to get Alg 2, volume 1

Pick Up the
WARM Up

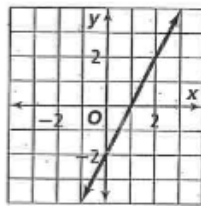
HW Help



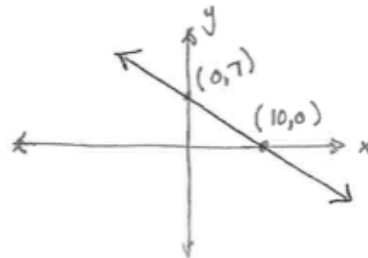
1 Study #1 Slope of a Line on the reference sheet. Then come here and find the slope of the three lines below



$$\frac{\Delta y}{\Delta x} =$$



$$\frac{\Delta y}{\Delta x} =$$



$$\frac{\Delta y}{\Delta x} =$$

2 Now study the example shown below #1 and #2 on the reference sheet. Then come back here and find the slope of the line that passes through:

a) $(20, 12)$ and $(14, 3)$

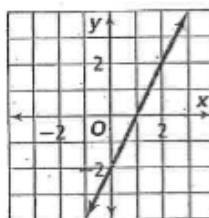
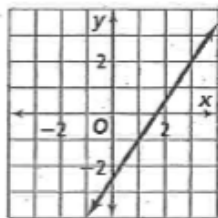
$$m = \frac{-}{-}$$

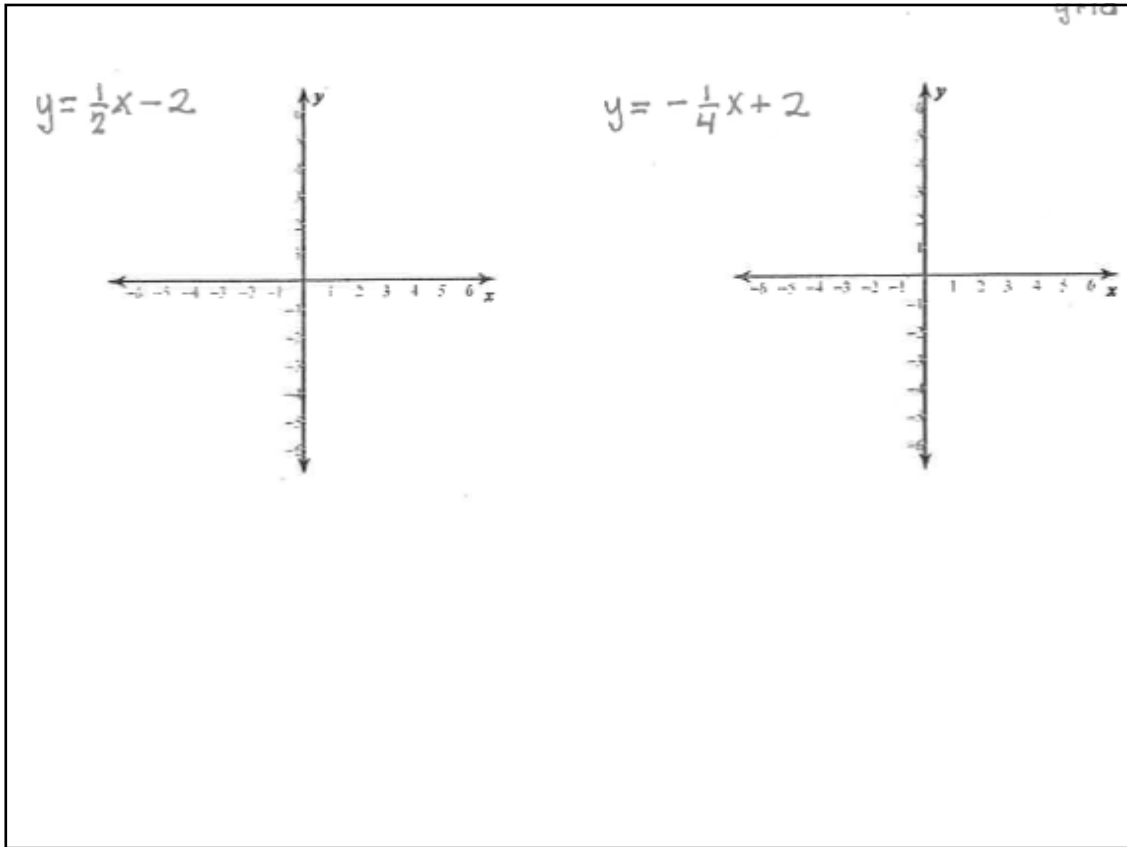
b) $(-4, 2)$ and $(7, 5)$

$$m =$$

Read #2 on the reference sheet. Then come back here and find the equation of the line for each graph below. ↘

in $y = mx + b$
format





5

Solve the following equation by clearing the frac out. To do so multiply both sides of the equation by an expression.

$$\frac{3}{x} = \frac{5}{4}$$

Solve again, but this time cross multiply to solve.

$$\frac{3}{x} = \frac{5}{4}$$

6 Solve the equation below using both methods again

$$\frac{x-5}{4} = \frac{3}{2}$$

$$\frac{x-5}{4} = \frac{3}{2}$$

If absent from my class:

1. Always check my blog for details, etc
2. Always check the **Class Papers** Basket for...
3. Ask for the solutions to the previously scored assignment so you can check your work, etc.

Questions on the HW?

- All assignments due the next day 10
- Can turn in ONE assignment late per day 7
- but don't make that your goal. 😞
- Graded on quality

Use ink of a different color when checking/correcting/editing

Only use ink once class starts

$$\frac{5n}{+5n} = \frac{\cancel{5}n}{+5n}$$

$$\frac{\cancel{5}n}{\cancel{5}n} = \frac{0}{0}$$

$$n = 0$$

$$3 - (w + \frac{2}{5}) = \frac{3}{5} + w$$

$$(5)(3) - 5w - \frac{(2)(5)}{5} = \frac{5(\frac{3}{5})}{5} + 5(w)$$

$$15 - 5w - 2 = 3 + 5w$$

$$13 - 5w = 3 + 5w$$

$$13 = 3 + 10w$$

$$10 = 10w$$

Using a pen of a different color...

Evaluate your HW
using the HW Proficiency Rubric

Correcting vs Checking For Learning

Grading HW from
now on....

Avoid the cycle of destruction.

If you are struggling with the work, don't leave school that day unless you get help or come in early the next day.

2nd Sheet
of
Syllabus

Goal: Create linear functions given various types of information

$$y = mx + b$$

↑ ↑
Slope y-intercept

$$3x + 2 = y + x$$

$$y = 2x + 2$$

↓ ↓
Slope y-int.
2 (0, 2)

Review

Write the equation of a line given a slope and a y-intercept.

Slope $\frac{-2}{15}$

y-int (0, 4)

Generate the equation of a line
in $y=mx+b$ form given two
points

$(0, 4)$ $(2, 3)$

$(10, 20)$ and $(-4, -1)$

BB

Find the slope of the line
given :

$$y + 4 = -7(x - 1)$$

$$\frac{x}{3} - \frac{y}{6} = 1$$

Assignment

Worksheet #2

and work on getting your
Supplies